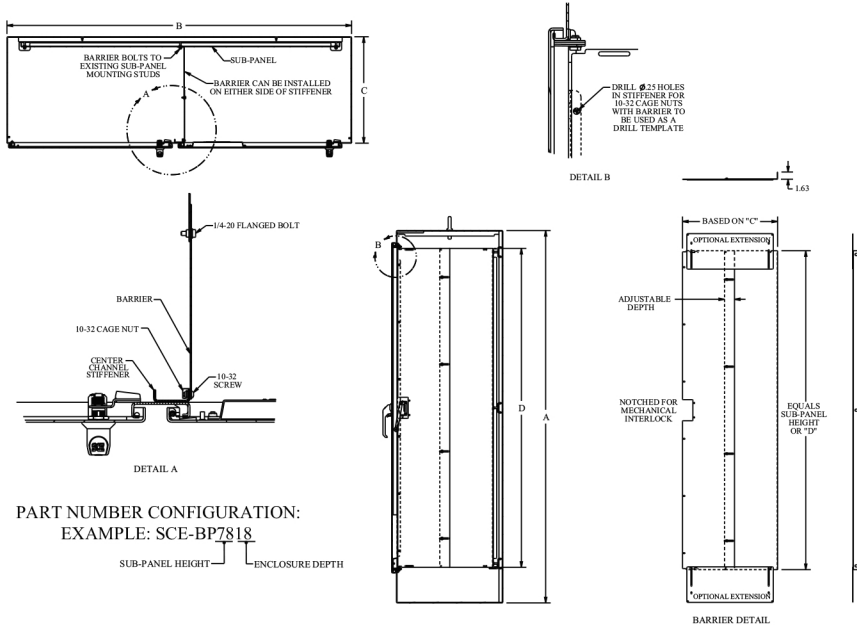


Catalog No.	Height (A)	Width (B)	Use with Subpanel Height	Use with Enclosure Depth	Product Code
SCE-BP5612	55.94	10.44	56	12	P2
SCE-BP5618	55.94	16.44	56	18	P2
SCE-BP5624	55.94	22.44	56	24	P2
SCE-BP6018	59.94	15.44	60	18	P2
SCE-BP6024	59.94	21.44	60	24	P2
SCE-BP6812	67.94	10.44	68	12	P2
SCE-BP6818	67.94	16.44	68	18	P2
SCE-BP6824	67.94	22.44	68	24	P2
SCE-BP7218	71.94	15.44	72	18	P2
SCE-BP7224	71.94	21.44	72	24	P2
SCE-BP7818	77.94	15.44	78	18	P2
SCE-BP7824	77.94	21.44	78	24	P2



PART NUMBER CONFIGURATION:  
EXAMPLE: SCE-BP7818

SUB-PANEL HEIGHT      ENCLOSURE DEPTH

Catalog No.	For Use With	Length	Product Code
SCE-BPEX18	18 Inch Wide Barrier Plates	13.50	P2
SCE-BPEX24	24 Inch Wide Barrier Plates	19.50	P2

# MOUNTING PANELS

## Barrier Plates

Designed to be installed on the back panel of enclosures to provide protection against Arc Flash the height of the sub-plate, and allowing separation of the high voltage and low voltage within the enclosure. Made of heavy gauge carbon steel and powder coated white. Mounting hardware included.

## Barrier Extension for Barrier Plates

Designed to be used with the Barrier Plates to extend the barrier, closing up the space between barrier plate and top or bottom of enclosure. Made of heavy gauge carbon steel and powder coated white.