

MOUNTING PANELS

Swing Out Panel Kits For Type 4 & 12 Enclosures

Designed to allow a standard sub-panel to be installed in the front of an enclosure and to swing out of the enclosure. Kits consist of heavy gauge brackets and hinges. Installed by drilling small hole in the side of the enclosure and bolting the bracket in place. Sealing washers are provided to insure that the enclosure will meet original standards after installation. For use in any Type 4 & 12 LP style wall mount enclosure where A x B dimensions are 12" x 12" or larger.

Provided with UL Recognized sealing washer to maintain Environmental Rating of the enclosure.

Swing Out Panel Kits For Envirolite®, Wall-mount, 3R Hinged Enclosures

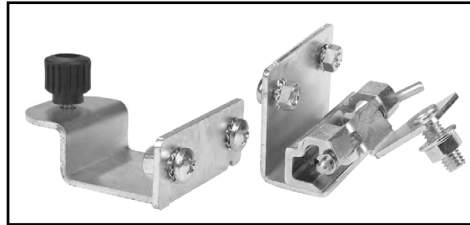
Designed to allow a standard sub-panel to be installed in the front of an enclosure and to swing out of the enclosure. Kit consists of heavy gauge brackets, hinges, and mounting hardware. Installed by detaching door hinge from enclosure and installing swing out panel kit to the existing holes and hinge supplied with the enclosure. Made of steel and zinc plated.

Provided with UL Recognized sealing washer to maintain Environmental Rating of the enclosure.

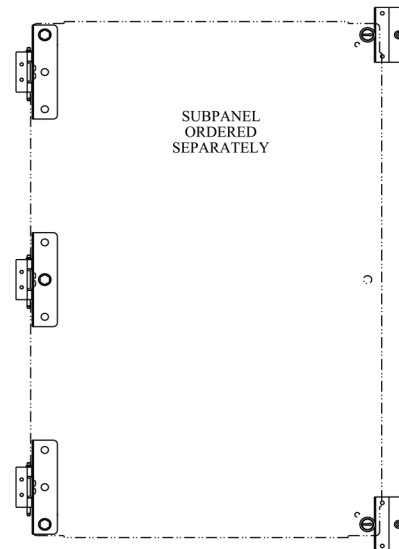
Swing Out Panel Kit For Polycarbonate Enclosures

Designed to allow a standard sub-panel to be installed in the front of an enclosure and to swing out of the enclosure. Kits consist of polycarbonate hinged mounting brackets. Installed on internal enclosure channels and adjustable to depth of enclosure.

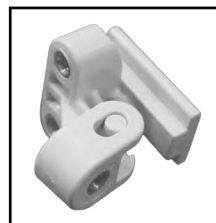
Catalog No.	Description	Product Code
SCE-NADFK	Swing Panel Kit (used with panels 30 inches and under)	P2
SCE-NADFK-3	Swing Panel Kit (used with panels over 30 inches)	P2
SCE-NADFKSS	Swing Panel Kit - Stainless Steel	P2



Catalog No.	Enclosure Height	Product Code
SCE-ELSP	12 to 16	P2
SCE-ELSP3	20 to 60	P2



Catalog No.	Qty Per Kit	Product Code
SCE-PCSP	4	F1



Phone (989) 799-6871
Fax (989) 799-4524

SCE SAGINAW
CONTROL &
ENGINEERING
Your Enclosure Source®