

## GENERAL ACCESSORIES

### Mechanical Interlock

Designed for use with Enviroline® two-door enclosures to interlock the master door to the slave door.

**\*For use on enclosures greater than 30" in height with a center channel.**

### Mechanical Interlock

Designed for use with two-door enclosures with SCE concealed hinges and with both doors hinged on the left to interlock the master door to the slave door.

**\*For use on enclosures greater than 30" in height with a center channel.**

### Electrical Interlock

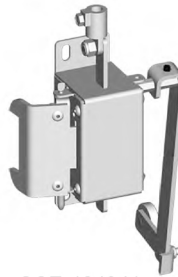
Designed to provide a safety lockout on an enclosure when the circuits are energized. UL recognized. Works with SCE hardware. For installation information, consult our Installation Manual at [www.saginawcontrol.com](http://www.saginawcontrol.com).

### Electrical Interlock Defeater

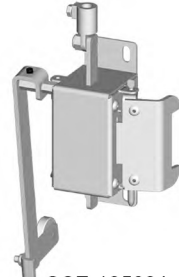
Designed to provide a key operated momentary contact switch with the contacts normally closed. Turning the key disengages the circuit to the electrical interlock, allowing access to the enclosure. May be used with SCE-E1151 Electrical Interlock. 4 amp, 125 vac.

**IS24 - Industry Standards -**  
UL Component Recognized

Catalog No.	Description	Quantity Per Kit	Product Code
SCE-104941	Interlock for Left Door as Main	1	P2
SCE-105604	Interlock for Right Door as Main	1	P2

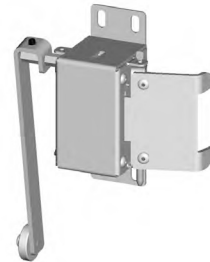


SCE-104941

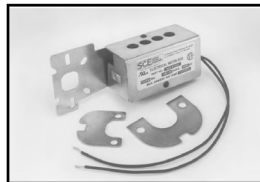


SCE-105604

Catalog No.	Quantity Per Kit	Product Code
SCE-103758	1	P2



Catalog No.	AMPS	Hz	Volt	Product Code
SCE-E1151	.100 / .63	50/60	115	P2



Catalog No.	AMPS	Hz	Volt	Product Code
SCE-EKDF	10	60	120	P2



Phone (989) 799-6871  
Fax (989) 799-4524

**SCE** SAGINAW  
CONTROL &  
ENGINEERING  
Your Enclosure Source®