

Stainless Steel Extra Large 22.5 mm Hinged Pushbutton Enclosures

Application -

Designed to house standard pushbuttons, switches and pilot lights in wet and hosed down areas and in corrosive atmospheres. For installation information, consult our Installation Manual at www.saginawcontrol.com.

Construction -

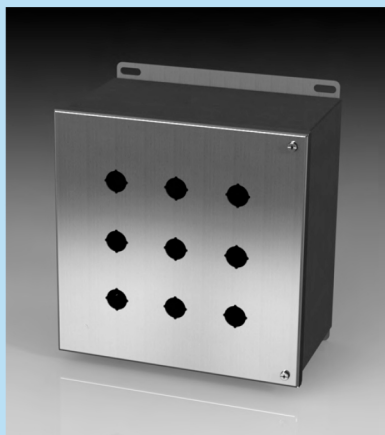
- 0.063" stainless steel Type 304 & 316/316L.
- Seams continuously welded and ground smooth.
- Captivated cover screws thread into sealed wells.
- 4-way pushbutton holes accept all brands of oil-tight pushbuttons, switches and pilot lights. Hole diameter 0.87" (22.5 mm).
- Oil-resistant door gasket.
- Provisions for sub-panel.
- Ground stud on door and body.
- Bolt-on continuous hinge with stainless steel hinge pin.
- Welded mounting provision top and bottom of back.

Finish -

#4 brushed finish on all exterior surfaces. Optional sub-panels powder coated white.

IS5 - Industry Standards -

NEMA Type 4, 4X, 12 & Type 13
UL Listed Type 4, 4X & 12
CSA Type 4, 4X & 12
IEC 60529 IP66

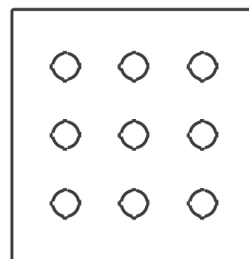


304 STAINLESS STEEL EXTRA LARGE 22.5 mm HINGED PUSHBUTTON ENCLOSURES

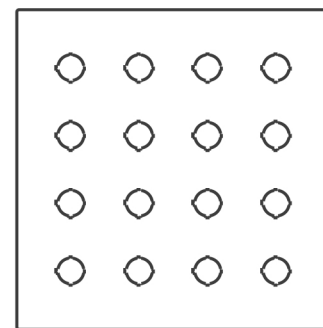
ENCLOSURE PRODUCT CODE S1					SUB-PANEL (P3)		
Catalog No.	Height (A)	Width (B)	Depth (C)	Industry Standard	Catalog No.	Panel Height (E)	Panel Width (F)
SCE-9PBHSSI	10.13	10.00	6.00	IS5	SCE-10P10	9.00	9.00
SCE-16PBHSSI	12.13	12.00	6.00	IS5	SCE-12P12	11.00	11.00

316 STAINLESS STEEL EXTRA LARGE 22.5 mm HINGED PUSHBUTTON ENCLOSURES

ENCLOSURE PRODUCT CODE S1					SUB-PANEL (P3)		
Catalog No.	Height (A)	Width (B)	Depth (C)	Industry Standard	Catalog No.	Panel Height (E)	Panel Width (F)
SCE-9PBHSS6I	10.13	10.00	6.00	IS5	SCE-10P10	9.00	9.00
SCE-16PBHSS6I	12.13	12.00	6.00	IS5	SCE-12P12	11.00	11.00



SCE-9PBHSSI



SCE-16PBHSSI

Phone (989) 799-6871
Fax (989) 799-4524

SCE SAGINAW
CONTROL &
ENGINEERING
Your Enclosure Source®