

Stainless Steel HMI Enclosures & Accessories

Application -

Designed to house Human-Machine Interfaces (HMI) and electrical and electronic controls, instruments and components. Provides a degree of protection from dust, oil and water.

Construction -

- 0.075" stainless steel Type 304.
- Seams continuously welded and ground smooth.
- Reinforced with mounting provisions for suspension or pedestal mounting.
- Concealed hinge access door with provisions for sub-panel.
- Removable front cover for easy installation of cutouts, HMI and components.
- Oil-resistant gasket.
- Black quarter turn latches.
- Latches are opened or closed with a screwdriver.
- Ground studs on door and body.

Finish -

#4 brushed finish on all exterior surfaces. Optional sub-panels powder coated white.

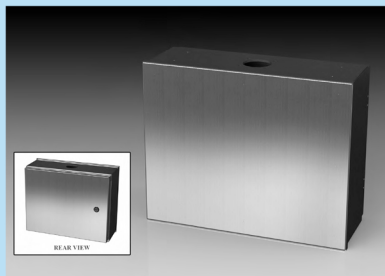
Options -

- Tamper-resistant latches
- Pull handles
- Keyboard shelf

IS6 - Industry Standards -

NEMA Type 3R, 4, 4X, 12 & Type 13
UL Listed Type 3R, 4, 4X & 12
CA Type 4, 4X & 12
IEC 60529 IP66

***Special Instructions apply for IS3, IS4 and IS6 to maintain the environmental rating of Type 3R for these parts. See the Special Instructions on the Industry Standards page in the Technical Information Section.



STAINLESS STEEL HMI ENCLOSURES

ENCLOSURE PRODUCT CODE C2					SUB-PANEL (P3)		
Catalog No.	Height (A)	Width (B)	Depth (C)	Industry Standard	Catalog No.	Panel Height (D)	Panel Width (E)
SCE-12HMI1606SSLP	12.00	16.00	6.00	IS6	SCE-12P10	11.00	9.00
SCE-12HMI1610SSLP	12.00	16.00	10.00	IS6	SCE-12P10	11.00	9.00
SCE-14HMI1806SSLP	14.00	18.00	6.00	IS6	SCE-14P12	13.00	11.00
SCE-14HMI1810SSLP	14.00	18.00	10.00	IS6	SCE-14P12	13.00	11.00
SCE-16HMI2006SSLP	16.00	20.00	6.00	IS6	SCE-16P14	15.00	13.00
SCE-16HMI2010SSLP	16.00	20.00	10.00	IS6	SCE-16P14	15.00	13.00
SCE-20HMI2406SSLP	20.00	24.00	6.00	IS6	SCE-20P18HMI	19.00	17.00
SCE-20HMI2410SSLP	20.00	24.00	10.00	IS6	SCE-20P18HMI	19.00	17.00



Phone (989) 799-6871
Fax (989) 799-4524

SCE SAGINAW
CONTROL &
ENGINEERING
Your Enclosure Source®