

## Stainless Steel ELJ Consolets & Accessories

### Application -

Designed to house electrical and electronic controls, instruments, and components. Provides a degree of protection from dust, dirt, oil and water. Consolets can be mounted on either of two sides to give a control surface inclined 30° or 60°. Can be mounted on desks, machines, or pedestals.

### Construction -

- 0.063" stainless steel Type 304.
- Seams continuously welded and ground smooth.
- Flange trough collar around all sides of door opening.
- Removable hinges.
- Oil-resistant gasket.
- Standoffs provided for mounting optional sub-panels.
- Cable door stops included on SCE-12C\*\*, SCE-16C\*\* & SCE-20C\*\*.
- Black mini quarter turn latches.
- Latches are opened or closed with a screwdriver.
- Ground stud on door and body.
- Mounting holes in back.

### Finish -

#4 brushed finish on all exterior surfaces. Optional sub-panels powder coated white.

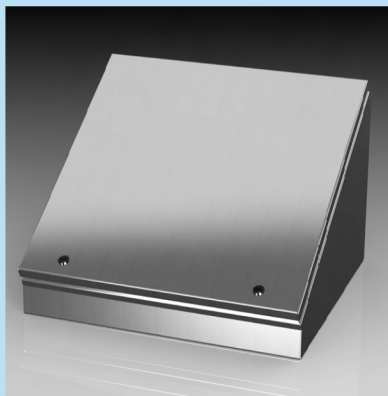
### Options -

Can be special ordered in Type 316/316L stainless steel.

### IS6 - Industry Standards -

NEMA Type 3R, 4, 4X, 12 & Type 13  
UL Listed Type 3R, 4, 4X & 12  
CSA Type 3R, 4, 4X & 12  
IEC 60529 IP66

\*\*\*Special Instructions apply for IS3, IS4 and IS6 to maintain the environmental rating of Type 3R for these parts. See the Special Instructions on the Industry Standards page in the Technical Information Section.



## STAINLESS STEEL ELJ CONSOLETS

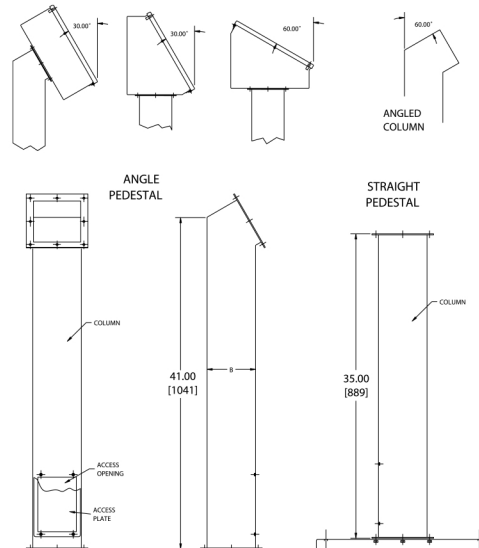
ENCLOSURE PRODUCT CODE S1					SUB-PANEL (P3)		
Catalog No.	Height (A)	Width (B)	Depth (C)	Depth (D)	Catalog No.	Panel Height (E)	Panel Width (F)
SCE-8C8ELJSS	8.00	8.00	7.09	7.44	586.80	SCE-8P8C	6.00 6.75
SCE-8C12ELJSS	8.00	12.00	7.09	7.44	627.16	SCE-8P12C	6.00 10.75
SCE-8C16ELJSS	8.00	16.00	7.09	7.44	708.62	SCE-8P16C	6.00 14.75
SCE-8C20ELJSS	8.00	20.00	7.09	7.44	787.24	SCE-8P20C	6.00 18.75
SCE-12C12ELJSS	12.00	12.00	9.09	10.91	771.99	SCE-12P12C	9.50 10.75
SCE-12C16ELJSS	12.00	16.00	9.09	10.91	796.98	SCE-12P16C	9.50 14.75
SCE-12C20ELJSS	12.00	20.00	9.09	10.91	817.75	SCE-12P20C	9.50 18.75
SCE-12C24ELJSS	12.00	24.00	9.09	10.91	888.79	SCE-12P24C	9.50 22.75
SCE-16C16ELJSS	16.00	16.00	11.09	14.38	817.75	SCE-16P14	15.00 13.00
SCE-16C20ELJSS	16.00	20.00	11.09	14.38	888.79	SCE-16P20C	12.88 18.75
SCE-16C24ELJSS	16.00	24.00	11.09	14.38	957.18	SCE-16P24C	12.88 22.75
SCE-20C20ELJSS	20.00	20.00	13.09	17.84	957.18	SCE-20P20C	16.38 18.75
SCE-20C24ELJSS	20.00	24.00	13.09	17.84	1,100.25	SCE-20P24C	16.38 22.75
SCE-20C30ELJSS	20.00	30.00	13.09	17.84	1,320.04	SCE-20P30C	16.38 28.75

## CABLE DOOR STOP

Catalog No.	Description	For use on	Product Code
SCE-CBL15	15 Inch 135° Door Stop	SCE-12C** & SCE-16C*	P2
SCE-CBL20	20 Inch 135° Door Stop	SCE-20C**	P2

## ACCESSORY COLUMNS AND BASES

Catalog No.	Description	Size	Product Code
SCE-18SBASESS	Stainless Steel Pedestal Base	18.00 x 18.00 x 1.00	P2
SCE-24SBASESS	Stainless Steel Pedestal Base	24.00 x 24.00 x 1.00	P2
SCE-44CCOLSS	Stainless Steel Straight Column	4.00 x 4.00	P2
SCE-44PBCOLSS	Stainless Steel Angled Column	4.00 x 4.00	P2
SCE-66CCOLSS	Stainless Steel Straight Column	6.00 x 6.00	P2
SCE-66PBCOLSS	Stainless Steel Angled Column	6.00 x 6.00	P2



1 Operator System Enclosures  
 2 Wall-Mount Enclosures  
 3 Free-Standing & Floor-Mounted Enclosures  
 4 Modular Enclosures  
 5 Operator System Enclosures (Stainless Steel)  
 6 Wall-Mount Enclosures (Stainless Steel)  
 7 Free-Standing & Floor-Mounted Enclosures (Stainless Steel)  
 8 Non-Metallic Enclosures  
 9 Accessories  
 10 Technical Information  
 11 Index