

IMS (Industrial Modular System) ACCESSORIES

Galvanized Filler Plates

Designed to provide additional mounting surface between sub-panels or sections of a modular enclosure. Slotted mounting holes allow flexible installation.

Sub-Panel Mounting Strap

Designed to provide additional mounting to the center of sub-panels on the right and left sides of a modular enclosure. Made of galvanized material.

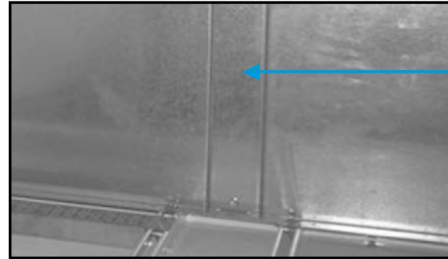
U-Shape Rack Angles

Designed for use in IMS enclosure to provide provisions for the installation of rack mounted equipment and allow position at the desired rack mounting width and depth. Made of galvanized material and powder coated white.

L-Shape Rack Angles

Designed for use in IMS enclosure to provide provisions for the installation of rack mounted equipment and allow position at the desired rack mounting width and depth. Made of galvanized material and powder coated white.

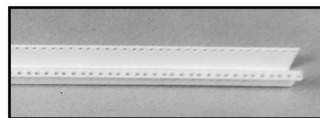
Catalog No.	Height (A)	Ref. mm Height (A)	Width (B)	Ref. mm Width (B)	Used With Enclosure Ref. mm Height	Product Code
SCE-FP18G	66.44	1687.50	3.88	98.50	1800	P5
SCE-FP20G	74.31	1887.50	3.88	98.50	2000	P5



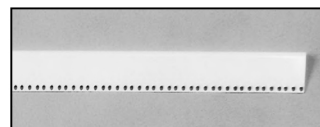
Catalog No.	Length (C)	Ref. mm Length (C)	Used With Enclosure Ref. mm Depth	Parts Per Kit	Product Code
SCE-SPMP05	16.75	425.45	500	2	P5
SCE-SPMP06	20.75	527.05	600	2	P5



Catalog No.	Height (A)	Ref. mm Height (A)	Used With Enclosure Ref. mm Height	Quantity Per Kit	Product Code
SCE-URA18	66.94	1689	1800	2	P5
SCE-URA20	74.94	1867	2000	2	P5



Catalog No.	Height (A)	Ref. mm Height (A)	Used With Enclosure Ref. mm Height	Quantity Per Kit	Product Code
SCE-LRA18	66.50	1689	1800	2	P5
SCE-LRA20	75.00	1867	2000	2	P5



Phone (989) 799-6871
Fax (989) 799-4524

SCE SAGINAW
CONTROL &
ENGINEERING
Your Enclosure Source®