

RIGID • IMC

Split Couplings for Threaded Rigid Conduit • IMC Malleable Iron



Features

- Use where conduit runs are closely spaced
- Use when conduit is tight against a wall, ceiling or other obstruction
- Neoprene gasket provides a concrete tight seal
- Concrete tight
- RoHS compliant

Standard Materials

Malleable iron

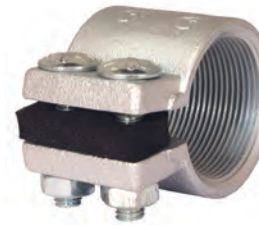
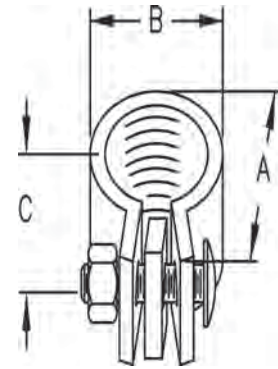
Standard Finish

Zinc plated

Applicable Third Party Standards

- UL Standard: 514B
- NEMA: FB-1
- UL Listed File # E207875

1/2" and 3/4" furnished with one bolt
1" through 6" furnished with two bolts



CATALOG NUMBER	TRADE SIZE	DIM A	DIM B	DIM C	INNER PACK	MASTER PACK	WEIGHT PER C
STC50KON	1/2"	2.000	1.250	1.250	10	100	34.4
STC75KON	3/4"	2.313	1.250	1.500	10	100	39.4
STC100KON	1"	2.625	1.625	1.813	10	40	60.0
STC125KON	1-1/4"	3.063	1.625	2.188	5	20	75.0
STC150KON	1-1/2"	3.313	1.938	2.438	5	20	112.5
STC200KON	2"	3.813	2.000	2.875	5	20	112.5
STC250KON	2-1/2"	4.625	3.063	3.563	2	20	275.0
STC300KON	3"	5.313	3.313	4.125	2	20	300.0
STC350KON	3-1/2"	6.063	3.250	4.813	1	5	425.0
STC400KON	4"	6.563	3.438	5.375	1	5	500.0
STC500KON	5"	8.063	3.875	6.563	–	1	900.0
STC600KON	6"	9.250	4.813	7.625	–	1	1300.0