

RIGID • IMC**Reducing Bushings for Threaded Rigid Conduit • IMC****Features**

- RB1 thru RB13 - NPSM internal and external threads
- RB14 thru RB31 - NPT internal and external threads

Standard Materials

RB1 thru 13 - Steel

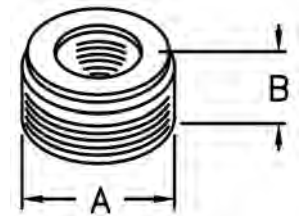
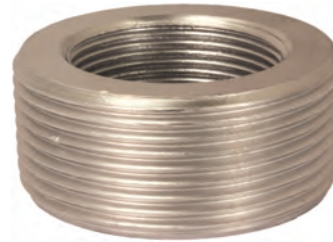
RB14 thru 31 - Malleable iron

Standard Finish

Zinc plated

Applicable Third Party Standards

- UL Standard: 514B
- Fed. Spec. W-F-408E
- NEMA: FB-1
- UL Listed File # E207875



CATALOG NUMBER	TRADE SIZE	DIM A	DIM B	MASTER PACK	WEIGHT PER C
RB1KON	3/4" x 1/2"	1.000	0.563	200	4.4
RB2KON	1" x 1/2"	1.313	0.625	100	13.1
RB3KON	1" x 3/4"	1.313	0.625	100	7.5
RB4KON	1-1/4" x 1/2"	1.625	0.750	50	28.8
RB5KON	1-1/4" x 3/4"	1.625	0.750	50	21.9
RB6KON	1-1/4" x 1"	1.625	0.750	50	14.4
RB7KON	1-1/2" x 1/2"	1.875	0.750	50	40.6
RB8KON	1-1/2" x 3/4"	1.875	0.750	50	34.4
RB9KON	1-1/2" x 1"	1.875	0.750	50	25.8
RB10KON	1-1/2" x 1-1/4"	1.875	0.750	50	11.5
RB11KON	2" x 1"	2.313	0.875	25	66.3
RB12KON	2" x 1-1/4"	2.313	0.875	25	48.8
RB13KON	2" x 1-1/2"	2.313	0.875	25	33.8
RB14KON	2-1/2" x 1"	2.875	1.313	10	126.3
RB15KON	2-1/2" x 1-1/4"	2.875	1.313	10	127.5
RB16KON	2-1/2" x 1-1/2"	2.875	1.313	10	106.2
RB17KON	2-1/2" x 2"	2.875	1.313	10	68.8
RB18KON	3" x 1"	3.438	1.313	10	190.6
RB19KON	3" x 1-1/4"	3.438	0.131	10	190.6
RB20KON	3" x 1-1/2"	3.438	1.313	10	162.5
RB21KON	3" x 2"	3.438	1.313	10	146.9
RB22KON	3" x 2-1/2"	3.438	1.563	10	116.9
RB23KON	3-1/2" x 2"	4.000	1.500	5	240.0
RB24KON	3-1/2" x 2-1/2"	4.000	1.563	5	234.4
RB25KON	3-1/2" x 3"	4.000	1.625	5	112.5
RB26KON	4" x 2"	4.438	1.500	5	303.8
RB27KON	4" x 2-1/2"	4.438	1.500	5	350.0
RB28KON	4" x 3"	4.438	1.563	5	237.5
RB29KON	4" x 3-1/2"	4.438	1.750	5	138.8
RB30KON	5" x 4"	5.500	1.750	5	375.0
RB31KON	6" x 5"	6.563	1.750	5	462.5