

Hex End L-Wrenches

- ProGuard™ Finish -

L-Wrenches

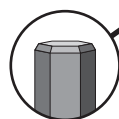
- Chamfered tool tips eliminate burrs and help tools seat in screw head
- Sharp corners transfer more torque to the screw and reduce stripping
- Precision machined for ease of use and superior fit

ProGuard™ finish delivers superior corrosion protection



Yellow=Inch

Red=Metric



Hex End Tips

Long

Short

Sets	PART#	MODEL#	PCS	LENGTH	CONTENTS	QTY	LIST
Inch	12145	HLX7	7	Long	5/64, 3/32, 7/64, 1/8, 9/64, 5/32, 3/16"	1	
	12132	HLX8	8	Long	.050, 1/16, 5/64, 3/32, 7/64, 1/8, 9/64, 5/32"	1	
	12138	HLX10	10	Long	1/16, 5/64, 3/32, 7/64, 1/8, 9/64, 5/32, 3/16, 7/32, 1/4"	1	
	12136	HLX12	12	Long	.050, 1/16, 5/64, 3/32, 7/64, 1/8, 9/64, 5/32, 3/16, 7/32, 1/4, 5/16"	1	
	12137	HLX13	13	Long	.050, 1/16, 5/64, 3/32, 7/64, 1/8, 9/64, 5/32, 3/16, 7/32, 1/4, 5/16, 3/8"	1	
	12245	HLX7S	7	Short	5/64, 3/32, 7/64, 1/8, 9/64, 5/32, 3/16"	1	
	12232	HLX8S	8	Short	.050, 1/16, 5/64, 3/32, 7/64, 1/8, 9/64, 5/32"	1	
	12238	HLX10S	10	Short	1/16, 5/64, 3/32, 7/64, 1/8, 9/64, 5/32, 3/16, 7/32, 1/4"	1	
	12236	HLX12S	12	Short	.050, 1/16, 5/64, 3/32, 7/64, 1/8, 9/64, 5/32, 3/16, 7/32, 1/4, 5/16"	1	
	12237	HLX13S	13	Short	.050, 1/16, 5/64, 3/32, 7/64, 1/8, 9/64, 5/32, 3/16, 7/32, 1/4, 5/16, 3/8"	1	

In Metal Box

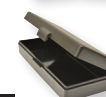
Sets	PART#	MODEL#	PCS	LENGTH	CONTENTS	QTY	LIST
Inch	12344	MHLX15S	15	Short	.028, .035, .050, 1/16, 5/64, 3/32, 7/64, 1/8, 9/64, 5/32, 3/16, 7/32, 1/4, 5/16, 3/8"	1	
	12339	MHLX18S	18	Short	.028, .035, .050, 1/16, 5/64, 3/32, 7/64, 1/8, 9/64, 5/32, 3/16, 7/32, 1/4, 5/16, 3/8, 1/2, 9/16, 5/8"	1	



12344

In Plastic Box

Sets	PART#	MODEL#	PCS	LENGTH	CONTENTS	QTY	LIST
Inch	12342	MHLX13	13	Long	1/16, 5/64, 3/32, 7/64, 1/8, 9/64, 5/32, 3/16, 7/32, 1/4, 5/16, 3/8, 1/2"	1	



12342

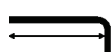
In Pouch

Sets	PART#	MODEL#	PCS	LENGTH	CONTENTS	QTY	LIST
Inch	12335	PHLX9	9	Long	5/64, 3/32, 1/8, 5/32, 3/16, 7/32, 1/4, 5/16, 3/8"	1	
	12333	PHLX11	11	Long	.050, 1/16, 5/64, 3/32, 1/8, 5/32, 3/16, 7/32, 1/4, 5/16, 3/8"	1	
	12351	PHLX15	15	Long	5/64, 3/32, 7/64, 1/8, 9/64, 5/32, 3/16, 7/32, 1/4, 5/16, 3/8, 1/2, 9/16, 5/8, 3/4"	1	
	12345	PHLX7S	7	Short	5/64, 3/32, 1/8, 5/32, 3/16, 7/32, 1/4"	1	
	12338	PHLX10S	10	Short	.035, .050, 1/16, 5/64, 3/32, 1/8, 5/32, 3/16, 7/32, 1/4 "	1	
	12341	PHLX11SS	11	Short	.050, 1/16, 5/64, 3/32, 1/8, 5/32, 3/16, 7/32, 1/4, 5/16, 3/8"	1	
	12343	PHLX11S	11	Short	5/64, 3/32, 1/8, 5/32, 3/16, 7/32, 1/4, 5/16, 3/8, 1/2, 9/16"	1	
	12347	PHLX15S	15	Short	.028, .035, .050, 1/16, 5/64, 3/32, 7/64, 1/8, 9/64, 5/32, 3/16, 7/32, 1/4, 5/16, 3/8"	1	
	22789	PHLX9-6	9	6" Long Arm	5/64, 3/32, 1/8, 5/32, 3/16, 7/32, 1/4, 5/16, 3/8"	1	
	25445	PHLX7-12	7	12" Long Arm	5/64, 3/32, 1/8, 5/32, 3/16, 7/32, 1/4"	1	



12347

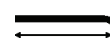
SINGLE PACKAGING



PACKAGED

Singles	SIZE	INCH	MM	INCH	MM	PART#	QTY	LIST EA
6" LONG ARM Inch	5/64	5.9	150	0.61	15	22704	5	
	3/32	5.9	150	0.65	16	22705	5	
	7/64	5.9	150	0.70	18	22706	5	
	1/8	5.9	149	0.75	19	22707	5	
	9/64	5.9	149	0.80	20	22708	5	
	5/32	5.8	148	0.84	21	22709	5	
	3/16	5.8	148	0.94	24	22710	5	
	7/32	5.8	147	1.03	26	22711	5	
	1/4	5.8	146	1.13	29	22712	5	
	5/16	5.7	144	1.25	32	22713	5	
	3/8	5.6	143	1.38	35	22714	5	

SINGLE PACKAGING



PACKAGED

Singles	SIZE	INCH	MM	INCH	MM	PART#	QTY	LIST EA
12" LONG ARM Inch	5/64	11.9	303	0.61	15	25404	5	
	3/32	11.9	302	0.65	16	25405	5	
	7/64	11.9	302	0.70	18	25406	5	
	1/8	11.9	302	0.75	19	25407	5	
	9/64	11.9	301	0.80	20	25408	5	
	5/32	11.8	301	0.84	21	25409	5	
	3/16	11.8	300	0.94	24	25410	5	
	7/32	11.8	299	1.03	26	25411	5	
	1/4	11.8	298	1.13	29	25412	5	

For more individual sizes available packaged, in bulk, or singles see page 13