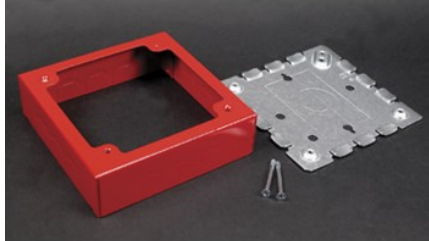

500/700 TWO-GANG ALARM DEVICE BOX FITTING

5752 | [Wiremold](#)



FEATURES & BENEFITS

For surface mounting of alarm devices and safety signals designed to fit into 4" (102mm) square back boxes. Cover has three raceway twistouts on each side. Base has 1/2" and 1" concentric and single-gang box KOs. Available in red and ivory finishes. Accepts NEMA double-gang standard faceplates.



PRODUCT
ENVIRONMENTAL PROFILE

- This product meets the material restrictions of RoHS

SPECIFICATIONS

GENERAL INFO

Available Colors:

V5752 - Ivory

5752R - Red

Product Series: 500, 700

Component Type: Boxes

LISTING AGENCIES/THIRD PARTY CERTIFICATIONS

RoHS: Yes

TECHNICAL INFORMATION

Material: Steel

Capacity: Single-Channel