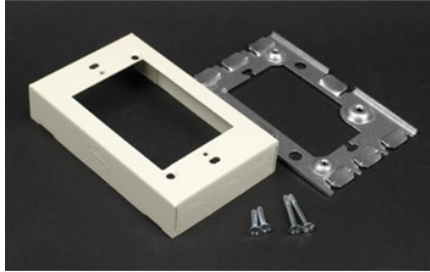

500/700 SINGLE-GANG FLUSH TYPE EXTENSION ADAPTER FITTING

5751 | [Wiremold](#)



FEATURES & BENEFITS

For extensions from existing flush switch and receptacle boxes. Larger gang boxes available by special order.
Single-gang: 4 5/8" L x 2 7/8" W (117mm x 73mm).



PRODUCT
ENVIRONMENTAL PROFILE

- This product meets the material restrictions of RoHS

SPECIFICATIONS

GENERAL INFO

Available Colors:

V5751 - Ivory

5751WH - White

Product Series: 500, 700

Component Type: Brackets & Plates

LISTING AGENCIES/THIRD PARTY CERTIFICATIONS

RoHS: Yes

TECHNICAL INFORMATION

Material: Steel

Capacity: Single-Channel