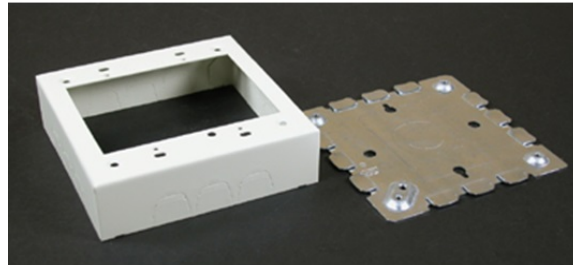


500/700 Two-Gang Switch & Receptacle Box Fitting

V5748-2, 5748-2WH, VC5748-2,
5748-2WHC



features & benefits

For deep switches and receptacles. Base has two 1/2" trade size KOs. Larger gang boxes available by special order. Two-gang: 4 3/4" L x 4 3/4" W [121mm x 121mm]. Accepts NEMA double-gang standard faceplates. NOTE: Certified to Canadian Safety Standards for sale in Canada. When ordering these products, change the "V" color prefix to "VC" or the "WH" color suffix to "WHC" to denote the Canadian versions.

specifications

General Info

Available Colors:

V5748-2 - Ivory

5748-2WH - White

Product Series: 500, 700

Component Type: Boxes

Technical Information

Material: Steel

Capacity: Single-Channel