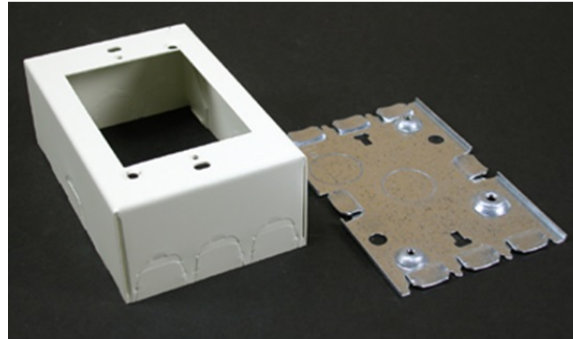


## 500/700 Combination Switch & Receptacle Box Fitting

V5745, 5745WH, VC5745,  
5745WHC



Connects to surface runs of 1/2" trade size conduit. Cover has 1/2" trade size KOs and two raceway twistouts on one end and three raceway twistouts on opposite end, two 1/2" KOs and a raceway twistout on each side. Base has two 1/2" trade size KOs. Larger gang boxes are available by special order. Accepts NEMA single-gang standard faceplates. NOTE: Certified to Canadian Safety Standards for sale in Canada. When ordering these products, change the "V" color prefix to "vc" or the "WH" color suffix to "WHC" to denote the Canadian versions.

### features & benefits

### specifications

**General Info**

Available Colors:

V5745- Ivory  
5745WH - White

Product Series: 500, 700  
Component Type: Boxes

**Technical Information**

Material: Steel  
Capacity: Single-Channel