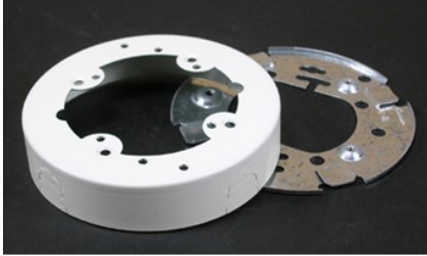

500/700 OPEN BASE EXTENSION BOX FITTING

5737 | [Wiremold](#)



FEATURES & BENEFITS

Mounts onto 3 1/4" or 4" (83mm or 102mm) conduit boxes, or other recessed outlets. Cover accepts devices with mounting screw centers of 2 3/4", 3 1/2", or 4 1/16" (70mm, 89mm, or 103mm). Can be used with 5736 Blank Cover as a pull or junction box. Outside diameter 4 3/4" (121mm).



SPECIFICATIONS

GENERAL INFO

Available Colors:

V5737 - Ivory

5737WH - White

Product Series: 500, 700

Component Type: Boxes

TECHNICAL INFORMATION

Material: Steel

Capacity: Single-Channel