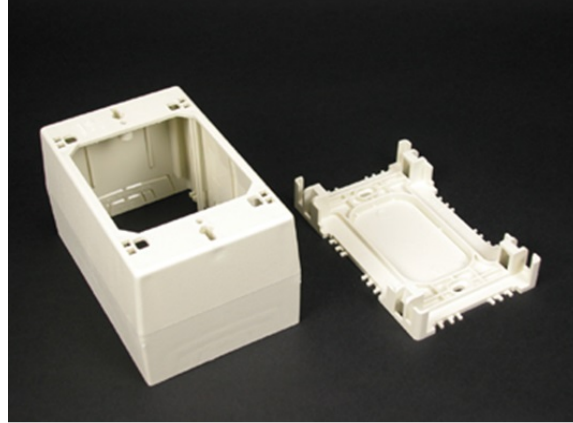


# 400/800 /2300/2300D One-Gang Extra Deep Device Box Fitting

2344, 2344-WH



One-gang. Base has rectangular KO. Accepts industry standard faceplates for switch and communication devices. NOTE: All boxes have combination twistouts for 400BAC, 800BAC, and 2300BAC on all four sides.

## features & benefits

## specifications

### General Info

Available Colors:

2344 - Ivory

2344-WH - White

Product Series: 400, 800, 2300

Component Type: Boxes

### Technical Information

Material: Nonmetallic

Capacity: Single-Channel