

## Machine Tube Luminaire



**RL70CE - 124**

connected load  
fitted with

work equipment  
mains lead  
luminaire body  
material  
weight (net)  
fastening  
light distribution  
system of protection  
class of protection

total length  
light output  
outside diameter  
article no.

24 V; DC

1 x compact fluorescent lamp TC-L 24 W  
neutral white 4000 K

electronic ballast  
connecting terminal

borosilicate glass  
approx. 2,3 kg (5.1 lbs)  
lamp bracket (accessory)

direct

IP 67

I

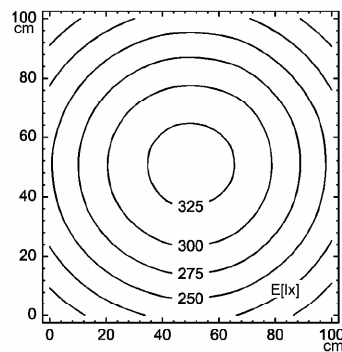
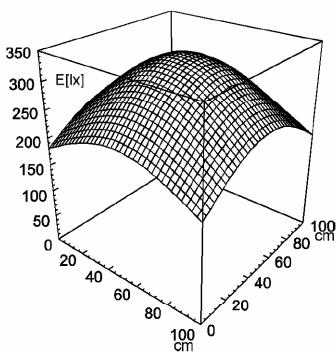
600 mm (23.6")

317 mm (12.5")

70 mm (2.8")

111440012

E<sub>min</sub>: 178 lx  
E<sub>m</sub>: 259 lx  
E<sub>max</sub>: 333 lx



measuring conditions: d=100cm

