



GENERAL DUTY  
QPC-7280-DP



ALL WEATHER  
QPC-7280-UP

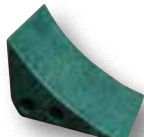


HEAVY DUTY  
QPC-7280-VP

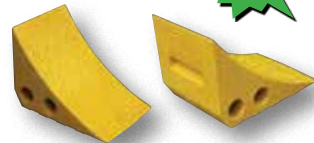
## Quilted Moving Pads

Cushion and protect furniture, machinery, and electronic equipment. Each pad measures 72" wide by 80" long. Model QPC-7280-UP is water and mildew resistant. Units are sold in quantities of 12 and the weights below reflect a dozen units.

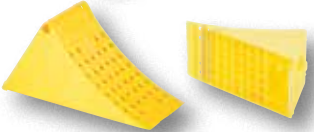
MODEL NUMBER	DESCRIPTION	QUANTITY	NET WT. (POUND)
QPC-7280-DP	GENERAL DUTY (both sides cotton)	12	57
QPC-7280-UP	ALL WEATHER (both sides polyester)	12	63
QPC-7280-UP-4PK	ALL WEATHER (both sides polyester)	4	30
QPC-7280-VP	HEAVY-DUTY (one side polyester/other side cotton)	12	82



model PWC-G



model PWC-Y



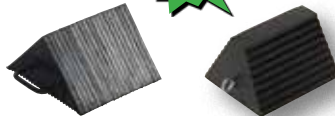
model PLWC-Y



A) LWC-15



B) LWC-14



C) LWC-14M



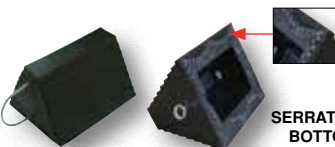
D) RWC-8



E) RWC-8-HDL



F) ORWC-8-HDL



G) RWC-9-U



H) RWC-8-SBS

SERRATED  
BOTTOM



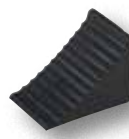
I) RWC-25



J) RWC-10-HDL



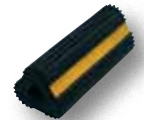
K) RWC-5



L) RWC-11



M) RMC-4



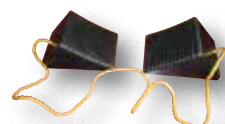
N) EX-4



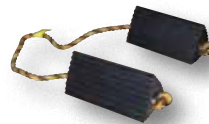
O) EX-11



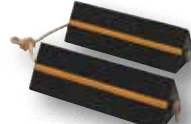
P) EX-13



Q) RWC-2-PR



R) AC-13



S) AC-18



## Plastic Wheel Chocks

These plastic wheel chocks are durable yet light enough to take along when you travel. Series *PWC*, is made of 100% recycled plastic. Resistant to damage from sunlight, oil, salt, and chemicals. Features a molded-in handle.

Model *PLWC-Y*, features a molded-in handle. Bottom surface includes three (3) steel cleats for extra traction.

MODEL NUMBER	DESCRIPTION	DIMENSIONS (W x H x D)	COLOR	NET WT. (POUND)
PWC-G	RECYCLED PLASTIC	7½" x 7½" x 10¼"	GREEN	7
PWC-Y	RECYCLED PLASTIC	7½" x 7½" x 10¼"	YELLOW	6
PLWC-Y	MOLDED PLASTIC	7¼" x 9" x 18½"	YELLOW	6

## Rubber Wheel Chocks

Constructed of reinforced rubber to provide a sure grip on virtually any surface. Curved surface contours to fit tires. Rubber resists tearing, abrasion, ozone weathering, etc. Functional design is durable in all weather conditions. Series *RWC-8* is constructed of a mix of virgin and recycled, no reinforcement cords.

The Airline Chocks are suitable for small and large aircraft. Model *AC-13* includes a 36" long polypropylene rope, while model *AC-18* has a 14" long polypropylene rope between the chocks.

TYPE	MODEL NUMBER	DESCRIPTION	DIMENSIONS (W x H x D)	NET WT. (POUND)
A	LWC-15	LAMINATED RUBBER	8" x 8" x 8"	13
B	LWC-14	LAMINATED RUBBER	10" x 5½" x 10"	17
C	LWC-14M	LAMINATED RUBBER (RUBBER GRIPS)	10" x 5½" x 10"	19
D	RWC-8	MOLDED RUBBER (EYEBOLT)	9¼" x 6" x 8"	11
E	RWC-8-HDL	MOLDED RUBBER (HANDLE)	9¼" x 6" x 8"	12
F	ORWC-8-HDL	MOLDED RUBBER (ORANGE)	9¼" x 6" x 8"	11
G	RWC-9-U	MOLDED RUBBER ("U" HANDLE)	9¼" x 6" x 8"	11
H	RWC-8-SBS	MOLDED RUBBER (SERRATED BOTTOM)	9¼" x 6" x 8"	10
I	RWC-25	MOLDED RUBBER (JUMBO)	16" x 8" x 12"	25
J	RWC-10-HDL	MOLDED RUBBER (POSITIONING HANDLE)	8" x 5" x 10"	12
K	RWC-5	MOLDED RUBBER (MOLDED HANDLE)	6" x 4" x 8"	5
L	RWC-11	MOLDED RUBBER (WHC-MR)	7" x 7¾" x 10"	11
M	RMC-4	EXTRUDED RUBBER	6½" x 4¾" x 4¼"	5
N	EX-4	EXTRUDED RUBBER	10" x 3¾" x 4½"	5
O	EX-11	EXTRUDED RUBBER	8½" x 6" x 8½"	14
P	EX-13	EXTRUDED RUBBER	12" x 5¾" x 6½"	18
Q	RWC-2-PR	RUBBER W/ROPE CONNECTED	5" x 4" x 8"	10
R	AC-13	AIRLINE CHOCK WITH ROPE	10" x 4½" x 5"	12
S	AC-18	AIRLINE CHOCK WITH ROPE	18" x 5½" x 6"	36