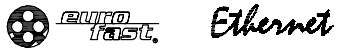
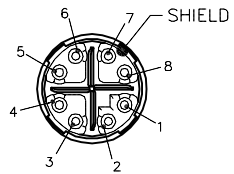
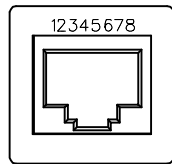


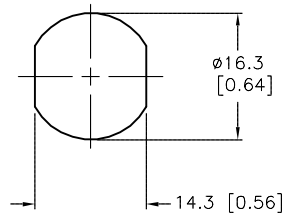
FEMALE END VIEW



RJ45SF END VIEW

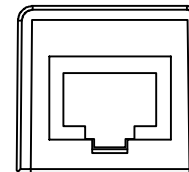
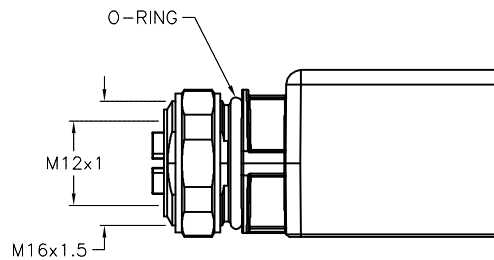
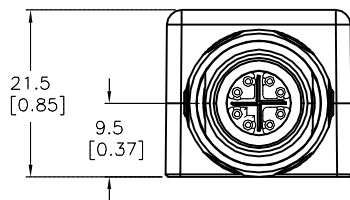
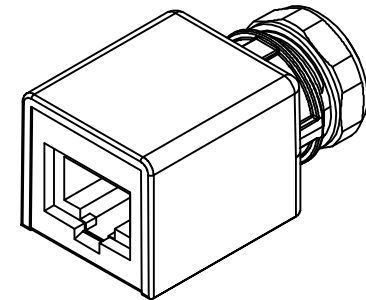


PANEL CUTOUT (TYP.)

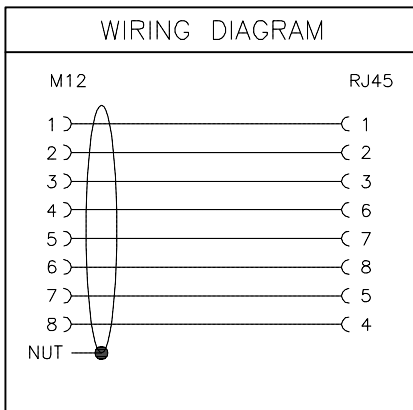


SPECIFICATIONS

CONTACT MATERIAL/PLATING (M12)	BRASS/NICKEL
CONTACT MATERIAL/PLATING (RJ45SF)	COPPER/GOLD
COUPLING NUT MATERIAL/PLATING (M12)	ZINC/NICKEL
HOUSING MATERIAL/PLATING	ZINC/NICKEL
RATED CURRENT [A]	1.0 A @ 40°C
RATED VOLTAGE [V]	57 VDC
PANEL THICKNESS	2.1mm-4.5mm
TRANSMISSION CHARACTERISTICS	CAT 6A
PROTECTION CLASS	IP65/67 (M12), IP20 (RJ45SF)



WIRING DIAGRAM



SOURCE DRAWING - FOR REFERENCE ONLY

RELATED DOCUMENTS 1. 2. 3. 4.	3RD ANGLE PROJECTION 	THIS DRAWING IS CONFIDENTIAL AND THE PROPERTY OF TURCK INC. USE OF THIS DOCUMENT WITHOUT WRITTEN PERMISSION IS PROHIBITED.		3000 CAMPUS DRIVE MINNEAPOLIS, MN 55441 1-800-544-7769 (763) 553-7300 (763) 553-0708 fax www.turck.us	
		DRFT RDS APVD A.A.	DATE 07/01/13 SCALE 1=1.0	DESCRIPTION FKSDX RJ45SF 86/ST	
MATERIAL SEE SPECIFICATIONS	ALL DIMENSIONS DISPLAYED ON THIS DRAWING ARE FOR REFERENCE ONLY CONTACT TURCK FOR MORE INFORMATION	UNIT OF MEASUREMENT MILLIMETER [INCH]		DO NOT SCALE THIS DRAWING	
FINISH SEE SPECIFICATIONS		FILE: U2-21790		SHEET 1 OF 1	

D	UPDATE SPECIFICATIONS	RDS	07/29/20	76051
REV	DESCRIPTION	BY	DATE	ECO NO.