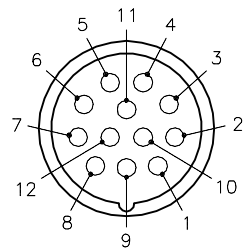
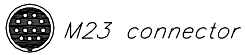


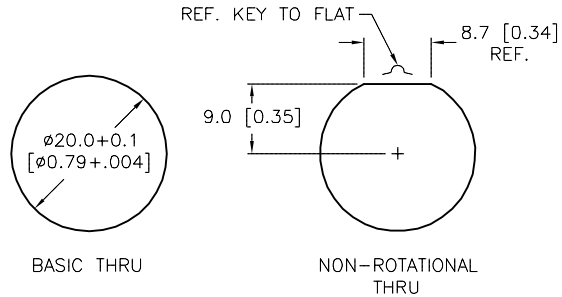
FEMALE END VIEW



- 1 = VIOLET
- 2 = BLUE
- 3 = GREY
- 4 = BLACK
- 5 = WHITE
- 6 = RED
- 7 = GREEN
- 8 = YELLOW
- 9 = ORANGE
- 10 = BROWN

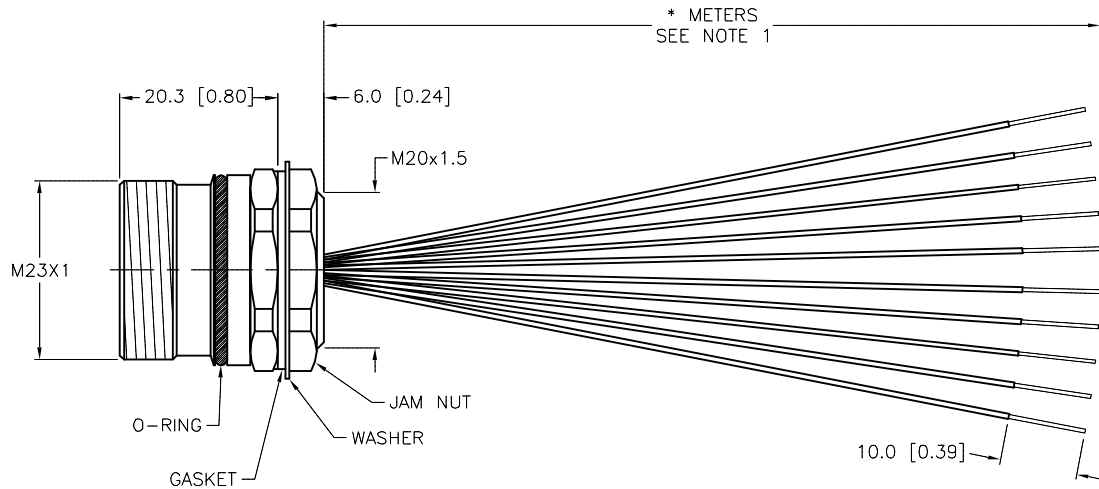
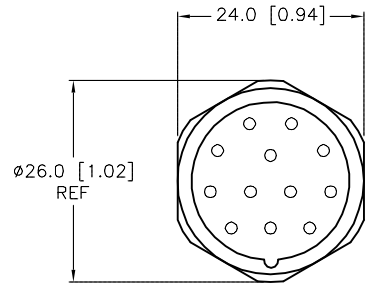


PANEL CUTOUT (TYPICAL)



SPECIFICATIONS

CONTACT CARRIER MATERIAL/COLOR	NYLON or PBT/GRAY
CONTACT MATERIAL/PLATING	BRASS/GOLD
CONNECTOR HOUSING MATERIAL/PLATING	BRASS/NICKEL
O-RING/GASKET MATERIAL	RUBBER (NBR or FPM)
RATED CURRENT [A]	6.0 A
RATED VOLTAGE [V]	300 V
CONDUCTOR INSULATION MATERIAL	PVC
MAXIMUM CONDUCTOR SIZE (AWG)	10x18 AWG
TEMPERATURE RANGE	-40°C TO +105°C
PROTECTION CLASS	MEETS IEC IP67
MAXIMUM PANEL THICKNESS	3.5 [0.138]



SOURCE DRAWING - FOR REFERENCE ONLY

NOTES:

1. "\*" INDICATES LEAD LENGTH IN METERS. CONTACT TURCK TO ORDER SPECIFIC LENGTHS.

RELATED DOCUMENTS		3RD ANGLE PROJECTION		THIS DRAWING IS CONFIDENTIAL AND THE PROPERTY OF TURCK INC. USE OF THIS DOCUMENT WITHOUT WRITTEN PERMISSION IS PROHIBITED.		<p>3000 CAMPUS DRIVE MINNEAPOLIS, MN 55441 1-800-544-7769 (763) 553-7300 (763) 553-0708 fax turck.com</p>			
1.	2.	3.	4.		DRFT	CBM	DATE 03/10/99	DESCRIPTION CKRF 12-10-*	
MATERIAL					ALL DIMENSIONS DISPLAYED ON THIS DRAWING ARE FOR REFERENCE ONLY	DSGN			SCALE 1=1.0
FINISH				CONTACT TURCK FOR MORE INFORMATION	UNIT OF MEASUREMENT <b>MILLIMETER [ INCH ]</b>			IDENTIFICATION NO.	REV E
E	UPDATE DRAWING TO M23 STANDARDS, SEE ECO	RWC	06/15/10		31201	DO NOT SCALE THIS DRAWING			FILE: 777000825
REV	DESCRIPTION	BY	DATE	ECO NO.					