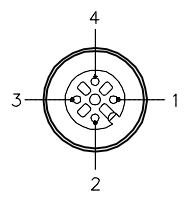
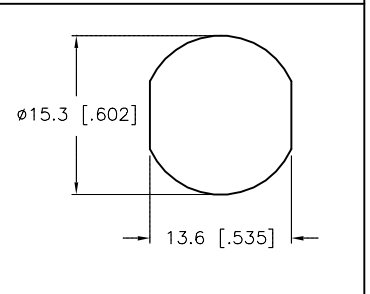


FEMALE END VIEW



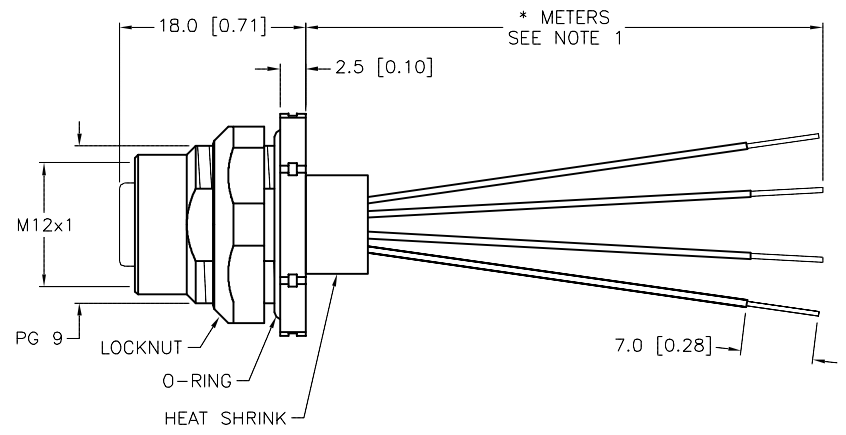
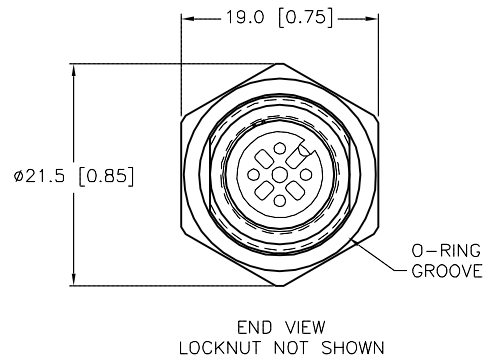
- 1 = BROWN
- 2 = WHITE
- 3 = BLUE
- 4 = BLACK

TYPICAL PANEL CUTOUT



SPECIFICATIONS

|                            |                                  |
|----------------------------|----------------------------------|
| CONTACT CARRIER MATERIAL   | NYLON OR TPU                     |
| CONTACT MATERIAL/PLATING   | BRASS/GOLD                       |
| O-RING MATERIAL            | BUNA-N                           |
| RATED CURRENT [A]          | 4.0 A                            |
| RATED VOLTAGE [V]          | 250 V                            |
| HOUSING/LOCKNUT MATERIAL   | BRASS/NICKEL                     |
| NUMBER OF CONDUCTORS [AWG] | 4x22 AWG                         |
| TEMPERATURE RATING         | -40°C to +80°C (-40°F to +176°F) |
| PROTECTION CLASS           | MEETS NEMA 1,3,4,6P AND IEC IP68 |



| CABLE LENGTH                        | TOLERANCE *   |
|-------------------------------------|---|
| ALL LENGTHS                         | + 4% (OR 50mm) OF LENGTH<br>- 0% (OR 0mm) OF LENGTH<br>WHICHEVER IS GREATER |
| STRIP LENGTH                        | TOLERANCE *   |
| 0-7mm                               | ±0.5mm  |
| 8-29mm                              | ±1.0mm  |
| 30-49mm                             | ±2.0mm  |
| 50-69mm                             | ±3.0mm  |
| 70-100mm                            | ±4.0mm  |
| OVER 100mm                          | ±5.0mm  |
| <b>* UNLESS OTHERWISE SPECIFIED</b> |   |

NOTES:  
1. "\*" INDICATES LEAD LENGTH IN METERS. CONTACT TURCK TO ORDER SPECIFIC LENGTHS.

SOURCE DRAWING - FOR REFERENCE ONLY

|   |   |  |   |   |                           |                           |
|---|---|--|---|---|---------------------------|---------------------------|
| RELATED DOCUMENTS<br>1.<br>2.<br>3.<br>4. | 3RD ANGLE PROJECTION<br>  | THIS DRAWING IS CONFIDENTIAL AND THE PROPERTY OF TURCK INC. USE OF THIS DOCUMENT WITHOUT WRITTEN PERMISSION IS PROHIBITED. |   | 3000 CAMPUS DRIVE<br>MINNEAPOLIS, MN 55441<br>1-800-544-7769<br>(763) 553-7300<br>(763) 553-0708 fax<br>turck.com |                           |                           |
|   |   | DRFT   | JB  | DATE  | 04/01/03                  | DESCRIPTION<br>FKFD 4.4-* |
| MATERIAL<br>SEE SPECIFICATIONS            | ALL DIMENSIONS DISPLAYED ON THIS DRAWING ARE FOR REFERENCE ONLY | DSGN   |   | SCALE   | 1=.8                      |                           |
| FINISH<br>SEE SPECIFICATIONS              |   | CONTACT TURCK FOR MORE INFORMATION   | UNIT OF MEASUREMENT<br><b>MILLIMETER [ INCH ]</b> |   | IDENTIFICATION NO.        | REV<br>D                  |
| D   |   | DRAWING PROCESSED AS PART OF ECO 33971   |   | CBM   | 04/06/11                  | 33971                     |
| REV                                       | DESCRIPTION   | BY   | DATE  | ECO NO.   | DO NOT SCALE THIS DRAWING |                           |
|   |   |  |   |   | FILE: 777001953           | SHEET 1 OF 1              |