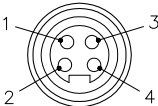
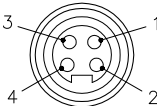
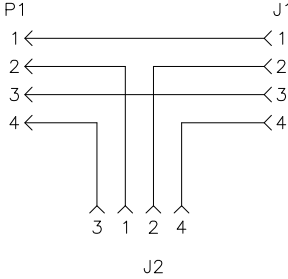
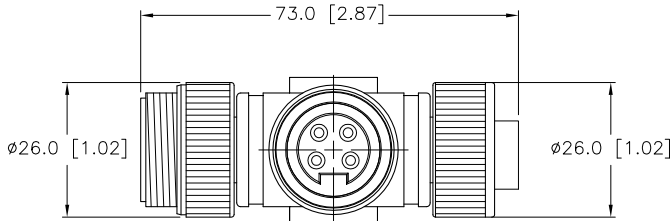
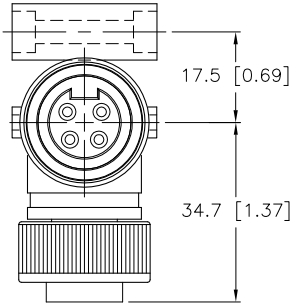
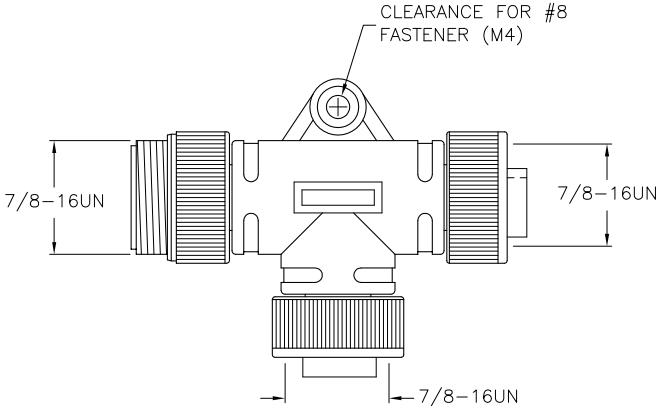
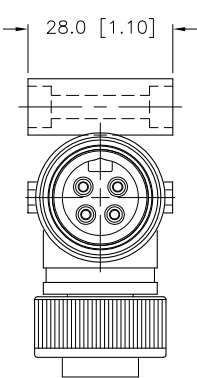
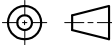


MALE END VIEW	FEMALE END VIEW	WIRING DIAGRAM	SPECIFICATIONS	
			CONTACT CARRIER MATERIAL/COLOR	NYLON OR TPU/YELLOW
			MOLDED HEAD MATERIAL/COLOR	TPU/RED
			CONTACT MATERIAL/PLATING	BRASS/GOLD
			COUPLING NUT MATERIAL/PLATING	BRASS/NICKEL
			RATED CURRENT [A]	9.0 A
			RATED VOLTAGE [V]	250 V
			TEMPERATURE RATING	+80°C (+176°F)
			PROTECTION CLASS	MEETS NEMA 1,3,4,6P AND IEC IP67



SOURCE DRAWING - FOR REFERENCE ONLY

RELATED DOCUMENTS				3RD ANGLE PROJECTION		THIS DRAWING IS PROPERTY OF TURCK INC. USE OF THIS DOCUMENT WITHOUT WRITTEN PERMISSION IS PROHIBITED.		3000 CAMPUS DRIVE MINNEAPOLIS, MN 55441 1-800-544-7769 (763) 553-7300 (763) 553-0708 fax turck.com	
1. 2. 3. 4.						DRFT RDS		DATE 01/22/02	
MATERIAL				ALL DIMENSIONS DISPLAYED ON THIS DRAWING ARE FOR REFERENCE ONLY		DSGN		SCALE 1=1.5	
FINISH				CONTACT TURCK FOR MORE INFORMATION		UNIT OF MEASUREMENT		DESCRIPTION	
						MILLIMETER [INCH]		RSM RKM RKM 40 DESD	
						DO NOT SCALE THIS DRAWING		IDENTIFICATION NO.	
								U0144-102	
								REV	
								D	
D DRAWING PROCESSED AS PART OF ECO 33971				CBM 04/07/11 33971				FILE: U0144-102	
REV DESCRIPTION				BY DATE ECO NO.				SHEET 1 OF 1	