

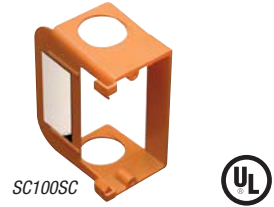
# Carlton® LV

## New Work and Old Work Boxes



### Low Voltage Add-On Bracket

- Dual Voltage Capability accommodates high and low voltage devices in the same box.
- Attaches to virtually any non-metallic electrical box as long as there's a side for the tape to stick to.
- Accepts a two-gang face plate.
- 3/4" Resi-Rings
- Allows for the installation of most decora style yoke plates



CAT. NO.	SIZE CU. IN.	MOUNTING MEANS	DESCRIPTION	DIMENSIONS (IN.)	STD. CTN. QTY.
• SC100SC	N/A	Tape	1-gang	3.68 L x 2.36 W x 3.10 D	24

• UL Listed E216492 *Not classified for two-hour firewall/fireceiling rating*

### Low Voltage Adjustable Brackets

- Accommodates varying finished wall thicknesses – ideal for wood paneling, tile or stucco walls.
- With the turn of a screw, adjust to any wall thickness.
- Steel Mounting Bracket provides a secure mount.
- Backless Design accommodates large/deep low voltage devices.
- Eliminates cutting the backs off Electrical Boxes.
- Accommodates bend radius requirements for low voltage cabling.
- Provides ample space for installation.
- Removable Bracket and Interchangeable Mounting Bracket – upgrade from a one-gang to a two-gang anytime.

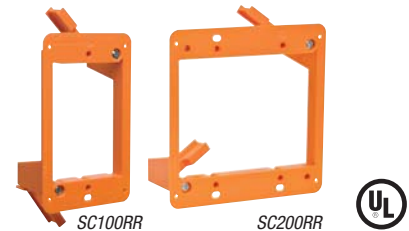


CAT. NO.	SIZE CU. IN.	MOUNTING MEANS	DESCRIPTION	DIMENSIONS (IN.)	STD. CTN. QTY.
• SC100ADJC	21	Adjustable bracket	1-gang	3.56 L x 3.88 W x 1.69 D	24
• SC200ADJC	34	Adjustable bracket	2-gang	3.56 L x 5.63 W x 1.69 D	20

• UL Listed E216492 *Not classified for two-hour firewall/fireceiling rating*

### Old Work Brackets

- Rectangular Flange for faster/easier installation.
- Shallow Bracket – Less material, easier to work with.
- Marking hole for wall opening.
- Thinner Flange for less protrusion on the wall.
- SINGLE GANG ONLY – Clamps stop at center point to prevent the bracket from twisting or bending out of the wall.



CAT. NO.	SIZE CU. IN.	MOUNTING MEANS	DESCRIPTION	DIMENSIONS (IN.)	STD. CTN. QTY.
• SC100RR	N/A	Swing brackets	1-gang	4.32 L x 2.52 W x 1.66 D	12
• SC200RR	N/A	Swing brackets	2-gang	4.28 L x 4.28 W x 1.66 D	6

• UL Listed E216492 *Not classified for two-hour firewall/fireceiling rating*

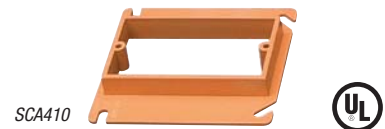
### Low Voltage Divider Plate



CAT. NO.	STD. CTN. QTY.
• SCDIV	50

• For use with Carlton SuperBlue® boxes only (Refer to page 12)

### Mud Ring (4" sq. 1/2" Raised Cover)



CAT. NO.	DESCRIPTION	STD. CTN. QTY.
• SCA410	1-gang	20

• UL Listed E11461  
*Classified for two hour fire resistive wall assemblies when used with two-gang Quick Connect outlet and switch boxes*

