
CATALOG

Red Dot®

Commercial rigid fittings



Thomas & Betts is now ABB Installation Products, but our long legacy of quality products and innovation remains the same. From connectors that help wire buildings on Earth to cable ties that help put machines in space, we continue to work every day to make, market, design and sell products that provide a smarter, safer and more reliable flow of electricity, from source to socket.

Table of contents

002–009

Conduit bodies

010–013

Fittings and accessories

Conduit Bodies, Covers and Gaskets

Application

- Junction for branch conduits —“A” Series bodies for Rigid and IMC conduit maintain a weather-resistant conduit system when used with covers and gaskets
- “B” Series bodies for thin wall conduit (EMT) saves cost of connector and labor in indoor applications
- Spacious, accessible wiring chamber provides a convenient location to pull conductors and make splices
- Aluminum conduit bodies can be used with rigid metal conduit — NEC® 342 and 344, and Steel EMT, NEC® 358

Features/Benefits

- Copper-free* aluminum provides increased corrosion resistance
- Precision-cast and machined surfaces permit safer wire pulling
- Clean cover edges provide good gasket sealing
- Precision NPT threaded and set screw hubs enable trouble-free field installation for rigid, IMC or EMT conduit
- Retained deep-slotted stainless steel cover screws for faster installation
- Clear UL, CSA and cubic-content markings speed approval by inspectors All PVC boxes are listed to UL514C
- All PVC boxes are listed for masonry walls
- All PVC boxes are UL® Classified for two-hour fire wall and/or fire ceiling
- All PVC boxes meet NEMA OS-2
- All PVC boxes are permissible for use with 90°C conductors
- UL File E11461 and R9140

Standard Finish:

- Conduit bodies and die-cast covers: powder coated
- Stamped covers: Natural

Standard Materials:

- Conduit Bodies: Die-cast aluminum alloy A360 with less than .004% copper content (copper-free)
- Covers: (CV Series) Die-cast aluminum alloy A360 with less than .004% copper content (copper-free), and stainless steel screws
- Covers: (SCV Series) Stamped aluminum alloy with less than .004% copper content (copper-free), and stainless steel screws
- Gaskets: (GKN Series) Neoprene
- Gaskets: (GKV Series) Composition

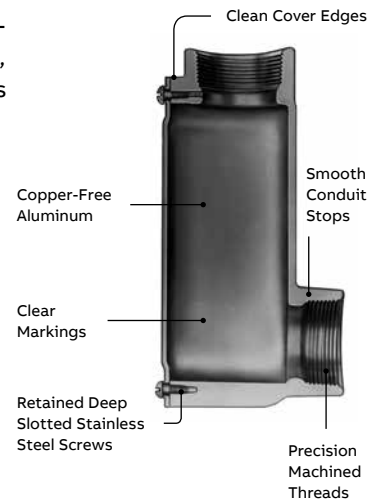
Compliances:

- UL® Listed
- CSA Certified
- Federal Spec. W-C-586
- NEC® Article 314.28

Sample Specifications:

- Conduit bodies shall be die-cast copper-free* aluminum alloy A360. All conduit stops shall be free of rough edges. Conduit bodies shall be finished with powder-coated paint. Conduit bodies shall be Red-Dot® Catalog No. _____

* Less than .004% copper content. NEC and National Electrical Code are registered trademarks of the National Fire Protection Association, Inc.



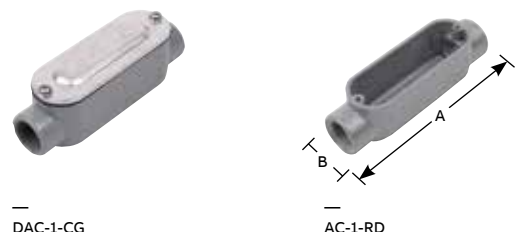
ALB					ALL					BT				
Cat. No.	Trade Size (in.)	A (in.)	B (in.)	Std. Ctn.	Cat. No.	Trade Size (in.)	A (in.)	B (in.)	Std. Ctn.	Cat. No.	Hub Size (in.)	A (in.)	B (in.)	Std. Ctn.
AC-1-RD	1/2	3 7/8	1 2 1/64	50	D-PAK* *									
AC-2-RD	3/4	4 5/8	1 17/32	50	DAC-1-CG	1/2			12					
AC-3	1	5 3/8	1 3/4	25	DAC-2-CG	3/4			15					
AC-4-RD	1 1/4	7 1/4	2 1/2	10	DAC-3-CG	1			8					
AC-5	1 1/2	7 1/4	2 1/8	10	DAC-4-CG	1 1/4			6					
AC-6-RD	2	9 1/2	3 1/2	5	DAC-5-CG	1 1/2			5					
AC-7*	2 1/2	12 1/4	4 1/2	1	DAC-6-CG	2			2					
AC-8*	3	12 1/4	4 1/2	1	DAC-7-CG	2 1/2			2					
AC-9*	3 1/2	15	5 1/2	1	DAC-8-CG	3			2					
AC-10-RD*	4	15	5 1/2	1	DAC-9-CG	3 1/2			2					
					DAC-10-CG	4			2					

* Shipped with cover. Price includes cost of cover and body. UL File No. E-28688.

Conduit Bodies, Covers and Gaskets

A Series C Style

- Fittings, covers and gaskets are interchangeable with those produced by other leading manufacturers
- Finish: Powder-coated urethane



Conduit Bodies, Covers and Gaskets

A Series (continued)

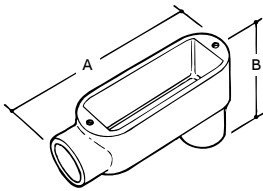
LB Style



DALB-1-CG



ALB-1



Type ALB

LL Style

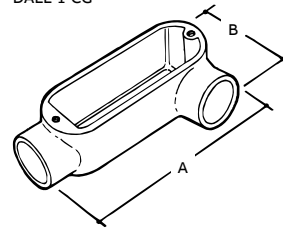
- Die-cast copper-free aluminum construction
- Provide access for pulling, splicing and maintenance
- For rigid conduit/IMC applications
- UL Listed



DALL-1-CG



ALL-1



Type ALL



Cat. No.	Trade Size (in.)	A (in.)	B (in.)	Std. Ctn.
ALB-1	1/2	3 7/8	2 1/16	50
ALB-2	3/4	4 5/8	2 7/16	50
ALB-3	1	5 3/8	2 3/4	25
ALB-4	1 1/4	7 1/4	3 9/16	10
ALB-5	1 1/2	7 1/4	3 13/16	10
ALB-6	2	9 1/2	4 1/2	5
ALB-7*	2 1/2	12 1/4	5 1/4	1
ALB-8*	3	12 1/4	5 7/8	1
ALB-9*	3 1/2	15	6 15/16	1
ALB-10*	4	15	6 15/16	1

Cat. No.	Hub Size (in.)	Std. Ctn.
D-PAK**		
DALB-1-CG	1/2	25
DALB-2-CG	3/4	16
DALB-3-CG	1	6
DALB-4-CG	1 1/4	5
DALB-5-CG	1 1/2	5
DALB-6-CG	2	2
DALB-7-CG	2 1/2	2
DALB-8-CG	3	2
DALB-9-CG	3 1/2	2
DALB-10-CG	4	2

* Shipped with cover. Price includes cost of cover and body.
UL File No. E-28688.



Cat. No.	Trade Size (in.)	A (in.)	B (in.)	Std. Ctn.
ALL-1	1/2	3 7/8	2	50
ALL-2	3/4	4 5/8	2 15/16	50
ALL-3	1	5 3/8	2 1/2	25
ALL-4	1 1/4	7 1/4	3 3/8	10
ALL-5	1 1/2	7 1/4	3 3/8	10
ALL-6	2	9 1/2	3 15/16	5
ALL-7*	2 1/2	12 1/4	5 1/2	1
ALL-8*	3	12 1/4	5 1/2	1
ALL-9*	3 1/2	15	6 1/2	1
ALL-10*	4	15	6 1/2	1

Cat. No.	Hub Size (in.)	Std. Ctn.
D-PAK**		
DALL-1-CG	1/2	12
DALL-2-CG	3/4	15
DALL-3-CG	1	5
DALL-4-CG	1 1/4	4
DALL-5-CG	1 1/2	5
DALL-6-CG	2	2
DALL-7-CG	2 1/2	2
DALL-8-CG	3	2
DALL-9-CG	3 1/2	2
DALL-10-CG	4	2

* Shipped with cover. Price includes cost of cover and body.
UL File No. E-28688.

Conduit Bodies, Covers and Gaskets

A Series (continued)

LR Style

- Die-cast copper-free aluminum construction
- Provide access for pulling, splicing and maintenance
- For rigid conduit/IMC applications

- Fittings, covers and gaskets are interchangeable with those produced by other leading manufacturers
- Finish: Powder-coated urethane



Cat. No.	Trade Size (in.)	A (in.)	B (in.)	Std. Ctn.	Cat. No.	Hub Size (in.)	Std. Ctn.
ALR-1	1/2	3 7/8	2	50	D-PAK* *		
ALR-2	3/4	4 5/8	2 15/16	50	DALR-1-CG	1/2	12
ALR-3	1	5 3/8	2 1/2	25	DALR-2-CG	3/4	15
ALR-4	1 1/4	7 1/4	3 3/8	10	DALR-3-CG	1	5
ALR-5	1 1/2	7 1/4	3 3/8	10	DALR-4-CG	1 1/4	4
ALR-6	2	9 1/2	3 15/16	5	DALR-5-CG	1 1/2	4
ALR-7*	2 1/2	12 1/4	5 1/2	1	DALR-6-CG	2	2
ALR-8*	3	12 1/4	5 1/2	1	DALR-7-CG	2 1/2	2
ALR-9*	3 1/2	15	6 1/2	1	DALR-8-CG	3	2
ALR-10*	4	15	6 1/2	1	DALR-9-CG	3 1/2	2
					DALR-10-CG	4	2

* Threaded and shipped with cover. Price includes cost of cover and body. UL File No. E-28688.

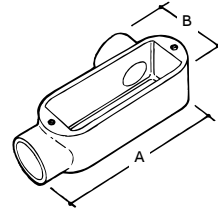
UL Listed.



DALR-1-CG



ALR-1



Type ALR

LR Style



Cat. No.	Trade Size (in.)	A (in.)	B (in.)	Std. Ctn.	Cat. No.	Hub Size (in.)	Std. Ctn.
AT-1	1/2	3 7/8	2 1/16	50	D-PAK* *		
AT-2	3/4	4 5/8	2 11/32	50	DAT-1-CG	1/2	12
AT-3	1	5 3/8	2 3/8	25	DAT-2-CG	3/4	14
AT-4	1 1/4	7 1/4	3 17/32	10	DAT-3-CG	1	5
AT-5	1 1/2	7 1/4	3 17/32	10	DAT-4-CG	1 1/4	5
AT-6	2	9 1/2	4	5	DAT-5-CG	1 1/2	5
AT-7*	2 1/2	12 1/4	5 25/32	1	DAT-6-CG	2	2
AT-8*	3	12 1/4	5 25/32	1	DAT-7-CG	2 1/2	2
AT-9*	3 1/2	15	6 13/16	1	DAT-8-CG	3	2
AT-10*	4	15	6 13/16	1	DAT-9-CG	3 1/2	2
					DAT-10-CG	4	2

* Threaded and shipped with cover. Price includes cost of cover and body. UL File No. E-28688.

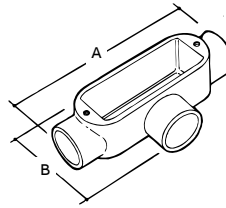
UL Listed.



DAT-1-CG



AT-1



Type AT

LRL Style

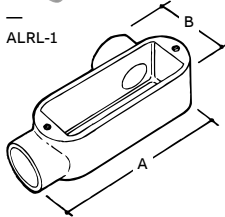


Cat. No.	Trade Size (in.)	A (in.)	B (in.)	Std. Ctn.
ALRL-1	1/2	3 7/8	2	50
ALRL-2	3/4	4 5/8	2 15/16	50
ALRL-3	1	5 3/8	2 1/2	25
ALRL-4	1 1/4	7 1/4	3 3/8	10
ALRL-5	1 1/2	7 1/4	3 3/8	10
ALRL-6	2	9 1/2	3 15/16	5

* Threaded and shipped with cover. Price includes cost of cover and body. UL File No. E-28688.



ALRL-1



Type ALRL

Dead End

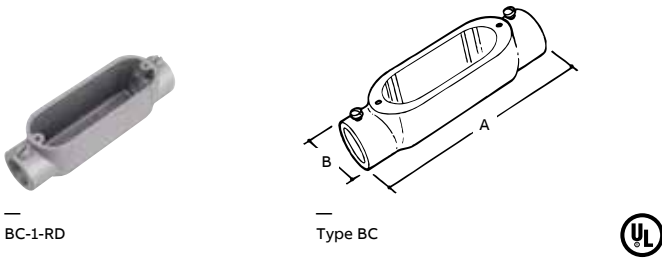
- Retained stainless steel cover screws
- Cubic capacity UL and CSA clearly shown
- Smooth throats for easy wire pulling
- Ultra-high pressure die-cast copper-free aluminum
- UL Listed, CSA Certified

Cat. No.	Hub Size (in.)
AE-1	1/2
AE-2	3/4

Aluminum Conduit Bodies, Covers and Gaskets

B Series

C Style



BC-1-RD

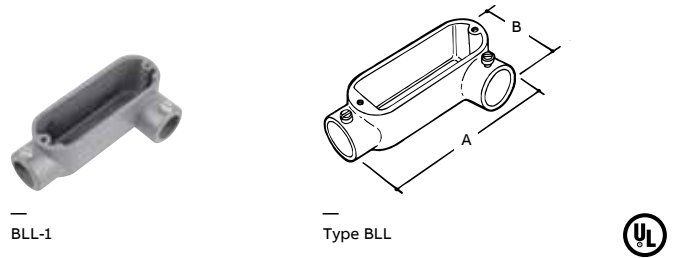
Type BC



Cat. No.	Trade Size (in.)	A (in.)	B (in.)	Std. Ctn.
BC-1-RD	1/2	3 7/8	1 21/64	50
BC-2-RD	3/4	4 5/8	1 17/32	50
BC-3	1	5 3/8	1 3/4	25
BC-4	1 1/4	7 1/4	2 1/2	10
BC-5	1 1/2	7 1/4	2 1/2	10
BC-6	2	9 1/2	3 1/8	5

UL File No. E-28688.

LL Style



BLL-1

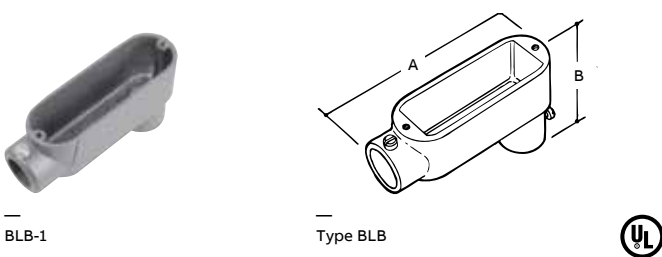
Type BLL



Cat. No.	Trade Size (in.)	A (in.)	B (in.)	Std. Ctn.
BLL-1	1/2	3 7/8	2	50
BLL-2	3/4	4 5/8	2 5/16	50
BLL-3	1	5 3/8	2 1/2	25

UL File No. E-28688.

LB Style



BLB-1

Type BLB

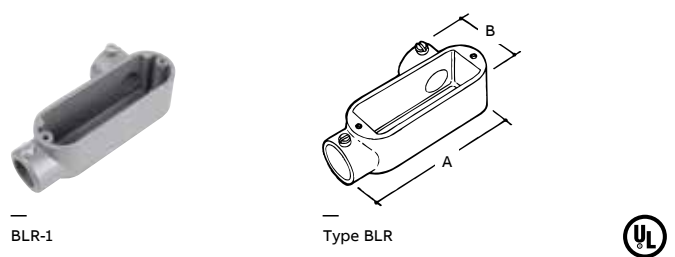


Cat. No.	Trade Size (in.)	A (in.)	B (in.)	Std. Ctn.
BLB-1	1/2	3 7/8	2 1/16	50
BLB-2	3/4	4 5/8	2 7/16	50
BLB-3	1	5 3/8	2 3/4	25
BLB-4	1 1/4	7 1/4	3 9/16	10
BLB-5	1 1/2	7 1/4	3 13/16	10
BLB-6	2	9 1/2	4 1/2	5
BLB-7*	2 1/2	12 1/4	5 1/4	1
BLB-8*	3	12 1/4	5 7/8	1
BLB-9*	3 1/2	15	6 15/16	1
BLB-10*	4	15	6 15/16	1

Cat. No.	Trade Size (in.)	Std. Ctn.
DBLB-1-C*	1/2	25
DBLB-2-C*	3/4	16
DBLB-3-C*	1	6

* Threaded Hubs shipped with cover. Price includes cost of cover and body. UL File No. E-28688.

LR Style



BLR-1

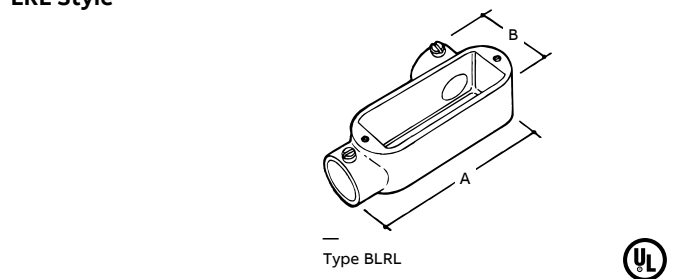
Type BLR



Cat. No.	Trade Size (in.)	A (in.)	B (in.)	Std. Ctn.
BLR-1	1/2	3 7/8	2	50
BLR-2	3/4	4 5/8	2 5/16	50
BLR-3	1	5 3/8	2 1/2	25

UL File No. E-28688.

LRL Style



Type BLRL



Cat. No.	Trade Size (in.)	A (in.)	B (in.)	Std. Ctn.
BLRL-1	1/2	3 7/8	2	50
BLRL-2	3/4	4 5/8	2 15/16	50
BLRL-3	1	5 3/8	2 1/2	25
BLRL-4	1 1/4	7 1/4	3 3/8	10
BLRL-5	1 1/2	7 1/4	3 3/8	10
BLRL-6	2	9 1/2	3 15/16	5

Shipped with cover. Price includes cost of cover and body. UL File No. E-28688.

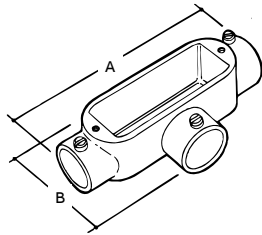
Aluminum Conduit Bodies, Covers and Gaskets

— B Series (continued)

T Style



BT-1



Type BT



Cat. No.	Trade Size (in.)	A (in.)	B (in.)	Std. Ctn.
BT-1	1/2	3 7/8	2 1/16	50
BT-2	3/4	4 5/8	2 11/32	50
BT-3	1	5 3/8	2 5/8	25
BT-4	1 1/4	7 1/4	3 17/32	10
BT-5	1 1/2	7 1/4	3 17/32	10
BT-6	2	9 1/2	4	5
BT-7*	2 1/2	12 1/4	5 25/32	1
BT-8*	3	12 1/4	5 25/32	1
BT-9*	3 1/2	15	6 13/16	1
BT-10*	4	15	6 13/16	1

* Threaded and shipped with cover. Price includes cost of cover and body. UL File No. E-28688.

Gaskets — Composition

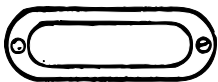


Fiber Gasket

Cat. No.	Conduit Size (in.)	Std. Ctn.
GKV-1	1/2	100
GKV-2	3/4	50
GKV-3	1	25
GKV-4	1 1/4–1 1/2	25
GKV-5	2	25
GKV-6	2 1/2–3	5
GKV-7	3 1/2–4	5

Aluminum Covers with Stainless Steel Screws

- CV = Die-cast aluminum
- SCV = Stamped aluminum
- Steel zinc-plated screws



Cat. No.	Conduit Size (in.)	Std. Ctn.
CV-1	1/2	250
CV-2	3/4	250
CV-3	1	250
CV-4	1 1/4–1 1/2	50
CV-5	2	25
CV-6	2 1/2–3	5
CV-7	3 1/2–4	5
SCV-1	1/2	250
SCV-2	3/4	250
SCV-3	1	250
SCV-4	1 1/4–1 1/2	250
SCV-5	2	100

UL File No. E-28688.

Gaskets — Neoprene

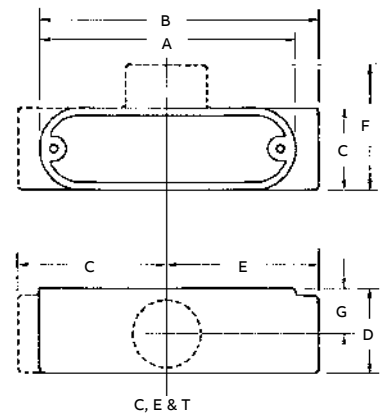
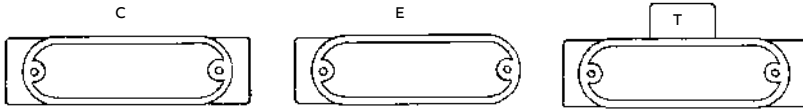
- Fiber or neoprene material



Neoprene Gasket

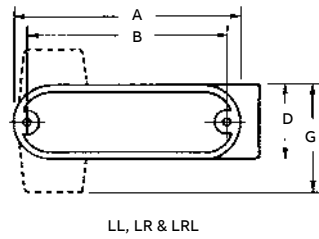
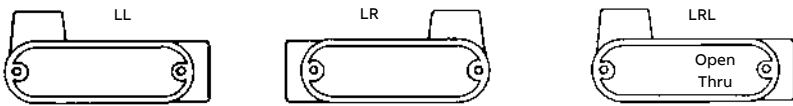
Cat. No.	Conduit Size (in.)	Std. Ctn.
GKN-1	1/2	100
GKN-2	3/4	50
GKN-3	1	25
GKN-4	1 1/4–1 1/2	25
GKN-5	2	25
GKN-6	2 1/2–3	5
GKN-7	3 1/2–4	5

C, E and T Dimensions



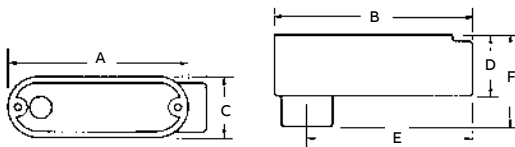
Dimensions (in.)								
Size (in.)	A	B	C	D	E	F	G	CI
1/2	3 7/8	4 3/8	1	1 3/8	2 13/32	2 1/16	1 3/16	4.3
3/4	4 5/8	5 1/8	1 17/32	1 5/8	2 25/32	2 11/32	1 5/16	7.3
1	5 3/8	5 5/16	1 3/4	1 7/8	3 1/2	2 5/8	1	11.8
1 1/4	7 1/4	7 7/8	2 1/2	2 1/2	4 3/16	3 17/32	1 3/8	32.0
1 1/2	7 1/4	7 7/8	2 1/2	2 3/4	4 3/16	3 17/32	1 1/2	32.0
2	9 1/2	10 3/16	3 3/8	3 3/16	5 13/32	4	1	69.5
2 1/2	12 1/4	13	4 1/2	4 1/2	6 7/8	5 25/32	2 7/16	190.0
3	12 1/4	13	4 1/2	4 1/2	6 7/8	5 25/32	2 7/16	190.0
3 1/2	15	16 5/16	5 1/2	5 9/16	8 13/16	6 3/16	3	366.0
4	15	16 5/16	5 1/2	5 9/16	8 13/16	6 3/16	3	366.0

LL, LR and LRL Dimensions



Dimensions (in.)										
Size (in.)	A	B	C	D	E	F	G	H	CI	CI Only
1/2	3 7/8	3 1/2	4 5/16	1 5/16	1 3/8	3 9/16	2	2 25/32	4.3	4.8
3/4	4 5/8	4 1/8	5 1/8	1 17/32	1 5/8	4 1/8	2 5/16	7/8	7.3	7.5
1	5 3/8	4 7/8	5 5/16	1 3/4	1 7/8	4 7/8	2 1/2	1	11.8	12.5
1 1/4	7 1/4	6 1/2	7 7/8	2 1/2	2 3/4	6 5/16	3 3/8	1 1/2	32.0	36.5
1 1/2	7 1/4	6 1/2	7 7/8	2 1/2	2 3/4	6 5/16	3 3/8	1 1/2	32.0	36.5
2	9 1/2	8 9/16	10 3/16	3 3/8	3 3/16	8 3/16	3 15/16	1 15/16	69.5	73.8
2 1/2	12 1/4	11 1/4	13	4 1/2	4 1/2	10 1/4	5 1/2	2 7/8	190.0	—
3	12 1/4	11 1/4	13	4 1/2	4 1/2	10 1/4	5 1/2	2 7/8	190.0	—
3 1/2	15	14 7/16	16 1/4	5 1/2	5 1/2	12 3/4	6 1/2	3	366.0	—
4	15	14 7/16	16 1/4	5 1/2	5 1/2	12 3/4	6 1/2	3	366.0	—

LB Dimensions



Dimensions (in.)							
Size (in.)	A	B	C	D	E	F	CI
1/2	3 7/8	4 9/32	1 5/16	1 5/16	3 1/2	2 1/16	4.3
3/4	4 5/8	5 1/8	1 17/32	1 5/8	4 1/4	2 7/16	7.3
1	5 3/8	5 5/16	1 3/4	1 7/8	4 15/16	2 3/4	11.8
1 1/4	7 1/4	7 7/8	2 1/2	2 1/2	6 1/2	3 9/16	32.0
1 1/2	7 1/4	7 7/8	2 1/2	2 3/4	6 5/16	3 13/16	32.0
2	9 1/2	9 13/16	3 3/8	3 7/16	8	4 1/2	69.5
2 1/2	12 1/4	13	4 1/2	3 7/8	10 27/32	5 1/4	190.0
3	12 1/4	13	4 1/2	4 1/2	10 1/2	5 7/8	190.0
3 1/2	15	16 5/16	5 1/2	5 9/16	13 1/2	6 15/16	366.0
4	15	16 5/16	5 1/2	5 9/16	13 1/2	6 15/16	366.0

Conduit Body Wiring Table* — Style of Fitting

Trade Size (in.)	LB	C	T	LL, LR, LRL
3/4	#6 AWG	#6 AWG	#6 AWG	#6 AWG
1	#4 AWG	#4 AWG	#4 AWG	#4 AWG
1 1/4	#2 AWG	#2 AWG	#2 AWG	#2 AWG
1 1/2	1/0 AWG	1/0 AWG	#1 AWG	1/0 AWG
2	4/0 AWG	2/0 AWG	1/0 AWG	4/0 AWG
2 1/2	300 kcmil	250 kcmil	2/0 AWG	300 kcmil
3	400 kcmil	250 kcmil	2/0 AWG	500 kcmil
3 1/2	500 kcmil	350 kcmil	250 kcmil	500 kcmil
4	500 kcmil	350 kcmil	250 kcmil	500 kcmil

* The maximum number and size of wire that can be safely pulled is based on three type XHHW wires or equal.

Mogul Pulling Elbow/Service Entrance Bodies

Application

- Raintight junction for bringing electrical service into a location
- Accessible wiring chamber provides a convenient location to pull conductors and make splices

Features/Benefits

- Copper-free* aluminum provides increased corrosion resistance
- Precision-cast and machined surfaces permit safer wire pulling
- Clean cover edges provide good gasket sealing
- Precision NPT threaded hubs enable trouble-free field installation for rigid and IMC conduit
- Retained deep-slotted stainless steel cover screws for faster installation
- Clear UL®, CSA and cubic content markings speed approval by inspectors



Standard Materials:

- Service Entrance Bodies: Die-cast aluminum alloy A360 with less than .004% copper content (copper-free)
- Covers ½" and ¾": Stamped aluminum alloy and stainless steel screws
- Covers 1" through 4": Die-cast aluminum alloy A360 with less than .004% copper content (copper-free) and stainless steel screws
- Gaskets: Composition

Standard Finish:

- Powder-coated gray

Compliances:

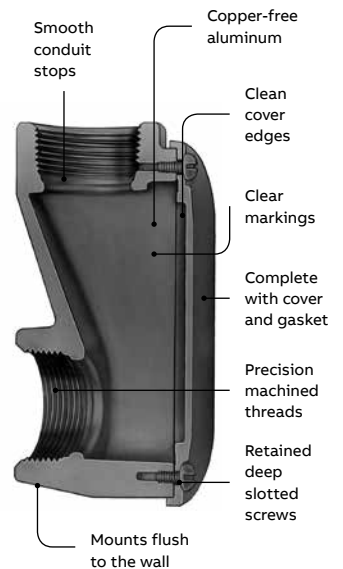
- UL® Listed
- CSA Certified
- Federal Spec. W-C-586
- NEC® Section 314.28

Sample Specifications:

- Service Entrance Fittings shall be die-cast

copper-free* aluminum alloy A360. All conduit stops shall be free of rough edges. Service Entrance Fittings shall be finished with aluminum lacquer. Service Entrance Fittings shall be Red·Dot® Catalog No. _____

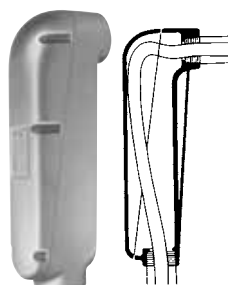
* Less than .004% copper content.



Aluminum Mogul Pulling Elbows

Spacious, accessible wiring chamber for pulling conductors, making splices and bringing electrical service into a location.

- Dome cover — extra bending room
- Deep-slotted stainless steel cover screws
- "I" beam construction adds strength
- Smooth throats for easy wire pulling
- Extra wiring room
- Meets NEC® Section 314.28
- Ultra-high pressure die-cast aluminum
- UL® Listed, CSA Certified
- Copper-free aluminum, less than .004% copper content



Bodies with Covers and Gaskets

Cat. No.	Hub Size	Unit Qty.	Std. Pkg.	Wt. lbs. per 100
MALB-3	1"	1	10	174
MALB-4	1¼"	2	10	160
MALB-5	1½"	1	1	400
MALB-6	2"	1	1	375
MALB-7	2½"	1	1	1100
MALB-8	3"	1	1	1060
MALB-9	3½"	1	1	1900
MALB-10	4"	1	1	1800



Replacement Covers and Gaskets

Cover Cat. No.	Gasket Cat. No.	Hub Size	Unit Qty.	Std. Pkg.	Wt. lbs. per 100
—	MGKV-5	1¼"	1	5	4
MALB-56CV	MGKV-5	1½" to 2"	1	5	4
MALB-78CV	MGKV-6	2½" to 3"	1	5	5
MALB-90CV	MGKV-7	3½" to 4"	1	5	5

Service Entrance Fittings

Accessible junctions for bringing electrical service into a location.

- Mounts flush to wall
- Standard and extra-long configurations
- Retained deep-slotted stainless steel cover screws
- Smooth throats for easy wire pulling
- Ultra-high pressure die-cast aluminum
- Meets NEC® Article 370-28
- UL® Listed, CSA Certified
- Copper-free aluminum, less than .004 copper content



ASLB-1



DASLB-1

1/2"-2" Bodies with Covers and Gaskets

Cat. No.	Hub Size (in.)	Cover Only
ASLB-1	1/2	ASLB1CV
ASLB-2	3/4	ASLB2CV
ASLB-3	1	ASLB3CV
ASLB-4	1 1/4	ASLB4CV
ASLB-5	1 1/2	ASLB5CV
ASLB-6	2	ASLB6CV

D-PAK® *

Cat. No.	Hub Size (in.)
DASLB-1	1/2
DASLB-2	3/4
DASLB-3	1

* Cover only.



ASLB



SALB

2 1/2"-4" Bodies with Covers and Gaskets

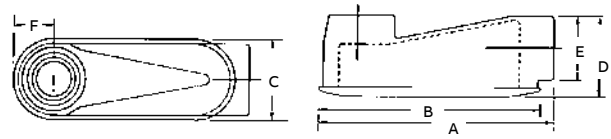
Cat. No.	Hub Size (in.)
SALB-7	2 1/2
SALB-8	3
SALB-9	3 1/2
SALB-10	4

Extra-Long Bodies with Covers and Gaskets

Cat. No.	Hub Size (in.)	Cover Only
ASLB-XL4	1 1/4	ASLBXL4CV*
ASLB-XL6	2	ASLBXL6CV*

Note: Raintight when used with appropriate Red•Dot® covers.

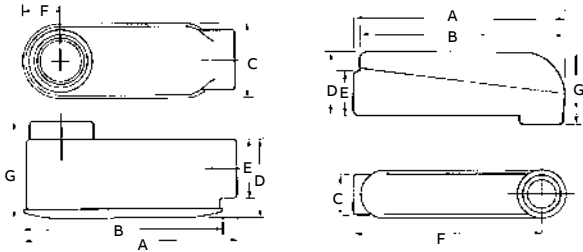
ASLB and ASLB-XL Dimensions



ASLB & ASLB-XL

Size (in.)	Dimensions (in.)						CI
	A	B	C	D	E	F	
ASLB							
1/2	3 1/16	2 3/4	1 1/4	1 9/16	1 1/8	1 1/16	2.0
3/4	3 15/16	3 1/4	1 1/2	1 3/4	1 3/8	3/4	3.0
1	4 1/4	3 7/8	1 3/4	2 3/16	1 3/4	1 1/16	5.5
1 1/4	5 1/2	5 1/4	2 3/8	3	2 3/16	1 1/4	13.0
1 1/2	6 1/4	6	2 7/16	3 1/4	2 7/16	1 1/2	18.8
2	6 3/4	6 1/2	3 1/8	4	2 7/8	1 5/8	38.8
ASLB-XL							
1 1/4	8	7 1/2	2 1/2	2 3/4	2 7/32	1 5/16	24.5
2	9 15/16	9 3/4	3 3/8	3 3/4	2 15/16	1 5/8	58.0

SALB and MALB Dimensions



SALB

MALB

Size (in.)	Dimensions (in.)							CI
	A	B	C	D	E	F	G	
SALB								
2 1/2	13	12 5/8	4 13/16	4 1/2	3 3/8	2 1/4	5 7/8	190
3	13	12 5/8	4 1/2	5 1/4	4 1/8	2 7/16	6 7/16	190
3 1/2	16 1/2	15 3/8	5 1/2	6 1/4	5 1/8	2 3/4	7 9/16	366
4	16 1/2	15 3/8	5 1/2	6 1/4	5 1/8	2 3/4	7 9/16	366
MALB								
1	9 5/8	9 1/16	2 1/2	2 3/4	2 1/16	8 1/2	3 5/8	40
1 1/4	9 5/8	9 1/16	2 1/2	2 3/4	2 1/16	8 1/2	3 5/8	40
1 1/2	14 17/32	14 1/4	2 3/4	4	2 13/16	13	5 7/32	128
2	14 17/32	14 1/4	2 3/4	4	2 13/16	13	5 7/32	128
2 1/2	21 17/32	21 19/32	4 1/2	5 5/8	4 1/8	18	7 23/32	398
3	21 17/32	21 19/32	4 1/2	5 5/8	4 1/8	18	7 23/32	398
3 1/2	28 5/8	28 17/32	5 1/2	6 1/2	5 1/8	24	9 23/32	766.7
4	28 5/8	28 17/32	5 1/2	6 1/2	5 1/8	24	9 23/32	766.7

Zinc Concrete Slab Inserts, Elbows and Plugs

Application

- Permits in-slab ceiling drops and floor mounts in poured concrete
- Provides flush threaded conduit hub for mounting, pulling and future access to conduit systems
- Design permits prefabrication of in-slab conduit system

Features/Benefits

- Flush design leaves no broken or bent stubs for easy removal of undamaged forms
- Flush design permits simplified in-slab work
- Flush design leaves a neat, uncluttered job
- Offered in straight ES configuration for straight-through conduit runs and mounting of floor boxes in slabs over 6" thick
- Offered in ESL configuration to eliminate bending of conduit in slabs over 4" thick
- Precision-cast and machined surfaces permit safer wire pulling
- ZAMAK 3 Zinc can be embedded in concrete

Standard Materials:

- Die-cast zinc alloy ZAMAK 3. Certified by the Certified Zinc Alloy Plan (CZAP)

Standard Finish:

- Natural

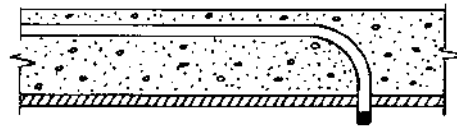
Compliances:

- UL® Listed
- CSA Certified

Sample Specifications:

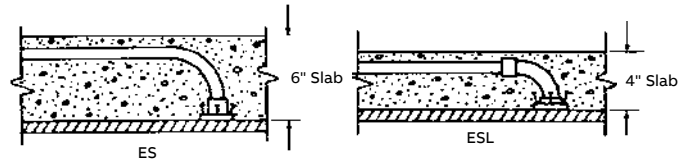
- Concrete Slab Inserts shall be die-cast Zinc Alloy* ZAMAK 3. All conduit stops shall be coined and free of rough edges. Service Entrance Fittings shall be Red•Dot® Catalog No. _____

* Certified by the American Die Casting Institute.



Old Way

Conduit running in a cement slab is bent 90° to run through a hole drilled in the form. Drilling takes time and damages the form. Stripping form often damages conduit stubs. Varying length of stubs requires individual measuring and cutting of conduit drops.



Red-Dot® Way

Conduit running in a cement slab is attached to a 90° Concrete slab insert or conduit is bent 90° and is threaded to a straight insert. Nail or screw fitting to wood or metal forms. After concrete is poured and forms stripped, conduit drops quickly into fittings from floor below. Drops are easily measured from ceiling line to switch or outlet height and cut in uniform lengths.



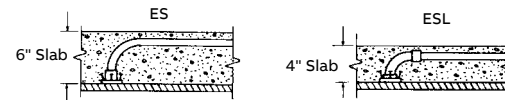
ESL

ES

Threaded Rigid/IMC Conduit Inserts

Concrete slab inserts permit in-slab ceiling drops and floor mounts in poured concrete.

- For Rigid and IMC
- Slab insert is nailed to form prior to pour
- Removable seal keeps threads cement free
- ESL eliminates:
 - Bends in 4" concrete slabs
 - Damage to form
 - Cutting off conduit stubs
- UL® Listed, CSA Certified



Cat. No.	Hub Size (in.)
Straight	
ES-1	1/2
ES-2	3/4
ES-3	1
90°	
ESL-1	1/2
ESL-2	3/4
ESL-3	1

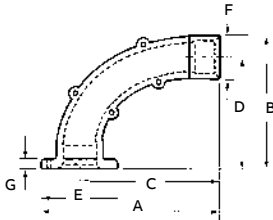
Elbows and Plugs

Female-to-Female Aluminum Elbows



Cat. No.	Cat. No.	Hub Size (in.)
Corner Rigid IMC	EMT	
ACE-1	BCE-1	1/2
ACE-2	BCE-2	3/4
Pulling Rigid IMC	EMT	
APEF-1	BPEF-1	1/2
APEF-2	BPEF-2	3/4

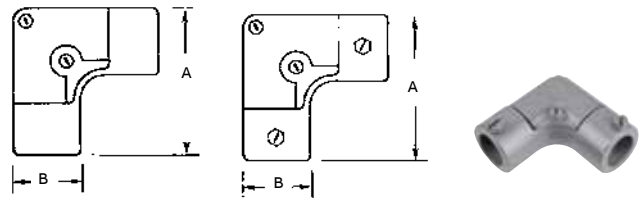
ESL Dimensions



ESL

Cat. No.	Size (in.)	Dimensions (in.)						
		A	B	C	D	E	F	G
ESL-1	1/2	4 ²⁷ / ₃₂	3 ⁴⁵ / ₆₄	3 ²⁹ / ₃₂	3 ³ / ₁₆	1 ⁷ / ₈	1 ¹ / ₃₂	3/4
ESL-2	3/4	5 ¹¹ / ₁₆	3 ²³ / ₃₂	4 ¹ / ₈	3 ³ / ₃₂	2 ¹ / ₈	1 ¹ / ₄	3/4
ESL-3	1	5 ⁵ / ₃₂	3 ³ / ₄	3 ¹⁵ / ₁₆	2 ⁶³ / ₆₄	2 ⁷ / ₁₆	1 ¹⁷ / ₃₂	3/4

ACE and BCE Dimensions



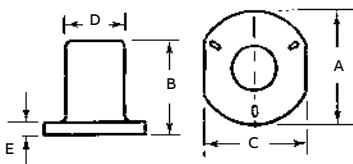
ACE

BCE

BCE

Size (in.)	Dimensions (in.)	
	A	B
1/2	2 ³ / ₈	1 ¹ / ₈
3/4	2 ²¹ / ₃₂	1 ⁵ / ₁₆

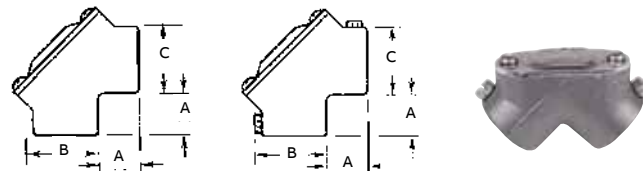
ES Dimensions



ES

Cat. No.	Size (in.)	Dimensions (in.)				
		A	B	C	D	E
ES-1	1/2	1 ⁹ / ₁₆	1 ¹ / ₁₆	1 ²³ / ₃₂	1 ¹ / ₃₂	3/4
ES-2	3/4	2 ¹¹ / ₆₄	1 ⁵ / ₈	1 ³¹ / ₃₂	1 ¹ / ₄	3/4
ES-3	1	2 ⁹ / ₁₆	2	2 ⁵ / ₁₆	1 ¹⁷ / ₃₂	3/4

APEF and BPEF Dimensions



APEF

BPEF

BPEF

Size (in.)	Dimensions (in.)		
	A	B	C
1/2	1 ¹ / ₁₆	7/32	1 ¹ / ₈
3/4	1 ³ / ₁₆	9/16	1 ²³ / ₆₄

Additional information

We reserve the right to make technical changes or modify the contents of this document without prior notice. With regard to purchase orders, the agreed particulars shall prevail. ABB AG does not accept any responsibility whatsoever for potential errors or possible lack of information in this document.

We reserve all rights in this document and in the subject matter and illustrations contained therein. Any reproduction, disclosure to third parties or utilisation of its contents – in whole or in parts – is forbidden without prior written consent of ABB AG.



—
US

ABB Installation Products
Electrification Products division
860 Ridge Lake Blvd.
Memphis, TN 38120
+1 901-252-5000

tnb.abb.com