

Screw Cover Enclosures

Application -

Designed for use as electrical junction boxes, terminal wiring boxes, instrument housings, and electrical control enclosures. Provides protection from dust, oil and water. For installation information, consult our Installation Manual at www.saginawcontrol.com.

Construction -

- 0.063" carbon steel.
- Seams continuously welded and ground smooth, no holes or knockouts.
- Captivated cover screws thread into sealed wells.
- Oil resistant gasket.
- Standoffs provided for mounting optional sub-panels.

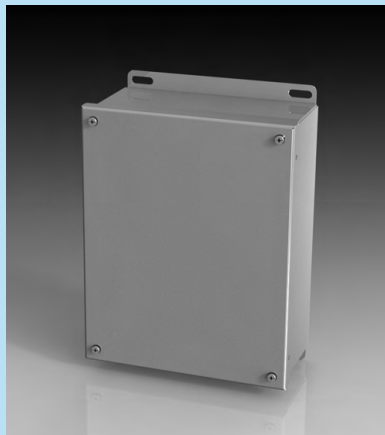
Finish -

ANSI-61 gray powder coated inside and out. Optional sub-panels powder coated white.

IS4 - Industry Standards -

NEMA Type 3R, 4, 12 & Type 13
UL Listed Type 3R, 4 & 12
CSA Type 3R, 4 & 12
IEC 60529 IP66

***Special Instructions apply for IS3, IS4 and IS6 to maintain the environmental rating of Type 3R for these parts. See the Special Instructions on the Industry Standards page in the Technical Information Section.



SCREW COVER ENCLOSURES

ENCLOSURE PRODUCT CODE A1						SUB-PANEL (P3)			
Catalog No.	Height (A)	Width (B)	Depth (C)	Industry Standard	List Price	Catalog No.	Panel Height (D)	Panel Width (E)	List Price
SCE-404SC	4.13	4.00	3.00	IS4	37.62	No Panel			
SCE-4044SC	4.13	4.00	4.00	IS4	37.62	No Panel			
SCE-604SC	6.13	4.00	3.00	IS4	42.64	SCE-6P4	4.88	2.88	3.01
SCE-6044SC	6.13	4.00	4.00	IS4	47.65	SCE-6P4	4.88	2.88	3.01
SCE-606SC	6.13	6.00	4.00	IS4	50.17	SCE-6P6	4.88	4.88	3.61
SCE-806SC	8.13	6.00	3.50	IS4	52.68	SCE-8P6	6.75	4.88	4.17
SCE-8066SC	8.13	6.00	6.00	IS4	60.19	SCE-8P6	6.75	4.88	4.17
SCE-808SC	8.13	8.00	4.00	IS4	60.19	SCE-8P8	6.75	6.88	4.89
SCE-1008SC	10.13	8.00	4.00	IS4	65.22	SCE-10P8	8.75	6.88	5.70
SCE-10086SC	10.13	8.00	6.00	IS4	73.99	SCE-10P8	8.75	6.88	5.70
SCE-1010SC	10.13	10.00	4.00	IS4	72.73	SCE-10P10	8.75	8.88	6.73
SCE-10106SC	10.13	10.00	6.00	IS4	81.51	SCE-10P10	8.75	8.88	6.73
SCE-1210SC	12.13	10.00	5.00	IS4	82.76	SCE-12P10	10.75	8.88	7.72
SCE-121010SC	12.13	10.00	10.00	IS4	125.41	SCE-12P10	10.75	8.88	7.72
SCE-1212SC	12.13	12.00	6.00	IS4	96.56	SCE-12P12	10.75	10.88	9.08
SCE-1412SC	14.13	12.00	6.00	IS4	105.34	SCE-14P12	12.75	10.88	10.13
SCE-1614SC	16.13	14.00	6.00	IS4	122.89	SCE-16P14	14.75	12.88	19.95

Phone (989) 799-6871
Fax (989) 799-4524

