

Continuous Hinge Enclosures

Application -

Designed for use as electrical junction boxes, terminal wiring boxes, instrument housings, and electrical control enclosures. Provides protection from dust, dirt, oil and water. For installation information, consult our Installation Manual at www.saginawcontrol.com.

Construction -

- 0.063" carbon steel.
- Seams continuously welded and ground smooth, no holes or knockouts.
- Bolt-on continuous hinge with stainless steel pin.
- Stainless steel external screw clamps are quick and easy to operate.
- Oil resistant gasket.
- Standoffs provided for mounting optional sub-panels.
- Welded mounting provision top and bottom of back.
- Ground stud on door and body.

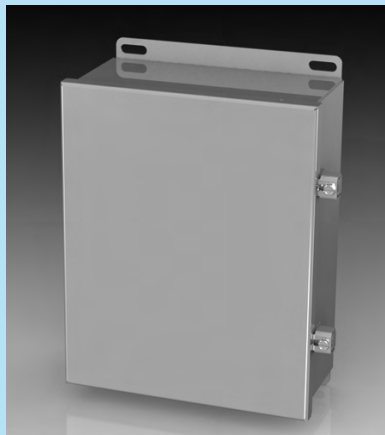
Finish -

ANSI-61 gray powder coated inside and out. Optional sub-panels powder coated white.

IS4 - Industry Standards -

NEMA Type 3R, 4, 12 & Type 13
UL Listed Type 3R, 4 & 12
CSA Type 3R, 4 & 12
IEC 60529 IP66

***Special Instructions apply for IS3, IS4 and IS6 to maintain the environmental rating of Type 3R for these parts. See the Special Instructions on the Industry Standards page in the Technical Information Section.



CONTINUOUS HINGE ENCLOSURES

ENCLOSURE PRODUCT CODE A1						SUB-PANEL (P3)			
Catalog No.	Height (A)	Width (B)	Depth (C)	Industry Standard	List Price	Catalog No.	Panel Height (D)	Panel Width (E)	List Price
SCE-404CHNF	4.13	4.00	3.00	IS4	37.68	No Panel			
SCE-4044CHNF	4.13	4.00	4.00	IS4	38.97	No Panel			
SCE-604CHNF	6.13	4.00	3.00	IS4	42.36	SCE-6P4	4.88	2.88	3.01
SCE-6044CHNF	6.13	4.00	4.00	IS4	45.48	SCE-6P4	4.88	2.88	3.01
SCE-606CHNF	6.13	6.00	4.00	IS4	49.37	SCE-6P6	4.88	4.88	3.61
SCE-806CHNF	8.13	6.00	3.50	IS4	53.27	SCE-8P6	6.75	4.88	4.17
SCE-8066CHNF	8.13	6.00	6.00	IS4	62.66	SCE-8P6	6.75	4.88	4.17
SCE-808CHNF	8.13	8.00	4.00	IS4	59.78	SCE-8P8	6.75	6.88	4.89
SCE-8086CHNF	8.13	8.00	6.00	IS4	68.69	SCE-8P8	6.75	6.88	4.89
SCE-1008CHNF	10.13	8.00	4.00	IS4	69.39	SCE-10P8	8.75	6.88	5.70
SCE-1008CHSNF	10.13	8.00	4.00	IS4	73.30	SCE-10P8	8.75	6.88	5.70
SCE-10086CHNF	10.13	8.00	6.00	IS4	79.24	SCE-10P8	8.75	6.88	5.70
SCE-10106CHNF	10.13	10.00	6.00	IS4	80.55	SCE-10P10	8.75	8.88	6.73
SCE-12064CHNF	12.13	6.00	4.00	IS4	63.66	SCE-12P6	10.75	4.88	5.35
SCE-1210CHNF	12.13	10.00	5.00	IS4	87.29	SCE-12P10	10.75	8.88	7.72
SCE-1210CHSNF	12.13	10.00	5.00	IS4	89.33	SCE-12P10	10.75	8.88	7.72
SCE-12106CHNF	12.13	10.00	6.00	IS4	91.96	SCE-12P10	10.75	8.88	7.72
SCE-12108CHNF	12.13	10.00	8.00	IS4	98.74	SCE-12P10	10.75	8.88	7.72
SCE-1212CHNF	12.13	12.00	6.00	IS4	101.32	SCE-12P12	10.75	10.88	9.08
SCE-14086CHNF	14.13	8.00	6.00	IS4	87.06	SCE-14P8	12.75	6.88	7.39
SCE-1412CHNF	14.13	12.00	6.00	IS4	112.50	SCE-14P12	12.75	10.88	10.13
SCE-1412CHSNF	14.13	12.00	6.00	IS4	118.13	SCE-14P12	12.75	10.88	10.13
SCE-14128CHNF	14.13	12.00	8.00	IS4	119.01	SCE-14P12	12.75	10.88	10.13
SCE-16106CHNF	16.13	10.00	6.00	IS4	102.65	SCE-16P10	14.75	8.88	9.90
SCE-1614CHNF	16.13	14.00	6.00	IS4	131.71	SCE-16P14	14.75	12.88	19.95
SCE-1614CHSNF	16.13	14.00	6.00	IS4	138.30	SCE-16P14	14.75	12.88	19.95
SCE-16148CHNF	16.13	14.00	8.00	IS4	143.66	SCE-16P14	14.75	12.88	19.95
SCE-161410CHNF	16.13	14.00	10.00	IS4	150.70	SCE-16P14	14.75	12.88	19.95

Catalog numbers containing an "S" are hinged on the short side.

Phone (989) 799-6871
Fax (989) 799-4524

