

Enviroline® Series Junction Enclosures

Application -

Designed to house electrical controls, instruments and components in areas, which may be regularly hosed down or are in very wet or oily conditions. Provides protection from dust, dirt, oil, and water. For installation information, consult our Installation Manual at www.saginawcontrol.com.

Construction -

- 0.063" carbon steel.
- Seams continuously welded and ground smooth.
- Flange trough collar around all sides of door opening.
- Oil-resistant gasket.
- Standoffs provided for mounting optional sub-panels.
- Removable hinge.
- Doors open 180 degrees.
- Black mini quarter turn latches.
- Latches are opened or closed with a screwdriver.
- Sealing washers and hole plugs included.
- Ground stud on door & body.
- Mounting feet included.

Finish -

ANSI-61 gray powder coated inside and out. Optional sub-panels powder coated white.

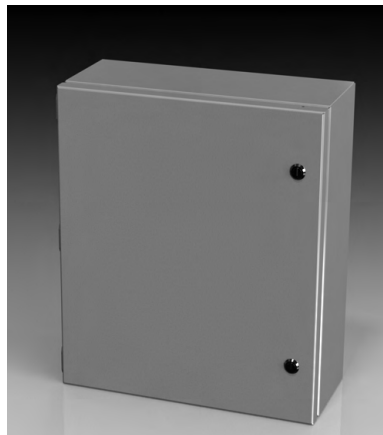
IS4 - Industry Standards -

NEMA Type 3R, 4, 12 & Type 13
UL Listed Type 3R, 4 & 12
CSA Type 3R, 4 & 12
IEC 60529 IP66

***Special Instructions apply for IS3, IS4 and IS6 to maintain the environmental rating of Type 3R for these parts. See the Special Instructions on the Industry Standards page in the Technical Information Section.

ENVIROLINE® SERIES JUNCTION ENCLOSURES

ENCLOSURE PRODUCT CODE E1						SUB-PANEL (P3)			
Catalog No.	Height (A)	Width (B)	Depth (C)	Industry Standard	List Price	Catalog No.	Panel Height (D)	Panel Width (E)	List Price
SCE-604ELJ	6.00	4.00	4.00	IS4	41.16	SCE-6P4J	5.00	3.00	3.02
SCE-606ELJ	6.00	6.00	4.00	IS4	47.98	SCE-6P6J	5.00	5.00	3.62
SCE-806ELJ	8.00	6.00	4.00	IS4	51.88	SCE-8P6J	7.00	5.00	4.17
SCE-8066ELJ	8.00	6.00	6.00	IS4	61.48	SCE-8P6J	7.00	5.00	4.17
SCE-808ELJ	8.00	8.00	4.00	IS4	63.72	SCE-8P8J	7.00	7.00	4.89
SCE-8086ELJ	8.00	8.00	6.00	IS4	68.18	SCE-8P8J	7.00	7.00	4.89
SCE-1008ELJ	10.00	8.00	4.00	IS4	70.76	SCE-10P8J	9.00	7.00	5.70
SCE-10086ELJ	10.00	8.00	6.00	IS4	79.12	SCE-10P8J	9.00	7.00	5.70
SCE-10106ELJ	10.00	10.00	6.00	IS4	83.56	SCE-10P10J	9.00	9.00	6.73
SCE-1210ELJ	12.00	10.00	6.00	IS4	86.48	SCE-12P10J	11.00	9.00	7.72
SCE-12108ELJ	12.00	10.00	8.00	IS4	98.72	SCE-12P10J	11.00	9.00	7.72
SCE-1212ELJ	12.00	12.00	6.00	IS4	100.96	SCE-12P12J	11.00	11.00	9.08
SCE-1412ELJ	14.00	12.00	6.00	IS4	111.20	SCE-14P12J	13.00	11.00	10.13
SCE-14128ELJ	14.00	12.00	8.00	IS4	118.44	SCE-14P12J	13.00	11.00	10.13
SCE-1614ELJ	16.00	14.00	6.00	IS4	130.82	SCE-16P14J	15.00	13.00	19.96
SCE-16148ELJ	16.00	14.00	8.00	IS4	143.42	SCE-16P14J	15.00	13.00	19.96
SCE-20166ELJ	20.00	16.00	6.00	IS4	151.40	SCE-20P16J	19.00	15.00	30.40
SCE-20168ELJ	20.00	16.00	8.00	IS4	157.76	SCE-20P16J	19.00	15.00	30.40
SCE-201610ELJ	20.00	16.00	10.00	IS4	185.13	SCE-20P16J	19.00	15.00	30.40
SCE-20206ELJ	20.00	20.00	6.00	IS4	168.36	SCE-20P20J	19.00	19.00	35.44
SCE-20208ELJ	20.00	20.00	8.00	IS4	178.20	SCE-20P20J	19.00	19.00	35.44
SCE-202010ELJ	20.00	20.00	10.00	IS4	187.50	SCE-20P20J	19.00	19.00	35.44



Phone (989) 799-6871
Fax (989) 799-4524

