

Pushbutton Enclosures for 22.5 mm Pushbuttons

Application -

Designed to offer protection for miniature oil-tight pushbuttons, switches, and pilot lights from dust, water, dirt and oil. For installation information, consult our Installation Manual at www.saginawcontrol.com.

Construction -

- 0.063" carbon steel.
- Continuously welded seams.
- Captivated cover screws thread into sealed wells.
- 4-way miniature pushbutton holes accept all brands of oil-tight pushbuttons, switches and pilot lights. Hole diameter is 0.87" (22.5 mm).
- Immediate removal of cover is permitted.
- Oil-resistant gasket.
- Welded mounting provision top and bottom of back.

Finish -

ANSI-61 gray powder coated inside and out.

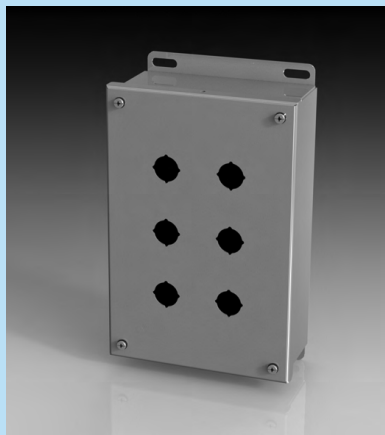
IS2 - Industry Standards -

NEMA Type 4, 12 & Type 13

UL Listed Type 4 & 12

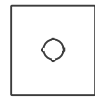
CSA Type 4 & 12

IEC 60529 IP66



PUSHBUTTON ENCLOSURES FOR 22.5 mm PUSHBUTTONS

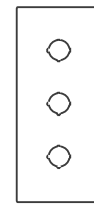
ENCLOSURE PRODUCT CODE A1					
Catalog No.	Height (A)	Width (B)	Depth (C)	Industry Standard	List Price
SCE-1PBGX	3.25	3.25	3.50	IS2	50.17
SCE-2PBGX	5.13	3.25	3.50	IS2	55.18
SCE-3PBGX	7.00	3.25	3.50	IS2	61.45
SCE-4PBGX	8.88	3.25	3.50	IS2	67.71
SCE-6PBGX	8.50	6.00	4.25	IS2	86.52
SCE-9PBGX	8.50	6.50	4.25	IS2	95.31
SCE-12PBGX	10.38	6.25	4.25	IS2	106.60



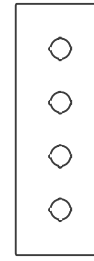
SCE-1PBGX



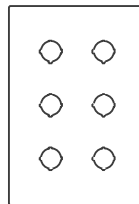
SCE-2PBGX



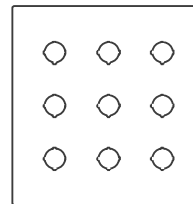
SCE-3PBGX



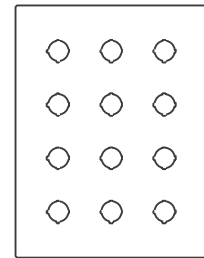
SCE-4PBGX



SCE-6PBGX



SCE-9PBGX



SCE-12PBGX

Phone (989) 799-6871

Fax (989) 799-4524

