

Extra Deep 22.5 mm Pushbutton Enclosures

Application -

Designed to offer protection for oil-tight pushbuttons, switches, and pilot lights from dust, water, dirt and oil. For installation information, consult our Installation Manual at www.saginawcontrol.com.

Construction -

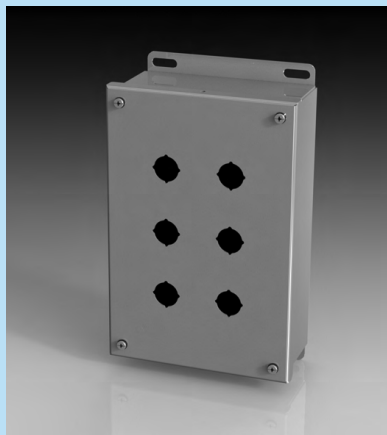
- 0.063" carbon steel.
- Continuously welded seams.
- Captivated cover screws thread into sealed wells.
- 4-way pushbutton holes accept all brands of oil-tight pushbuttons, switches and pilot lights. Hole diameter is 0.87" (22.5 mm).
- Immediate removal of cover is permitted.
- Oil-resistant gasket.
- Welded mounting provision top and bottom of back.

Finish -

ANSI-61 gray powder coated inside and out.

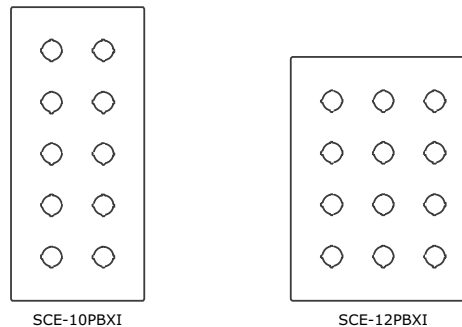
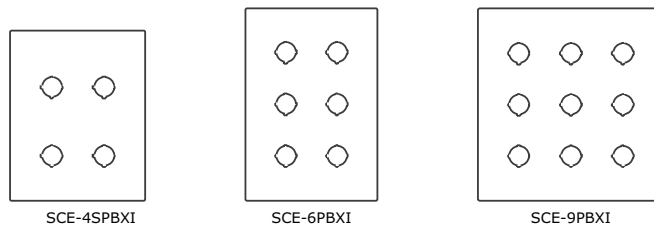
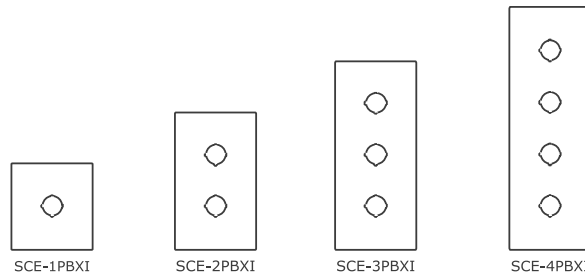
IS2 - Industry Standards -

NEMA Type 4, 12 & Type 23
 UL Listed Type 4 & 12
 CSA Type 4 & 12
 IEC 60529 IP66



EXTRA DEEP 22.5 mm PUSHBUTTON ENCLOSURES

| ENCLOSURE PRODUCT CODE A1 | | | | | |
|---------------------------|------------|-----------|-----------|-------------------|------------|
| Catalog No. | Height (A) | Width (B) | Depth (C) | Industry Standard | List Price |
| SCE-1PBXI | 4.00 | 4.00 | 4.75 | IS2 | 56.43 |
| SCE-2PBXI | 6.00 | 4.00 | 4.75 | IS2 | 65.22 |
| SCE-3PBXI | 8.00 | 4.00 | 4.75 | IS2 | 73.99 |
| SCE-4PBXI | 10.00 | 4.00 | 4.75 | IS2 | 81.51 |
| SCE-4SPBXI | 7.25 | 6.25 | 4.75 | IS2 | 82.76 |
| SCE-6PBXI | 9.50 | 6.25 | 4.75 | IS2 | 95.31 |
| SCE-9PBXI | 9.50 | 8.50 | 4.75 | IS2 | 107.85 |
| SCE-10PBXI | 14.00 | 6.25 | 4.75 | IS2 | 117.88 |
| SCE-12PBXI | 11.75 | 8.50 | 4.75 | IS2 | 124.15 |



Phone (989) 799-6871
 Fax (989) 799-4524



1 Operator System Enclosures
 2 Wall-Mount Enclosures
 3 Free-Standing & Floor-Mounted Enclosures
 4 Modular Enclosures
 5 Operator System Enclosures (Stainless Steel)
 6 Wall-Mount Enclosures (Stainless Steel)
 7 Free-Standing & Floor-Mounted Enclosures (Stainless Steel)
 8 Non-Metallic Enclosures
 9 Accessories
 10 Technical Information
 11 Index