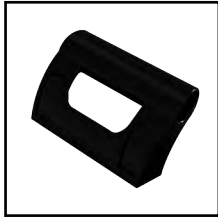
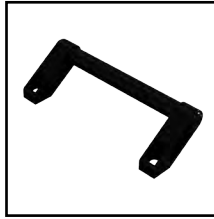


Catalog No.	Height (A)	Width (B)	Depth (C)	QTY per Kit	Product Code	List Price
SCE-HMIPH5	5.28	2.57	2.84	1	P2	25.16
SCE-AUHK	12.00	4.27	3.15	1	P2	35.94

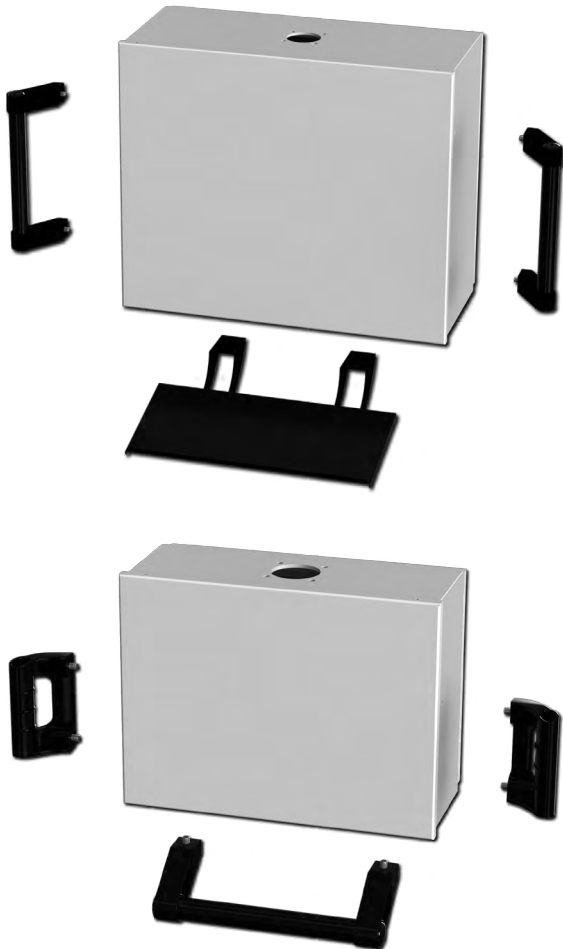


SCE-HMIPH5



SCE-AUHK

Catalog No.	Height (A)	Width (B)	Depth (C)	QTY per Kit	Product Code	List Price
SCE-HMICP	3.50	3.50	0.08	1	P2	43.00



## HMI ACCESSORIES

### HMI Pull Handle

Designed for use on HMI enclosures. Handle is a steel tube plastic coated black with black molded polyamide plastic end stays. Mounting hardware is included.

### HMI Cover Plate

Gasketed cover plate for use on HMI enclosures when mounting cutout is not needed. Made of heavy gauge steel and powder coated RAL 7035 Gray.