

## GENERAL ACCESSORIES

### LED Light Fixture

#### Application -

LED light fixture is designed to provide interior lighting for an enclosure. Can be mounted to light channels in the top of an enclosure or on the front flange of most enclosures.

#### Construction -

- Door activated adjustable switch, switch can be removed and relocated.
- Terminal block on each end of fixture, making it easy to wire and daisy chain multiple lights continuously.
- LED bulb with PVC frosted white protective light diffuser included.
- Housing made from steel and powder coated white.
- Units with convenience receptacle outlet are 120 VAC with ground 50/60 Hz. Without convenience receptacle outlet 100 to 240 VAC 50/60 Hz.
- 4000K Frosted White
- 18 inch 750 Lumens
- 24 inch 900 Lumens
- 18 inch 24VDC 500 Lumens

#### IS24 - Industry Standards -

UL Component Recognized

\*Replacements Bulb see page 405

### Light Switch Mounting Bracket

Designed to remote mount the door activated light switch when space is limited. Light Switch Mounting Bracket may be used with SCE-LF18, SCE-LF18NO, SCE-LF24 & SCE-LF24NO. For installation information, consult our Installation Manual at [www.saginawcontrol.com](http://www.saginawcontrol.com).

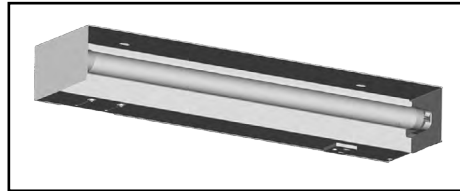
#### IS24 - Industry Standards -

UL Component Recognized

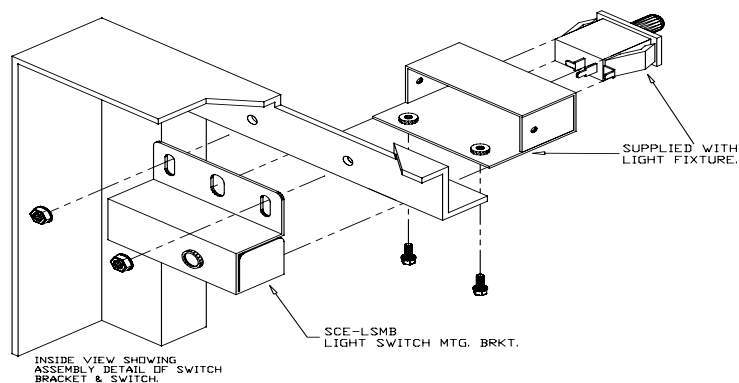
### Full Light Switch Assembly

Designed to remote mount the light switch when space is limited.

Catalog No.	Height (A)	Width (B)	Depth (C)	AMP	VAC	Hz	Product Code	List Price
SCE-LF18	2.75	18.18	4.00	0.105	100-125	50/60	P2	206.55
SCE-LF24	2.75	24.18	4.00	0.105	100-125	50/60	P2	218.03
SCE-LF18NO (No Outlet)	2.75	18.18	4.00	0.105	100-240	50/60	P2	185.90
SCE-LF24NO (No Outlet)	2.75	24.18	4.00	0.105	100-240	50/60	P2	196.72
SCE-LF1824VDC (No Outlet)	2.75	18.18	4.00	0.300	24VDC	----	P2	195.90



Catalog No.	Height (A)	Width (B)	Depth (C)	Product Code	List Price
SCE-LSMB	2.00	2.68	1.00	P2	25.56



Catalog No.	Product Code	List Price
SCE-LSA	P2	38.34



Phone (989) 799-6871  
Fax (989) 799-4524

