

HMI Enclosures & Accessories

Application -

Designed to house Human-Machine Interfaces (HMI) and electrical and electronic controls, instruments and components. Provides a degree of protection from dust, oil and water.

Construction -

- 0.075" carbon steel.
- Seams continuously welded and ground smooth.
- Reinforced with mounting provisions for suspension or pedestal mounting.
- Concealed hinge access door with provisions for sub-panel.
- Removable front cover for easy installation of cutouts, HMI and components.
- Oil-resistant gasket.
- Black quarter turn latches.
- Latches are opened or closed with a screwdriver.
- Ground studs on door and body.

Finish -

RAL 7035 gray powder coated inside and out. Optional sub-panels powder coated white.

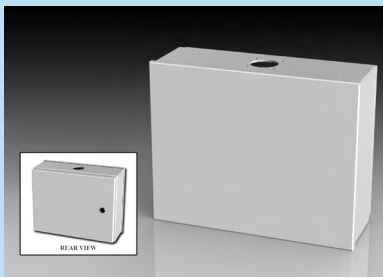
Options -

- Tamper-resistant latches
- Pull handles
- Keyboard shelf

IS4 - Industry Standards -

NEMA Type 3R, 4, 12 & Type 13
UL Listed Type 3R, 4 & 12
CSA Type 3R, 4 & 12
IEC 60529 IP66

***Special Instructions apply for IS3, IS4 and IS6 to maintain the environmental rating of Type 3R for these parts. See the Special Instructions on the Industry Standards page in the Technical Information Section.



HMI ENCLOSURES

ENCLOSURE PRODUCT CODE C2						SUB-PANEL (P3)			
Catalog No.	Height (A)	Width (B)	Depth (C)	Industry Standard	List Price	Catalog No.	Panel Height (D)	Panel Width (E)	List Price
SCE-12HMI1606LP	12.00	16.00	6.00	IS4	357.90	SCE-12P10	10.75	8.88	7.72
SCE-12HMI1610LP	12.00	16.00	10.00	IS4	380.23	SCE-12P10	10.75	8.88	7.72
SCE-14HMI1806LP	14.00	18.00	6.00	IS4	389.31	SCE-14P12	12.75	10.88	10.13
SCE-14HMI1810LP	14.00	18.00	10.00	IS4	412.33	SCE-14P12	12.75	10.88	10.13
SCE-16HMI2006LP	16.00	20.00	6.00	IS4	421.93	SCE-16P14	14.75	12.88	19.95
SCE-16HMI2010LP	16.00	20.00	10.00	IS4	445.70	SCE-16P14	14.75	12.88	19.95
SCE-20HMI2406LP	20.00	24.00	6.00	IS4	461.02	SCE-20P18HMI	18.75	16.88	33.23
SCE-20HMI2410LP	20.00	24.00	10.00	IS4	496.94	SCE-20P18HMI	18.75	16.88	33.23

For Reference View



Phone (989) 799-6871
Fax (989) 799-4524

SCE SAGINAW
CONTROL &
ENGINEERING
Your Enclosure Source®