

STAINLESS STEEL HEAVY DUTY FREE-STANDING ENCLOSURES FOR FLANGE-MOUNTED DISCONNECTS TWO-DOOR ENCLOSURES

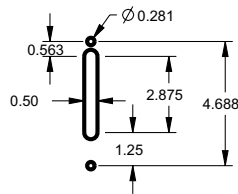
ENCLOSURE PRODUCT CODE S2						SUB-PANEL (P3)			
Catalog No.	Height (A)	Width (B)	Depth (C)	Industry Standard	List Price	Catalog No.	Panel Height (E)	Panel Width (F)	List Price
SCE-72XM5418SS	72.00	53.75	18.00	IS6	9,890.44	SCE-64P52**	60.00	48.00	Included
SCE-72XM6618SS	72.00	65.75	18.00	IS6	11,145.52	SCE-64P64**	60.00	60.00	Included
SCE-72XM7818SS	72.00	77.75	18.00	IS6	12,396.34	SCE-64P76**	60.00	72.00	Included
SCE-72XM7824SS	72.00	77.75	24.00	IS6	13,286.12	SCE-64P76**	60.00	72.00	Included
SCE-84XM7818SS	84.00	77.75	18.00	IS6	13,758.93	SCE-76P76**	72.00	72.00	Included
SCE-84XM7824SS	84.00	77.75	24.00	IS6	13,930.86	SCE-76P76**	72.00	72.00	Included
SCE-90XM7818SS	90.00	77.75	18.00	IS6	14,691.64	SCE-82P76**	78.00	72.00	Included
SCE-90XM7824SS	90.00	77.75	24.00	IS6	15,418.09	SCE-82P76**	78.00	72.00	Included

XM ENCLOSURES

* Add the letter U to the end of the part number for enclosures with a universal disconnect cutout.

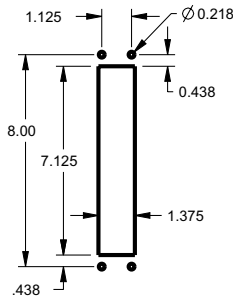
Standard Disconnect cutout provided

D 1



Universal Disconnect cutout

D 7



**Sub-panel included with enclosure.
Replacement panels can be ordered.
Prices found in the accessory section.



Stainless Steel Heavy Duty Free-Standing Enclosures For Flange-Mounted Disconnects

Application -

Designed to house electrical equipment and provide degree of protection from dirt, dust, oil and water and to house most standard type disconnects. For installation information, consult our Installation Manual at www.saginawcontrol.com.

Construction -

- 0.104" stainless steel Type 304.
- Seams continuously welded and ground smooth.
- Flange trough collar around all sides of door opening.
- Body stiffeners in large enclosures for extra rigidity.
- Heavy duty lifting eyes anchor into reinforced top.
- Removable center posts permit easy sub-panel installation.
- Stainless steel concealed hinges.
- Black zinc die cast coinproof/padlocking handle on main door with black zinc die cast padlocking handle on slave doors.
- 3-point latching mechanism.
- Black quarter turn latches as required.
- Panel supports.
- Large removable print pockets.
- Oil-resistant gasket.
- Removable sub-panels mount on collar studs.
- Master door is far right-hand door on all enclosures.
- Defeater on master door requires a screwdriver to open.
- Mechanical interlock activated by master door prevents slave doors from being opened first. Doors can be closed in any order.
- Ground stud on door and body.
- Provisions for light kit.

Disconnect switch (or circuit breaker) and operating mechanism are not furnished with enclosure.

Finish -

#4 brushed finish on all exterior surfaces. Sub-panels powder coated white.

IS6 - Industry Standards -

NEMA Type 3R, 4, 4X, 12 & Type 13
UL Listed Type 3R, 4, 4X & 12
CSA Type 3R, 4, 4X & 12
IEC 60529 IP66

***Special Instructions apply for IS3, IS4 and IS6 to maintain the environmental rating of Type 3R for these parts. See the Special Instructions on the Industry Standards page in the Technical Information Section.