

Series 14 Two-Door Consoles

Application -

Designed for electronic controls and instruments. Equipment can be mounted on the sloping control panel door. Interior components mount to stationary panels. Heavy duty construction provides protection from dirt, oil, dust, and water. For installation information, consult our Installation Manual at www.saginawcontrol.com.

Construction -

- 0.104" carbon steel.
- Sloping control panel door attached with concealed hinge on bottom edge. Door opens to 90 degree.
- Black zinc die cast keylocking/padlocking handles on front and rear doors.
- 3-point latching mechanism.
- Seams continuously welded and ground smooth.
- Oil-resistant gasket on door.
- Optional equipment mounts to horizontal channels welded to sides.
- Flush mounted doors.
- Optional writing desk and top section available.
- Interior print pocket.
- Removable eyebolts in console body.
- Ground stud on door and body.
- Hole plugs provided to seal holes in bottom of enclosure.

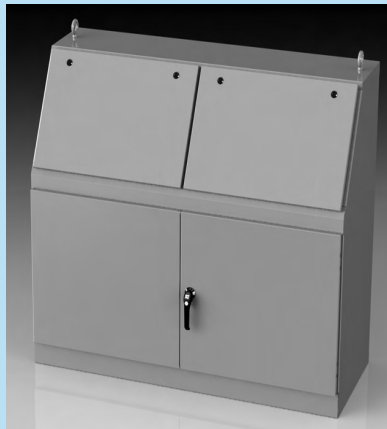
Finish -

ANSI-61 gray powder coated inside and out. Optional panels are powder coated white.

IS3 - Industry Standards -

NEMA Type 3R, 12 & Type 13
UL Listed Type 3R & 12
CSA Type 3R & 12
IEC 60529 IP55

***Special Instructions apply for IS3, IS4 and IS6 to maintain the environmental rating of Type 3R for these parts. See the Special Instructions on the Industry Standards page in the Technical Information Section.



SERIES 14 TWO-DOOR CONSOLES - 48" WIDE

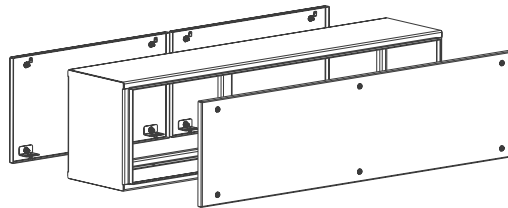
ENCLOSURES							
Catalog No.	Description	Height (A)	Width (B)	Depth (C)	Product Code	Industry Standard	List Price
SCE-1448BD	Console Body	50.00	48.00	23.00	C1	IS3	2,673.68
SCE-1448T	Console Top	16.00	48.00	12.50	C1	IS1	670.95
SCE-1448P2	Half Panel	22.00	41.00		P3	IS1	212.67
SCE-1448P3	Full Panel	42.25	41.00		P3	IS1	336.74
SCE-1448W	Writing Desk	48.00	10.00		P2	IS1	214.61

SERIES 14 TWO-DOOR CONSOLES - 60" WIDE

ENCLOSURES							
Catalog No.	Description	Height (A)	Width (B)	Depth (C)	Product Code	Industry Standard	List Price
SCE-1460BD	Console Body	50.00	60.00	23.00	C1	IS3	2,767.36
SCE-1460T	Console Top	16.00	60.00	12.50	C1	IS1	777.29
SCE-1460P2	Half Panel	22.00	53.00		P3	IS1	245.59
SCE-1460P3	Full Panel	42.25	53.00		P3	IS1	402.57
SCE-1460W	Writing Desk	60.00	10.00		C2	IS1	253.19

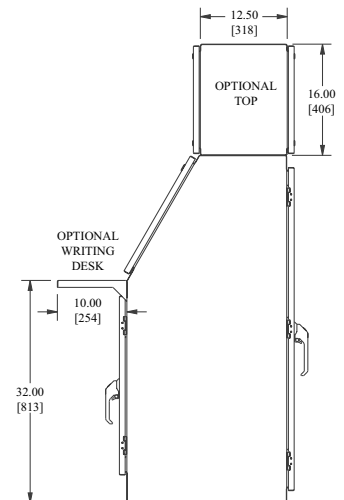
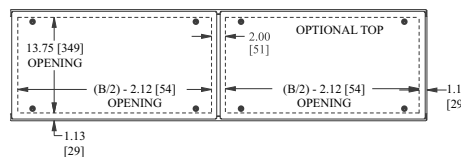
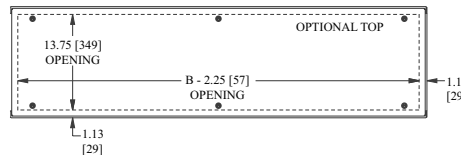
SERIES 14 TWO-DOOR CONSOLES - 72" WIDE

ENCLOSURES							
Catalog No.	Description	Height (A)	Width (B)	Depth (C)	Product Code	Industry Standard	List Price
SCE-1472BD	Console Body	50.00	72.00	23.00	C1	IS3	3,030.68
SCE-1472T	Console Top	16.00	72.00	12.50	C1	IS1	886.17
SCE-1472P3	Full Panel	42.25	65.00		P3	IS1	465.86
SCE-1472W	Writing Desk	72.00	10.00		P2	IS1	291.78



OPTIONAL TOP NOTES:

1. SINGLE FRONT & SINGLE REAR ACCESS PANEL ON ENCLOSURES < 48.00 [1219] WIDE.
2. SINGLE FRONT & TWO REAR ACCESS PANELS ON 48.00 [1219] & 60.00 [1524] WIDE
3. TWO FRONT & TWO REAR ACCESS PANELS ON 72.00 [1829] WIDE.



1 Operator System Enclosures
2 Wall-Mount Enclosures
3 Free-Standing & Floor-Mounted Enclosures
4 Modular Enclosures
5 Operator System Enclosures (Stainless Steel)
6 Wall-Mount Enclosures (Stainless Steel)
7 Free-Standing & Floor-Mounted Enclosures (Stainless Steel)
8 Non-Metallic Enclosures
9 Accessories
10 Technical Information
11 Index