

Series 9 Consoles

Application -

Designed for electronic controls and instruments. Equipment can be mounted on the sloping control panel door. Interior components mount to stationary panels. Provides protection from dirt, oil, dust and water. For installation information, consult our Installation Manual at www.saginawcontrol.com.

Construction -

- 0.075" carbon steel.
- Sloping control panel door attached with concealed hinge on bottom edge.
- Door opens to 90 degree.
- Black zinc die cast keylocking/padlocking handle.
- 3-point latching mechanism.
- Seams continuously welded and ground smooth.
- Oil-resistant gasket on door.
- Interior print pocket.
- Optional back and side panels are mounted on collar studs.
- Removable eyebolts.
- Ground stud on door and body.
- Hole plugs provided to seal holes in bottom of enclosure.

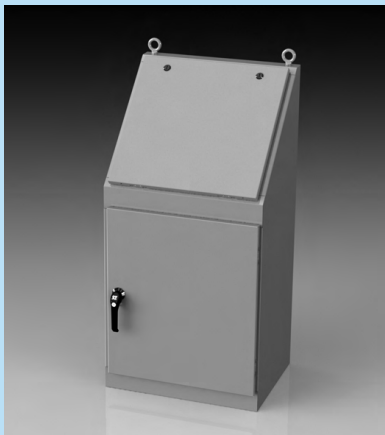
Finish -

ANSI-61 gray powder coated inside and out. Optional panels are powder coated white.

IS3 - Industry Standards -

NEMA Type 3R, 12 & Type 13
UL Listed Type 3R & 12
CSA Type 3R & 12
IEC 60529 IP55

***Special Instructions apply for IS3, IS4 and IS6 to maintain the environmental rating of Type 3R for these parts. See the Special Instructions on the Industry Standards page in the Technical Information Section.



SERIES 9 CONSOLES

ENCLOSURE PRODUCT CODE C1						SUB-PANEL (P3)				
Catalog No.	Height (A)	Width (B)	Depth (C)	Industry Standard	List Price	Catalog Qty No.	Panel Height (D)	Panel Width (E)	List Price	
SCE-924B	48.00	24.00	18.00	IS3	1,210.24	3	SCE-30P20	27.00	17.00	55.70
SCE-936B	48.00	36.00	18.00	IS3	1,486.22	2	SCE-30P20	27.00	17.00	55.70
						1	SCE-30P30 &	27.00	27.00	83.55

Phone (989) 799-6871
Fax (989) 799-4524

