



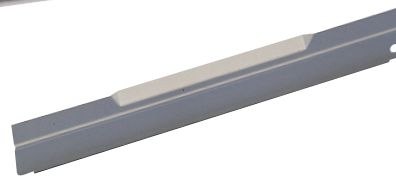
## DRAWER ACCESSORIES

Drawer accessories customize a drawer's interior to your inventory or tools.

- Partitions and dividers can be easily moved and rearranged
- Change interior configurations as inventory or storage requirements change
- Additional accessories not listed are available (For more information, call Customer Service: 800-523-9462)



Drawer Partitions



Drawer Dividers

## DRAWER PARTITIONS

- Partitions span entire width or depth of a drawer
- Slide into slots on drawer walls and are fastened to drawer bottom at pre-punched locations
- Use with dividers to customize drawer interiors
- Includes hardware for fastening to drawer bottom

### Drawer Partitions

DRAWER TYPE	# OF SPACES	APPROX. LENGTH	FITS DRAWER MODELS 20 & 25 1-7/8" (48MM) HT.	FITS DRAWER MODELS 30 & 35 2-7/8" (73MM) HT.	FITS DRAWER MODELS 40 & 45 4-1/2" (114MM) HT.	FITS DRAWER MODELS 50+ 5-1/4" (133MM) HT.
Standard/LW/SV	32	25-1/2" (648mm)	P20*	P30*	P40*	P50*
Extra Wide	51	40-1/2" (1029mm)	P2051	P3051	P4051	P5051
Double Wide	70	55-5/8" (1413mm)	P2070	P3070	P4070	P5070
SL, LW XL & DL (front to back)	24	19" (483mm)	P2024	P3024	P4024	P5024

## DRAWER DIVIDERS

- Use with partitions to subdivide drawer space

NOTE: Dividers that are 9-1/2" (241mm) long and over are supplied with screws for fastening to drawer bottom.

### Standard Drawer Dividers

# OF SPACES	APPROX. LENGTH	USABLE COMPARTMENT WIDTH	FITS DRAWER MODELS 20 & 25 1-7/8" (48MM) HT.	FITS DRAWER MODELS 30 & 35 2-7/8" (73MM) HT.	FITS DRAWER MODELS 40 & 45 4-1/2" (114MM) HT.	FITS DRAWER MODELS 50+ 5-1/4" (133MM) HT.
2	1-1/2" (38mm)	1-1/8" (29mm)	D2002*	D3002*	—	—
3	2-1/4" (57mm)	1-7/8" (48mm)	D2003*	D3003*	—	—
4	3" (76mm)	2-5/8" (67mm)	D2004*	D3004*	D4004*	D5004*
5	3-7/8" (98mm)	3-1/2" (89mm)	D2005*	D3005*	D4005*	D5005*
6	4-5/8" (117mm)	4-1/4" (108mm)	D2006*	D3006*	D4006*	D5006*
7	5-1/2" (140mm)	5-1/8" (130mm)	D2007*	D3007*	D4007*	D5007*
8	6-1/4" (159mm)	5-7/8" (149mm)	D2008*	D3008*	D4008*	D5008*
9	7" (178mm)	6-5/8" (168mm)	D2009*	D3009*	D4009*	D5009*
10	7-7/8" (200mm)	7-1/2" (190mm)	D2010*	D3010*	D4010*	D5010*
11	8-5/8" (219mm)	8-1/4" (210mm)	D2011*	D3011*	D4011*	D5011*
12	9-1/2" (241mm)	9-1/8" (232mm)	D2012*	D3012*	D4012*	D5012*
13	10-1/4" (260mm)	9-7/8" (251mm)	D2013*	D3013*	D4013*	D5013*
14	11" (279mm)	10-5/8" (270mm)	D2014*	D3014*	D4014*	D5014*
15	11-7/8" (302mm)	11-1/2" (292mm)	D2015*	D3015*	D4015*	D5015*
16**	12-5/8" (321mm)	12-1/4" (311mm)	D2016*	D3016*	D4016*	D5016*
17	13-1/2" (343mm)	13-1/8" (333mm)	D2017*	D3017*	D4017*	D5017*
18	14-1/4" (362mm)	13-7/8" (352mm)	D2018*	D3018*	D4018*	D5018*
19	15" (381mm)	14-5/8" (371mm)	D2019*	D3019*	D4019*	D5019*
20	15-7/8" (403mm)	15-1/2" (394mm)	D2020*	D3020*	D4020*	D5020*
21	16-5/8" (422mm)	16-1/4" (413mm)	D2021*	D3021*	D4021*	D5021*
22	17-1/2" (445mm)	17-1/8" (435mm)	D2022*	D3022*	D4022*	D5022*
23**	18" (457mm)	17-7/8" (454mm)	D2023*	D3023*	D4023*	D5023*
24**	19" (483mm)	18-5/8" (473mm)	D2024*	D3024*	D4024*	D5024*
25	19-7/8" (505mm)	19-1/2" (495mm)	D2025*	D3025*	D4025*	D5025*
26	20-5/8" (524mm)	20-1/4" (514mm)	D2026*	D3026*	D4026*	D5026*
27	21-1/2" (546mm)	21-1/8" (537mm)	D2027*	D3027*	D4027*	D5027*
28	22-1/4" (565mm)	21-7/8" (556mm)	D2028*	D3028*	D4028*	D5028*
29	23" (584mm)	22-5/8" (575mm)	D2029*	D3029*	D4029*	D5029*
32***	25-3/8" (645mm)	25-1/8" (638mm)	DS2032	DS3032	DS4032	DS5032



\*Stanley® Vidmar® Quick Ship products \*\*Also available in straight dividers \*\*\*Only available in straight dividers