

# DIAL INDICATORS

## 25 DIAL INDICATORS

AGD GROUP 2  
RANGES UP TO 1" AND 25MM



These indicators have a shockless, hardened steel gear train and jewel bearings, except where noted. They are furnished with a lug-on-center back. Antimagnetic mechanism is optional for all models. Special non-shock mechanism is available for all models except 25-109, 25-209 and 25-116. For more information on these and other attachments, accessories and contact points, refer to the end of the AGD Dial Indicator listings. For dial styles, see previous pages.

If lift lever is desired, indicator must be ordered with case stem cap.

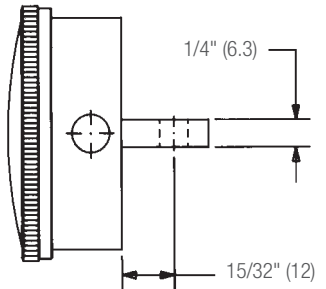
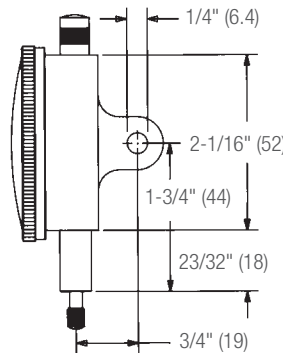
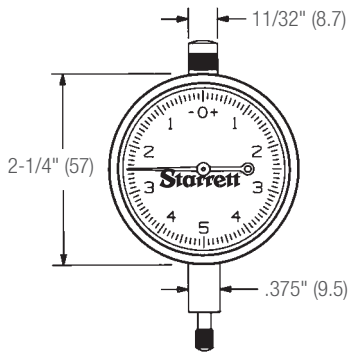


25-111J

25-161J

### 25 Dial Indicators with Jewel Bearings

Graduation	Range One Rev.	Total	Dial Reading	Stem Dia.	Cat. No.	EDP
0.001mm	0.1mm	0.25mm	0-50-0	.375" (9.5mm)	25-151J	67644
					25-151J-8	68646
			0-100	.375" (9.5mm)	25-251J	68118
					25-251J-8	68647
0.002mm	0.2mm	0.5mm	0-10-0	.375" (9.5mm)	25-161J	53250
					25-161J-8	64651
			0-20	.375" (9.5mm)	25-261J	53281
					25-261J-8	64652
0.005mm	0.5mm	1.25mm	0-25-0	.375"	25-171J	68643
0.01mm	1.0mm	2.5mm	0-50-0	.375" (9.5mm)	25-181J	53252
					25-181J-8	64653
			0-100	.375" (9.5mm)	25-281J	53283
					25-281J-8	64654
0.01mm	1.0mm	10mm	0-50-0	.375" (9.5mm)	25-381J	53289
					25-381J-8	64655
			0-100	.375" (9.5mm)	25-481J	53297
					25-481J-8	64656
0.01mm	1.0mm	25mm	0-50-0	.375" (9.5mm)	25-781J	53305
					25-781J-8	64657
			0-100	.375" (9.5mm)	25-881J	53307
					25-881J-8	64658



Free drafting template available for this size.  
Write The L. S. Starrett Co. at:  
121 Crescent Street  
Athol, MA 01331.

25-441J  
with top lift

656-129J  
case stem cap design required  
for use with lift lever  
see page 170



**Starrett**



# DIAL INDICATORS

## 25 Dial Indicators with Jewel Bearings

Graduation	Range One Rev.	Total	Dial Reading	Cat. No.	EDP
.00005"	.006"	.015"	0-3-0	25-109J	53222
			0-6	25-209J	53254
.0001"	.006"	.015"	0-3-0	25-116J	53225
			0-4-0	25-118J	53226
.0001"	.008"	.020"	0-8	25-218J	53257
			0-5-0	25-111J	53223
.0001"	.010"	.025"	0-10	25-211J	53255
			0-5-0	25-511J	53299
.0001"	.010"	.200"	0-10	25-611J	53301
			0-5-0	25-124J	53228
.00025"	.010"	.025"	0-10	25-224J	53259
			0-10-0	25-128J	53230
.00025"	.020"	.050"	0-20	25-228J	53261
			0-10-0	25-134J	53234
.0005"	.020"	.050"	0-20	25-234J	53265
			0-15-0	25-136J	53236
.0005"	.030"	.075"	0-30	25-236J	53267
			0-20-0	25-138J	53238
.0005"	.040"	.100"	0-40	25-238J	53269
			0-25-0	25-131J	53232
.0005"	.050"	.125"		25-231J	53263
			0-50	25-431J	53292
.0005"	.050"	.500"		25-631J	53304
			0-10-0	25-142J	53242
.001"	.020"	.050"	0-20	25-242J	53273
			0-15-0	25-143J	53244
.001"	.030"	.075"	0-30	25-243J	53275
			0-20-0	25-144J	53246
.001"	.040"	.100"	0-40	25-244J	53277
			0-25-0	25-145J	53248
.001"	.050"	.125"	0-50	25-245J	53279
			0-50-0	25-141J	53240
.001"	.100"	.250"	0-100	25-241J	53271
			0-50-0	25-341/5J	53285
.001"	.100"	.500"		25-441/5J	53293
			0-100	25-441/5J W/SLC*	66864
.001"	.100"	1.000"	0-50-0	25-341J	53287
			0-100	25-441J	53295
				25-441/J W/SLC*	66863

## 25 Dial Indicators Inch Reading Models with Plain Bearings

.001"	.100"	.500"	0-50-0	25-341/5P	53286
			0-100	25-441/5P	53294
.001"	.100"	1.000"	0-50-0	25-341P	53288
			0-100	25-441P	53296

\* Includes redemption card for Standard Letter of Certification.

## 253 DIAL INDICATOR SETS



### INCH AND MILLIMETER READING

These sets provide in one handy, compact kit three 25 Dial Indicators to handle most gaging jobs at a minimum cost. Sets are ideal for tool and die shops, machine shops and toolrooms having occasional work where a heavy investment in dial indicators would not be practical. The indicators are furnished with jewel bearings.

#### 253 Dial Indicator Sets

Description	Cat. No.	EDP
Set of 3 Inch Reading Dial Indicators: 25-111J, 25-131J and 25-441J	S253Z	51218
Set of 3 Millimeter Reading Dial Indicators: 25-161J, 25-181J and 25-881J	S253MZ	56283

Sets furnished in attractive, protective case.

