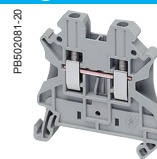


### Screw terminal blocks - Passthrough



		<b>NSYTRV22</b>			
Nominal c.s.a.	Type of block	Passthrough			
	Type of connection	1 pole - 1 x 1			
	Color	Grey			
	Max. electric values (U <sub>max</sub> , I <sub>max</sub> )	1000 V, 32 A			
<b>Dimensions (mm)</b>					
	Length	47.7			
	Height	47.5			
	Width	5.2			
Cabling c.s.a. (mm <sup>2</sup> )		2.5			
	Flexible cable	0.14 - 4			
	Solid cable	0.14 - 4			
<b>Nominal electric values</b>					
	IEC/EN 60947-7-1	1000 V, 24 A			
	UL	600 V, 20 A, 26 - 12 AWG			
	CSA	600 V, 20 A, 26 - 12 AWG			
	ATEX	690 V, 22 A			
Certifications		UL, CSA, VDE, ATEX, IECEx, GL, LR, DNV, EAC			
<b>Terminal blocks</b>					
	Grey	Sold in lots of	Unit reference		
	Blue	50	NSYTRV22		
	Orange	50	NSYTRV22BL		
	Red	50	NSYTRV22AR		
	Green	50	NSYTRV22RD		
	White	-	-		
	Black	50	NSYTRV22WH		
	Brown	-	-		
	Yellow	-	-		
<b>Accessories</b>					
1	End stop	Clip-on, 5.2 mm	50	NSYTRAAB35	
2	for 35 mm DIN rail	With screw, 9.5 mm	50	NSYTRAABV35	
3	End plate	Grey	50	NSYTRAC22	
		width 2.2 mm	Blue	50	NSYTRAC22BL
4	Partition plate, width 2 mm	Grey	50	NSYTRAP22	
		Blue	50	NSYTRAP22BL	
5	Plug-in bridge	Red	2-pole	50	NSYTRAL22
			3-pole	50	NSYTRAL23
			4-pole	50	NSYTRAL24
			5-pole	50	NSYTRAL25
			10-pole	10	NSYTRAL210
			20-pole	10	NSYTRAL220
	Blue	10-pole	10	NSYTRAL210BL	
	Grey	10-pole	10	NSYTRAL210GR	
6	Step-down bridge, down to 2.5/4 mm <sup>2</sup>	Screw to screw terminal	-	-	
		Screw to spring terminal	-	-	
	Vertical bridge	1-pole	-	-	
7	Pick-off terminal	Grey	-	-	
8	Test plug	Metallic part, Ø 2.3 mm	10	NSYTRAATM1	
		Insulating sleeve, red	10	NSYTRAATP1	
9	Test adaptor	For plug-in bridge shaft	10	NSYTRAFT	
10	Warning label	Yellow	10	NSYTRACS2	
11	Marker tag holder	For ●AB35 end stop	100	NSYTRASB4	
12	DIN rail 35 x 7.2 mm	Perforated, 2 m long	20	NSYSDR200BD	
13	Marking accessories		See page 90		
<b>General data</b>					
	Strip length (mm)	9			
	Screw thread	M3			
	Torque (Nm)	0.5 - 0.6			

