

# Product data sheet

Specifications

SQUARE D



Safety switch, general duty, fusible, 2 pole, 3 wire, 240VAC, 200A, Type 1, with neutral

D224N

Product availability: Stock - Normally stocked in distribution facility

## Main

Product	Single Throw Safety Switch
Duty Rating	General duty
Device Application	Residential
Disconnect Type	Fusible disconnect switch
Factory Installed Neutral	Neutral (factory installed)
Number of Poles	2
Current Rating	200 A
Voltage Rating	240 V AC
Enclosure Rating NEMA	NEMA 1
Motor power hp	15 hp at 240 V AC 60 Hz for 1 phase motors 25 hp at 240 V AC 60 Hz for 3 phase motors 60 hp at 240 V AC 60 Hz for 3 phase motors

## Complementary

Short Circuit Current Rating	100 kA maximum depending on fuse H, K or R
Fuse type	H, K or R
Mounting Type	Surface
Electrical Connection	Lugs
Wiring configuration	3-wire
Wire Size	AWG 6...250 kcmil aluminium/copper
Tightening torque	275 lbf.in (31.07 N.m) (AWG 6...250 kcmil)
Depth	8.25 in (209.55 mm)
Width	19 in (482.6 mm)
Height	29 in (736.6 mm)
Net Weight	53.51 lb(US) (24.27 kg)

## Environment

Certifications	UL listed file E2875
----------------	----------------------

## Ordering and shipping details

Category	US1DE1A00006
Discount Schedule	DE1A
GTIN	785901460749

Price is "List Price" and may be subject to a trade discount – check with your local distributor or retailer for actual price.

---

<b>Returnability</b>	Yes
----------------------	-----

---

<b>Country of origin</b>	US
--------------------------	----

## Packing Units

---

<b>Unit Type of Package 1</b>	PCE
-------------------------------	-----

---

<b>Number of Units in Package 1</b>	1
-------------------------------------	---

---

<b>Package 1 Height</b>	8.10 in (20.574 cm)
-------------------------	---------------------

---

<b>Package 1 Width</b>	30.50 in (77.47 cm)
------------------------	---------------------

---

<b>Package 1 Length</b>	19.30 in (49.022 cm)
-------------------------	----------------------

---

<b>Package 1 Weight</b>	41.80 lb(US) (18.96 kg)
-------------------------	-------------------------

## Contractual warranty

---

<b>Warranty</b>	18 months
-----------------	-----------



## Environmental Data

Schneider Electric aims to achieve Net Zero status by 2050 through supply chain partnerships, lower impact materials, and circularity via our ongoing “Use Better, Use Longer, Use Again” campaign to extend product lifetimes and recyclability.

[Environmental Data explained >](#)

[How we assess product sustainability >](#)

Environmental footprint	
Carbon footprint (kg CO2 eq, Total Life cycle)	177
Environmental Disclosure	<a href="#">Product Environmental Profile</a>

### Use Better

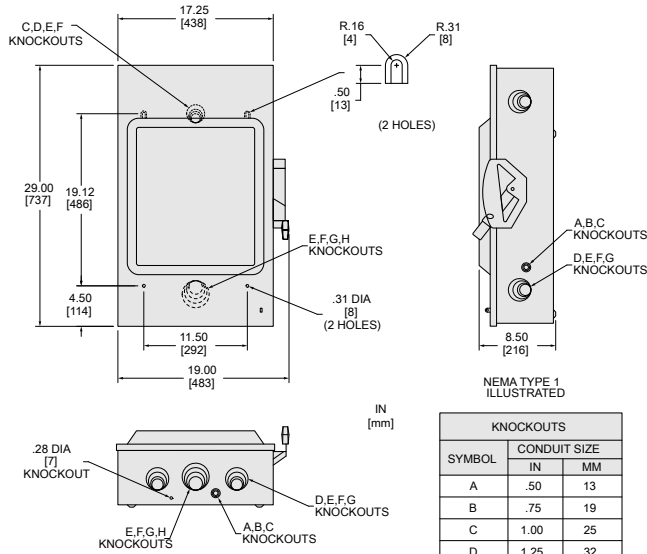
Materials and Substances	
Packaging made with recycled cardboard	Yes
Packaging without single use plastic	Yes
<a href="#">EU RoHS Directive</a>	Compliant
California proposition 65	<b>WARNING: This product can expose you to chemicals including: Lead and lead compounds, which is known to the State of California to cause cancer and birth defects or other reproductive harm. For more information go to <a href="http://www.P65Warnings.ca.gov">www.P65Warnings.ca.gov</a></b>
PVC free	Yes

### Use Again

Repack and remanufacture	
Circularity Profile	No need of specific recycling operations
Take-back	No

Technical Illustration

Dimensions



NEMA TYPE 1 ILLUSTRATED

SYMBOL	CONDUIT SIZE	
	IN	MM
A	.50	13
B	.75	19
C	1.00	25
D	1.25	32
E	1.50	38
F	2.00	51
G	2.50	64
H	3.00	76

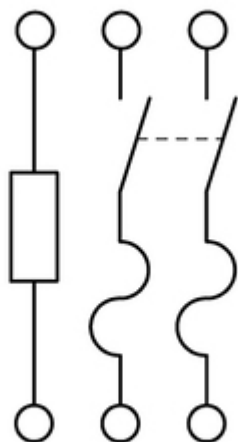
ALL DIMENSIONS ARE APPROXIMATE  
REFER TO TECHNICAL DRAWINGS AND DOCUMENTATION

Technical Illustration

Wiring diagram

---

### FUSIBLE



### D224N