



### Main

|                           |   |
|---------------------------|---|
| Range of product          | Modicon Momentum automation platform          |
| Product or component type | Discrete solid state I/O base DC              |
| Group of channels         | 2 groups of 8 outputs<br>1 group of 16 inputs |
| Discrete input number     | 16 IEC 1131-2 Type 1                          |
| Discrete input logic      | Positive                                      |
| Discrete input voltage    | 24 V DC                                       |
| Discrete output number    | 16  |
| Discrete output type      | Solid state switch                            |
| Discrete output voltage   | $\leq 30$ V DC<br>24 V DC                     |
| Discrete output logic     | Positive                                      |
| Protective treatment      | TC  |

### Complementary

|                            |  |
|----------------------------|--|
| [Us] rated supply voltage  | 24 V DC  |
| Input voltage limits       | - 3...30 V   |
| Voltage state 0 guaranteed | -3...5 V   |
| Voltage state 1 guaranteed | 11...30 V  |
| Current state 0 guaranteed | $\leq 1.2$ mA                                      |
| Current state 1 guaranteed | $\geq 2.5$ mA                                      |
| Input resistance           | 4 kOhm   |
| Discrete output current    | 4 A per group<br>8 A per module<br>0.5 A per point |
| Leakage current            | $< 1$ mA 24 V output circuit                       |
| Peak output current        | 5 A  |
| Voltage drop               | $< 0.5$ V 0.5 A at state 1 output circuit          |

Disclaimer: This documentation is not intended as a substitute for and is not to be used for determining suitability or reliability of these products for specific user applications

|                                    |  |
|------------------------------------|--|
| Fault type                         | Overload on output   |
| Response time                      | < 0.1 ms from state 0 to state 1 on output<br>< 0.1 ms from state 1 to state 0 on output<br>0.06 ms from state 0 to state 1 on input<br>0.08 ms from state 1 to state 0 on input   |
| Isolation between channels and bus | 500 V AC   |
| Power dissipation                  | 6 W<br><= 8 W  |
| Marking                            | CE   |
| Terminals description PLC n°1      | (14)IN_DIS#14<br>(10)IN_DIS#10<br>(9)IN_DIS#9<br>(12)IN_DIS#12<br>(11)IN_DIS#11<br>TB<br>(4)IN_DIS#4<br>(M-)PW_NEG<br>(2)IN_DIS#2<br>(5)IN_DIS#5<br>(15)IN_DIS#15<br>(1)IN_DIS#1<br>(8)IN_DIS#8<br>(L+)PW_POS<br>(3)IN_DIS#3<br>(6)IN_DIS#6<br>(7)IN_DIS#7<br>(16)IN_DIS#16<br>(13)IN_DIS#13                     |
| Terminals description PLC n°2      | (11)OUT_DIS#11<br>TB_1<br>(16)OUT_DIS#16<br>(1)OUT_DIS#1<br>(2L+)PW_POS<br>(15)OUT_DIS#15<br>(1L+)PW_POS<br>(6)OUT_DIS#6<br>(12)OUT_DIS#12<br>(13)OUT_DIS#13<br>(2)OUT_DIS#2<br>(4)OUT_DIS#4<br>(5)OUT_DIS#5<br>(10)OUT_DIS#10<br>(3)OUT_DIS#3<br>(14)OUT_DIS#14<br>(7)OUT_DIS#7<br>(8)OUT_DIS#8<br>(9)OUT_DIS#9 |
| Current consumption                | 250 mA 24 V DC   |
| Depth                              | 47.5 mm  |
| Height                             | 141.5 mm   |
| Width                              | 125 mm   |
| Product weight                     | 0.2 kg   |

## Environment

|                                       |   |
|---------------------------------------|---|
| Product certifications                | UL<br>CSA                                       |
| Resistance to electrostatic discharge | 4 kV contact IEC 801-2<br>8 kV on air IEC 801-2 |
| Resistance to electromagnetic fields  | 10 V/m 80...1000 MHz IEC 801-3                  |
| Ambient air temperature for operation | 0...60 °C                                       |
| Ambient air temperature for storage   | -40...85 °C                                     |
| Relative humidity                     | 95 % without condensation                       |
| Operating altitude                    | <= 5000 m                                       |

## Offer Sustainability

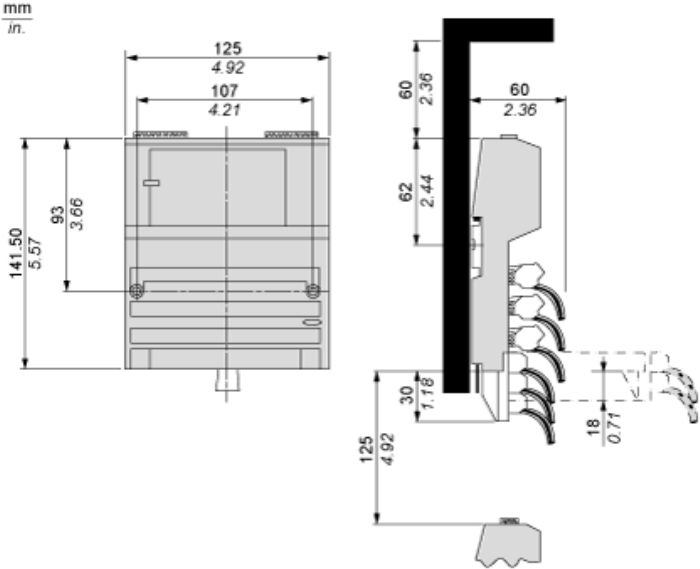
|                                  |   |
|----------------------------------|---|
| Sustainable offer status         | Green Premium product   |
| RoHS (date code: YYWW)           | Compliant - since 1350 - Schneider Electric declaration of conformity<br><a href="#">Schneider Electric declaration of conformity</a> |
| REACH                            | Reference not containing SVHC above the threshold<br><a href="#">Reference not containing SVHC above the threshold</a>                |
| Product environmental profile    | Available<br><a href="#">Product Environmental Profile</a>  |
| Product end of life instructions | Available<br><a href="#">End of Life Information</a>  |

## Contractual warranty

|                 |           |
|-----------------|-----------|
| Warranty period | 18 months |
|-----------------|-----------|

Standard Adapter on a Typical Base

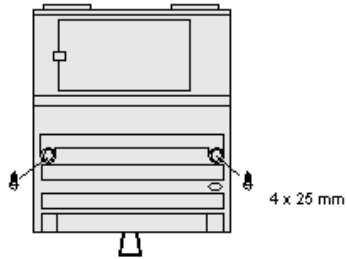
Dimensions



---

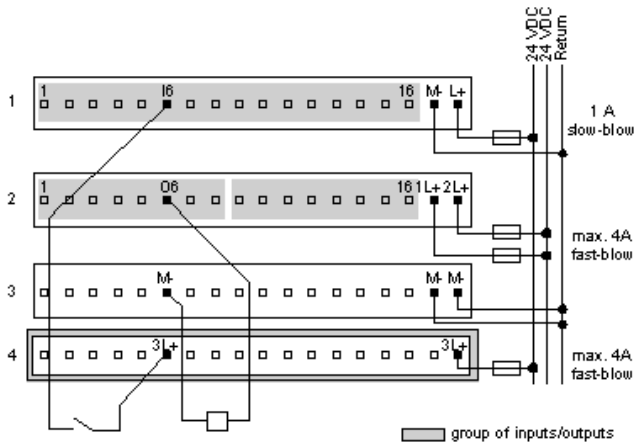
Mounting on a Wall

---

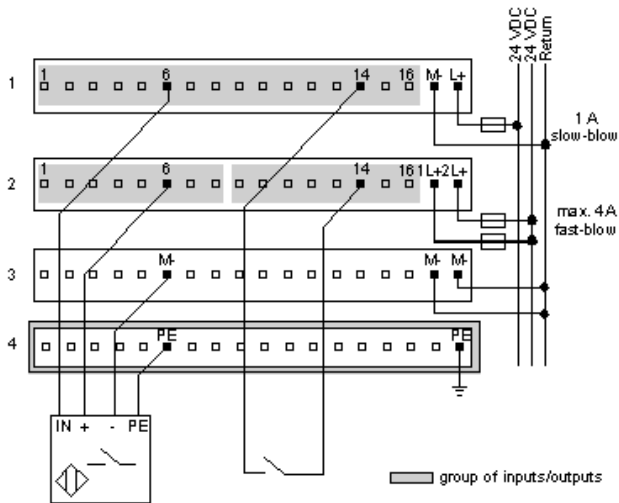


External Wiring Diagrams

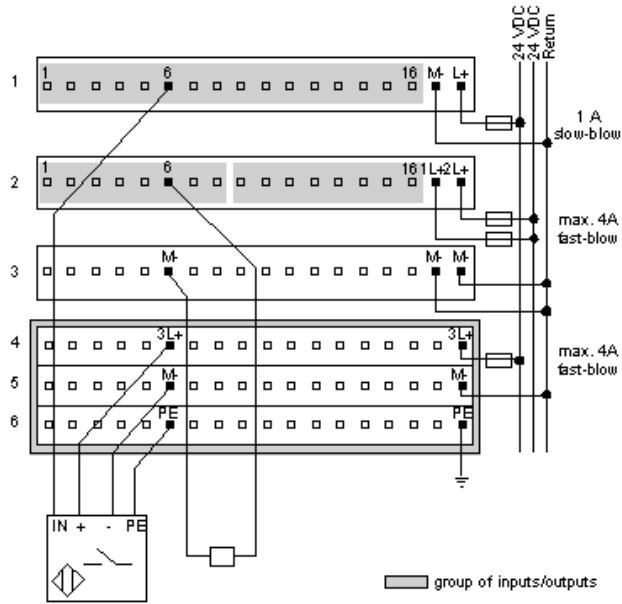
2-Wire Devices



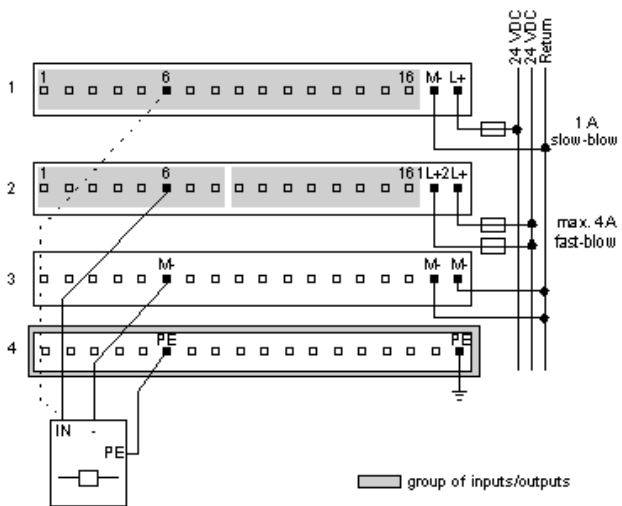
Sensor Activated by Output



## Four-Wire Sensor with a Two-Wire Actuator



## Broken Wire Detection



Internal Pin Connections

Rows 1 through 3 show the internal connections between terminals on the I/O base. Rows 4 through 6 show the internal connections on the optional busbar.

