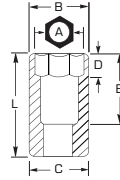


## 1/4" DRIVE SOCKETS - 8 POINT

▶ Proto® 8 Point Sockets are ideal for use on stubborn or damaged fasteners, and also on fasteners made from soft materials.

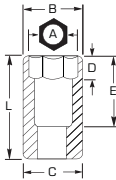


- ▶ Radius-corner socket design
- ▶ Engages flats for better grip
- ▶ Improves the ability to turn worn or rounded fasteners

INCH	8	Nut End Outside Diameter (in) (B)	Drive End Outside Diameter (in) (C)	Nut Depth (in) (D)	Bolt Clearance Depth (in) (E)	Overall Length (in) (L)	Weight (lbs)
1/4	<b>J4708S</b>	31/64	31/64	1/4	17/32	7/8	0.03
5/16	<b>J4710S</b>	9/16	9/16	1/4	17/32	7/8	0.05
3/8	<b>J4712S</b>	11/16	11/16	1/4	17/32	7/8	0.06

## 1/4" DRIVE DEEP SOCKETS

▶ Proto® 6 Point Sockets are ideal for use on stubborn or damaged fasteners, and also on fasteners made from soft materials.



- ▶ Radius-corner socket design
- ▶ Engages flats for better grip
- ▶ Improves the ability to turn worn or rounded fasteners

INCH	6	6	12	Nut End Outside Diameter (in) (B)	Drive End Outside Diameter (in) (C)	Nut Depth (in) (D)	Bolt Clearance Depth (in) (E)	Overall Length (in) (L)	Weight (lbs)
3/16	<b>J4706L</b>	<b>J4706LB</b>	<b>J4706LT</b>	5/16	29/64	9/32	1-21/32	2	0.05
7/32	<b>J4707L</b>	<b>J4707LB</b>	<b>J4707LT</b>	11/32	15/32	3/8	1-21/32	2	0.05
1/4	<b>J4708L</b>	<b>J4708LB</b>	<b>J4708LT</b>	25/64	15/32	3/8	1-1/2	2	0.05
9/32	<b>J4709L</b>	<b>J4709LB</b>	<b>J4709LT</b>	7/16	15/32	3/8	1-1/2	2	0.05
5/16	<b>J4710L</b>	<b>J4710LB</b>	<b>J4710LT</b>	15/32	15/32	3/8	1-1/2	2	0.06
11/32	<b>J4711L</b>	<b>J4711LB</b>	<b>J4711LT</b>	1/2	1/2	5/8	1-1/2	2	0.06
3/8	<b>J4712L</b>	<b>J4712LB</b>	<b>J4712LT</b>	9/16	9/16	5/8	1-27/64	2	0.08
7/16	<b>J4714L</b>	<b>J4714LB</b>	<b>J4714LT</b>	37/64	39/64	5/8	1-27/64	2	0.09
1/2	<b>J4716L</b>	<b>J4716LB</b>	<b>J4716LT</b>	11/16	11/16	5/8	1-27/64	2	0.13
9/16	<b>J4718L</b>	<b>J4718LB</b>	<b>J4718LT</b>	3/4	3/4	5/8	1-27/64	2	0.14

MM	6	12	Nut End Outside Diameter (in) (B)	Drive End Outside Diameter (in) (C)	Nut Depth (in) (D)	Bolt Clearance Depth (in) (E)	Overall Length (in) (L)	Weight (lbs)
4	<b>J4704LM</b>	-	9/32	29/64	13/64	55/64	1-63/64	0.04
5	<b>J4705LM</b>	<b>J4705LTM</b>	5/16	29/64	9/32	55/64	1-63/64	0.04
5.5	<b>J47055LM</b>	<b>J47055LTM</b>	11/32	29/64	9/32	55/64	1-63/64	0.04
6	<b>J4706LM</b>	<b>J4706LTM</b>	3/8	29/64	3/8	55/64	1-63/64	0.04
7	<b>J4707LM</b>	<b>J4707LTM</b>	27/64	29/64	3/8	55/64	1-63/64	0.04
8	<b>J4708LM</b>	<b>J4708LTM</b>	29/64	29/64	13/32	1-5/32	1-63/64	0.06
9	<b>J4709LM</b>	<b>J4709LTM</b>	1/2	1/2	39/64	1-5/32	1-63/64	0.06
10	<b>J4710LM</b>	<b>J4710LTM</b>	9/16	9/16	5/8	1-27/64	1-63/64	0.07
11	<b>J4711LM</b>	<b>J4711LTM</b>	39/64	39/64	5/8	1-27/64	1-63/64	0.09
12	<b>J4712LM</b>	<b>J4712LTM</b>	21/32	21/32	5/8	1-27/64	1-63/64	0.11
13	<b>J4713LM</b>	<b>J4713LTM</b>	11/16	11/16	5/8	1-27/64	1-63/64	0.15
14	<b>J4714LM</b>	<b>J4714LTM</b>	49/64	49/64	5/8	1-27/64	1-63/64	0.15
15	<b>J4715LM</b>	<b>J4715LTM</b>	53/64	53/64	5/8	1-27/64	2	0.20

6 6 POINT  
 8 8 POINT  
 12 12 POINT  
 SPL SPLINE  
 HEX HEX  
 ○ FULL POLISH  
 ◐ SATIN  
 ● BLACK OXIDE  
 ◑ INSULATED