

## FILTERFANS®

### PF 11000

- Airflow rate up to 17 CFM
- System of protection IP 54, NEMA type 12
- Cut-out dimensions: 92 x 92 mm

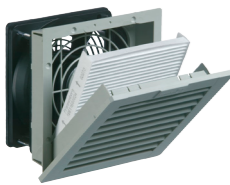


Available voltage ± 10%	115 V, 230 V, 24 VDC
Design (housing and protection against accidental contact)	made of injection-moulded thermo-plastic, self-extinguishing, UL 94 VO
Service life L <sub>10</sub> (+ 40 °C)	52,500 h
Weight	1.2 lb
Color	RAL 7035 (Lt. Gray) RAL 9011 (Blk)
Noise level (EN ISO 3741)	33 dB (A)
Type of connection	cable, 2-core, length 310 mm
Bearing type	sleeve bearing
Approvals	UL, cUL, CE, (on request: GOST)
Power consumption	11 W
Width x height x depth	4.29 x 4.29 x 2.44 in

System of protection (EN 60529)	IP 54
System of protection (UL 50)	NEMA Type 12 - standard filter
Filter mat quality class	G 3
Unimpeded airflow	17 CFM
Airflow rate in combination (PF + PFA 10.000)	11 CFM
Filtration efficiency	88%
<b>Part no. *</b>	11611151055 (115 V, Lt. Gray)
<b>Part no. *</b>	11611151050 (115 V, Black)
<b>Part no. Spare part filter mats (5 pieces)</b>	18611600029
<b>Part no. NEMA Type 3R Rainhood *</b>	18102000013 (Lt. Gray)

### PF 22000

- Airflow rate up to 38 CFM
- System of protection IP 55, NEMA type 12
- Cut-out dimensions: 125 x 125 mm



Available voltage ± 10%	115 V, 230 V, 24 VDC
Design (housing and protection against accidental contact)	made of injection-moulded thermo-plastic, self-extinguishing, UL 94 VO
Service life L <sub>10</sub> (+ 40 °C)	40,000 h
Weight	1.5 lb
Color	RAL 7035 (Lt. Gray) RAL 9011 (Blk)
Noise level (EN ISO 3741)	44 dB (A)
Type of connection	terminal strip
Bearing type	sleeve bearing
Approvals	UL, cUL, CE, (on request: GOST)
Power consumption	20 W
Width x height x depth	5.71 x 5.71 x 2.76 in

System of protection (EN 60529)	IP 55
System of protection (UL 50)	NEMA Type 12 - fluted filter
Filter mat quality class	G 4
Unimpeded airflow	38 CFM
Airflow rate in combination (PF + PFA 20.000)	28 CFM
Filtration efficiency	91%
<b>Part no. *</b>	11622154055 (115 V, Lt. Gray)
<b>Part no. *</b>	11622154050 (115 V, Black)
<b>Part no. Spare part filter mats (5 pieces)</b>	18611600034
<b>Part no. NEMA Type 3R Rainhood *</b>	18102000013 (Lt. Gray)

### PF 32000

- Airflow rate up to 65 CFM
- System of protection IP 55, NEMA type 12
- Cut-out dimensions: 177 x 177 mm



Available voltage ± 10%	115 V, 230 V, 24 VDC
Design (housing and protection against accidental contact)	made of injection-moulded thermo-plastic, self-extinguishing, UL 94 VO
Service life L <sub>10</sub> (+ 40 °C)	40,000 h
Weight	1.9 lb
Color	RAL 7035 (Lt. Gray) RAL 9011 (Blk)
Noise level (EN ISO 3741)	40 dB (A)
Type of connection	terminal strip
Bearing type	sleeve bearing
Approvals	UL, cUL, CE, (on request: GOST)
Power consumption	20 W
Width x height x depth	7.95 x 7.95 x 3.66 in

System of protection (EN 60529)	IP 55
System of protection (UL 50)	NEMA Type 12 - fluted filter
Filter mat quality class	G 4
Unimpeded airflow	65 CFM
Airflow rate in combination (PF + PFA 30.000)	38 CFM
Filtration efficiency	91%
<b>Part no. *</b>	11632154055 (115 V, Lt. Gray)
<b>Part no. *</b>	11632154050 (115 V, Black)
<b>Part no. Spare part filter mats (5 pieces)</b>	18611600035
<b>Part no. NEMA Type 3R Rainhood *</b>	18102000016 (Lt. Gray)

\*Consult factory for additional options

## FILTERFANS®

### PF 42500

- Airflow rate up to 94 CFM
- System of protection IP 55, NEMA type 12
- Cut-out dimensions: 223 x 223 mm



Available voltage ± 10%	115 V, 230 V, 24 VDC
Design (housing and protection against accidental contact)	made of injection-moulded thermo-plastic, self-extinguishing, UL 94 VO
Service life L <sub>10</sub> (+ 40 °C)	42,500 h
Weight	2.6 lb
Color	RAL 7035 (Lt. Gray) RAL 9011 (Blk)
Noise level (EN ISO 3741)	43 dB (A)
Type of connection	spring-type terminal
Bearing type	ball bearing
Approvals	UL, cUL, CE, (on request: GOST)
Power consumption	17 W
Width x height x depth	9.92 x 9.92 x 4.05 in

System of protection (EN 60529)	IP 55
System of protection (UL 50)	NEMA Type 12 - fluted filter
Filter mat quality class	G 4
Unimpeded airflow	94 CFM
Airflow rate in combination (PF + PFA 40.000)	67 CFM
Filtration efficiency	91%
<b>Part no. *</b>	11642154055 (115 V, Lt. Gray)
<b>Part no. *</b>	11642154050 (115 V, Black)
<b>Part no. Spare part filter mats (5 pieces)</b>	18611600036
<b>Part no. NEMA Type 3R Rainhood *</b>	18102000016 (Lt. Gray)

### PF 43000

- Airflow rate up to 155 CFM
- System of protection IP 55, NEMA type 12
- Cut-out dimensions: 223 x 223 mm



Available voltage ± 10%	115 V, 230 V, 24 VDC
Design (housing and protection against accidental contact)	made of injection-moulded thermo-plastic, self-extinguishing, UL 94 VO
Service life L <sub>10</sub> (+ 40 °C)	40,000 h
Weight	3.68 lb
Color	RAL 7035 (Lt. Gray) RAL 9011 (Blk)
Noise level (EN ISO 3741)	46 dB (A)
Type of connection	spring-type terminal
Bearing type	ball bearing
Approvals	UL, cUL, CE, (on request: GOST)
Power consumption	40 W
Width x height x depth	9.92 x 9.92 x 4.69 in

System of protection (EN 60529)	IP 55
System of protection (UL 50)	NEMA Type 12 - fluted filter
Filter mat quality class	G 4
Unimpeded airflow	155 CFM
Airflow rate in combination (PF + PFA 40.000)	122 CFM
Filtration efficiency	91%
<b>Part no. *</b>	11643154055 (115 V, Lt. Gray)
<b>Part no. *</b>	11643154050 (115 V, Black)
<b>Part no. Spare part filter mats (5 pieces)</b>	18611600036
<b>Part no. NEMA Type 3R Rainhood *</b>	18102000016 (Lt. Gray)

### PF 65000

- Airflow rate up to 297 CFM
- System of protection IP 55, NEMA type 12
- Cut-out dimensions: 291 x 291 mm



Available voltage ± 10%	115 V, 230 V
Design (housing and protection against accidental contact)	made of injection-moulded thermo-plastic, self-extinguishing, UL 94 VO
Service life L <sub>10</sub> (+ 40 °C)	40,000 h
Weight	7 lb
Color	RAL 7035 (Lt. Gray) RAL 9011 (Blk)
Noise level (EN ISO 3741)	52 dB (A)
Type of connection	spring-type terminal
Bearing type	ball bearing
Approvals	UL, cUL, CE, (on request: GOST)
Power consumption	90 W
Width x height x depth	12.6 x 12.6 x 6.18 in

System of protection (EN 60529)	IP 55
System of protection (UL 50)	NEMA Type 12 - fluted filter
Filter mat quality class	G 4
Unimpeded airflow	297 CFM
Airflow rate in combination (PF + PFA 60.000)	224 CFM
Filtration efficiency	91%
<b>Part no. *</b>	11665154055 (115 V, Lt. Gray)
<b>Part no. *</b>	11665154050 (115 V, Black)
<b>Part no. Spare part filter mats (5 pieces)</b>	18611600037
<b>Part no. NEMA Type 3R Rainhood *</b>	18102000019 (Lt. Gray)

\*Consult factory for additional options