

Brass Ball Valves Series 500

Advantages

Parker's forged body ball valve provides extended service life and resists failure caused by severe temperature applications. Optimum flow design assures maximum system efficiency. Highly inert PTFE seats and seals provide resistance to chemical corrosion. Parker also provides a blow-out proof stem, chrome plated brass ball and a specially designed handle enabling increased turning leverage for ease of opening and closing. Parker's ball valve can be readily identified assuring high quality engineering and reliability. This economical ball valve is available in female pipe sizes. Parker's ball valve bodies are machined from high quality CA 377 forgings.

Applications

Parker's industrial ball valve product line is intended for general purpose use. Please be aware that ball valves are intended for use in the fully open or closed positions. Depending on application conditions, throttling of the valve may result in premature seal failure and/or inability to turn the valve handle.

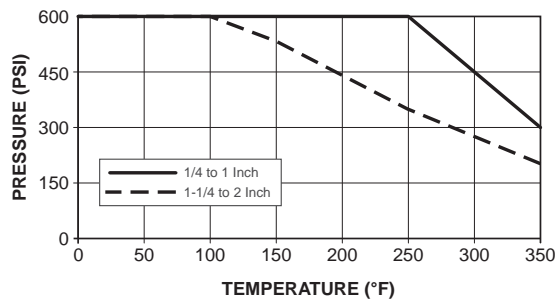
For use as fuel line shutoffs for gasoline and diesel powered over the highway, off highway, and construction equipment vehicles. Water and air service lines on capital equipment and plant design plumbing that require total shutoff capability.

Working Pressure and Temperature

Saturated steam service up to 150 PSI and 400°F

Vacuum, 29 Inches of Mercury

Vented up to 250 PSI



Operating Instructions

Quarter turn is "ON" or "OFF".

(Provides positive stop action for full shutoff.)

NOTE: PERIODICALLY CHECK THE ADJUSTABLE PACKING NUT AND TIGHTEN AS REQUIRED.

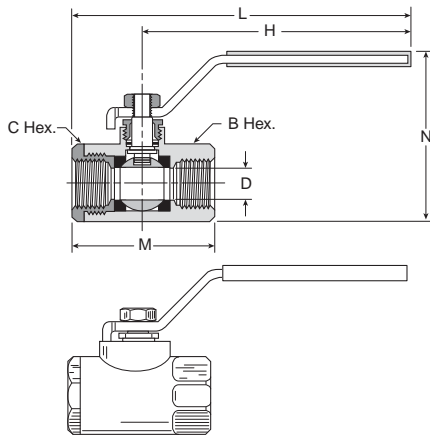
Style	Type	Material	Size	Options
V	500	P	4	00
Style	V – Valve			
	VP – Valve, Padlocking Handle			
	VV – Valve, Vented			
	VVP – Valve, Vented, Padlocking Handle			
Type	500 – Female / Female PTF Ports			
Material	P – Brass			
	PN – Nickel Plated			
Size	4 - 1/4"			
	6 - 3/8"			
	8 - 1/2"			
	12 - 3/4"			
	16 - 1"			
Options	04 - Tee handle			

Style	Type	Material	Size
V	500	P	20
Style	V – Valve		
	VP – Valve, Padlocking Handle		
Type	500 – Female / Female PTF Ports		
Material	P – Brass		
Size	20 – 1-1/4"		
	24 – 1-1/2"		
	32 – 2"		

Flow Data

Valve Size	Cv
1/4	4.0
3/8	5.8
1/2	12.0
3/4	35.0
1	54.0
1-1/4	57.0
1-1/2	92.0
2	224.0

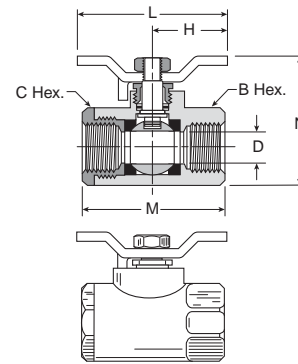
V500P Female-Female Pipe Ends



Part No.	Pipe Thread [PTF]	B Hex.	C Hex.	H	L	M	N	Flow Dia. D
V500P-4	1/4	15/16	15/16	3.96	4.90	2.03	2.47	0.375
V500P-6	3/8	15/16	15/16	3.96	4.90	2.03	2.47	0.375
V500P-8	1/2*	1-1/16	1-1/16	3.96	5.00	2.20	2.58	0.500
V500P-12†	3/4**	1-1/4	1-5/16	3.96	5.25	2.42	2.81	0.685
V500P-16†	1**	1-1/2	1-9/16	3.96	5.34	2.75	3.08	0.875

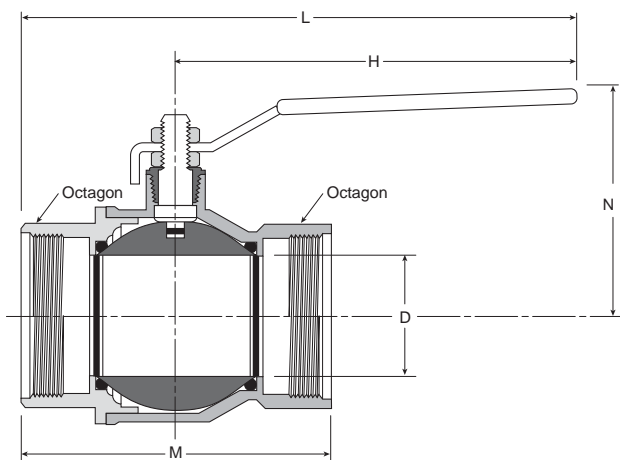
*PTF special short
**PTF special extra short
† Available in Full Flow Panel Mount, see XV508P Series

V500P-X-04 Tee Handle, Female Pipe Ends



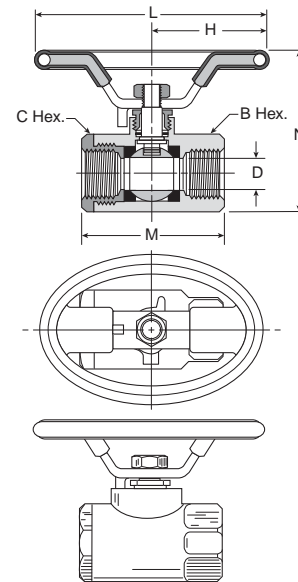
Part No.	Pipe Thread	B Hex.	C Hex.	H	L	M	N	Flow Dia. D
V500P-4-04	1/4	15/16	15/16	1.25	2.50	2.03	1.87	.375
V500P-6-04	3/8	15/16	15/16	1.25	2.50	2.03	1.87	.375
V500P-8-04	1/2*	1-1/16	1-1/16	1.25	2.50	2.20	1.98	.500
V500P-12-04	3/4**	1-1/4	1-5/16	1.25	2.50	2.42	2.20	.685
V500P-16-04	1**	1-1/2	1-9/16	1.25	2.50	2.75	2.48	.875

V500P-20, V500P-24, V500P-32
Female - Female Pipe Ends



Part No.	Pipe Thread [PTF]	Octagon	H	L	M	N	Dia. D
V500P-20	1-1/4	1.93	6.22	8.05	3.66	3.01	1.18
V500P-24	1-1/2	2.13	6.22	8.23	4.02	3.25	1.50
V500P-32	2	2.69	6.22	8.58	4.76	3.52	1.89

V500P-X-21 Oval Handle, Female Pipe Ends



Part No.	Pipe Thread	B Hex.	C Hex.	H	L	M	N	Flow Dia. D
V500P-4-21	1/4	15/16	15/16	1.74	3.49	2.03	2.38	.375
V500P-6-21	3/8	15/16	15/16	1.74	3.49	2.03	2.38	.375
V500P-8-21	1/2*	1-1/16	1-1/16	1.74	3.49	2.20	2.49	.500
V500P-12-21	3/4**	1-1/4	1-5/16	1.74	3.48	2.42	2.71	.685
V500P-16-21	1**	1-1/2	1-9/16	1.74	3.48	2.75	2.99	.875

