

THIS COPY IS PROVIDED ON A RESTRICTED BASIS AND IS NOT TO BE USED IN ANY WAY DETRIMENTAL TO THE INTERESTS OF PANDUIT CORP.

NOTES:

- UL LISTED AND CSA CERTIFIED FOR:
  - 600 V MAX. VOLTAGE RATING
  - TEMPERATURE RATING OF INSULATION: 150° (221° F)
  - SOLID OR STRANDED, COPPER WIRE
- MATERIAL:
  - STAMPING (22-18 & 16-14) - .03 [0.8] THK COPPER, TIN PLATED
  - STAMPING (12-10) - .04 [1.0] THK COPPER, TIN PLATED
  - BRAZED SEAM
  - HOUSING - NYLON
- ALL DIMENSIONS ARE IN INCHES EXCEPT DIMENSIONS IN BRACKETS WHICH ARE MILLIMETERS
- INSTALLATION TOOLS: CT-100, CT-1550, CT-1551
- \* 12-10 AWG STRANDED AND 12 AWG SOLID COPPER WIRE WITH CT-1550 & CT-1551 TOOLS
  - \*\* 18-14 AWG WIRE RANGE WITH CT-1550 AND CT-1551 TOOLS
  - \*\*\* 22-16 AWG WIRE RANGE WITH CT-1550 AND CT-1551 TOOLS
- WIRE STRIP LENGTH:
 

BSN18 & BSN14	-	9/32	+	1/32	[	7.1	+	0.8	]
				0				0	
BSN10	-	9/32	+	1/32	[	7.1	+	0.8	]
				0				0	
- SEE [www.PANDUIT.COM](http://www.PANDUIT.COM) FOR PACKAGE QUANTITIES INDICATED BY PART NUMBER SUFFIX

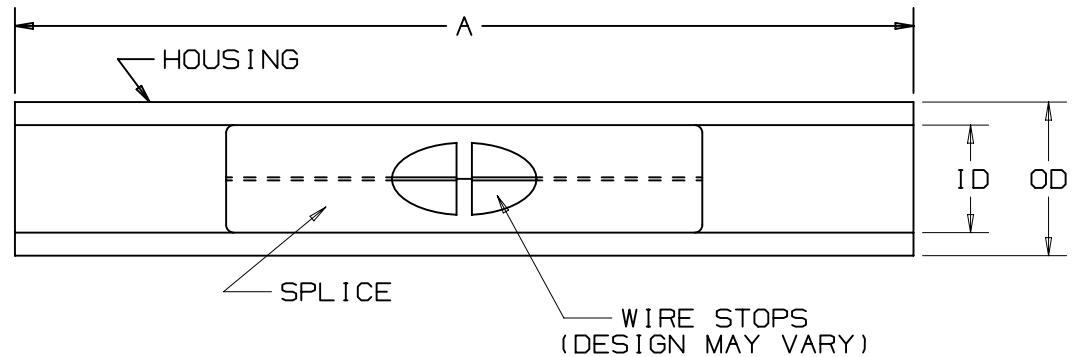
PANDUIT PART NUMBER	WIRE RANGE (AWG)	COLOR CODE	DIMENSIONS in.			
			MAX WIRE INSUL DIA	A $\pm .020$ (.51)	ID $\pm .020$ (.51)	OD $\pm .020$ (.51)
BSN18	***22-18	RED	.115 (2,92)	1.15 (29,2)	0.13 (3,3)	0.20 (5,1)
BSN14	**16-14	BLUE	.148 (3,76)	1.15 (29,2)	0.15 (3,9)	0.20 (5,1)
BSN10	*12-10	YELLOW	.210 (5,33)	1.14 (29,0)	0.21 (5,3)	0.27 (6,8)



LISTED  
587H  
E52164



CERTIFIED  
LR31212



					TITLE <b>NYLON INSULATED BUTT SPLICES</b>					
					CUSTOMER DRAWING					
					ITEM REVISION NAME N41182BA/13			<b>PANDUIT</b>		
					DATASET FILE NAME N41182BA/13					
					UNLESS OTHERWISE SPECIFIED, DIMENSIONAL TOLERANCES ARE: IN [ mm ]					
					.X ± .XX ±			.XXX ± ANGLES ±		
					THIRD ANGLE PROJECTION			DRAWING NUMBER: <b>A41182</b>		
13	2/15	TMR	TMR	RGB	ADDED NOTE ON BRAZED SEAM AND PACKAGING REVISED TITLE BLOCK			N41182BA-DC		
REV	DATE	BY	CHK	APR	DESCRIPTION			ECN	DRAWN BY: FES DATE: _____ CHK: RLS SCALE: N/A	SHT 1 OF 1 SIZE: A

D10100DA/16