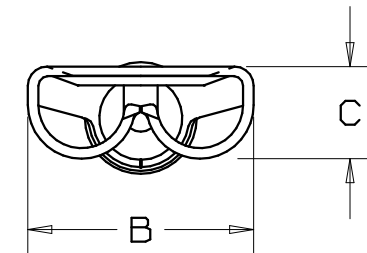


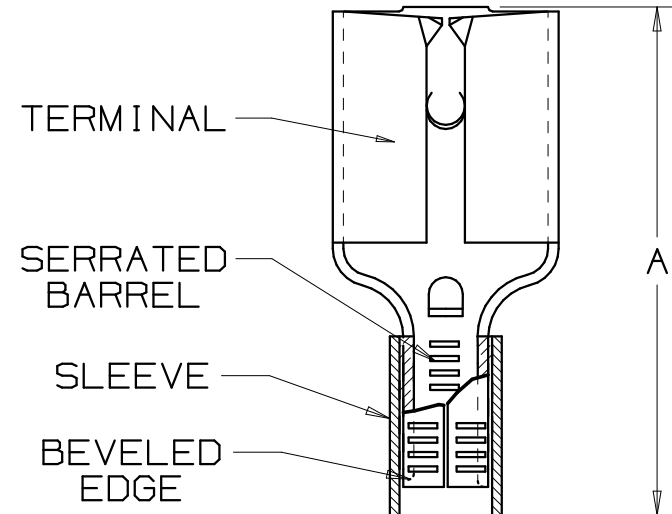
THIS COPY IS PROVIDED ON A RESTRICTED BASIS AND IS NOT TO BE USED IN ANY WAY DETRIMENTAL TO THE INTERESTS OF PANDUIT CORP.

PART NUMBER		TAB SIZE	WIRE RANGE AWG (mm ²)	DIMENSIONS in		
PREFIX	PKG			A ± 0.015 (0.4)	B ± 0.010 (0.3)	C ± 0.010 (0.3)
D18-188	-C -M	.187 x .020 (4.8 x 0.5)	22-18 (.5-1.0)	.58 (14.7)	.23 (5.8)	.10 (2.5)
* D14-188	-C -M	.187 x .020 (4.8 x 0.5)	16-14 (1.5-2.5)	.58 (14.7)	.23 (5.8)	.10 (2.5)
D18-187	-C -M	.187 x .032 (4.8 x 0.8)	22-18 (.5-1.0)	.58 (14.7)	.23 (5.8)	.10 (2.5)
* D14-187	-C -M	.187 x .032 (4.8 x 0.8)	16-14 (1.5-2.5)	.58 (14.7)	.23 (5.8)	.10 (2.5)



NOTES:

- UL LISTED, UL RECOGNIZED (D14-187 & D14-188 ONLY) AND CSA CERTIFIED FOR:
A. STRANDED COPPER WIRE ONLY
B. 302° F (150° C) MAX TEMP RATING
- PACKAGE QTY:
A. STD: -C=100
B. BULK: -M=1000
- MATERIAL:
A. STAMPING: .016 (0.41) THK BRASS, TIN PLATED
B. SLEEVE: BRASS, TIN PLATED
- WIRE STRIP LENGTH $9/32^{+1/32}$ (7.1 $^{+0.8}$), $^{-0}$
- FIRST INSERTION FORCE: 12 LB (53N) MAX
FIRST WITHDRAWAL FORCE: 12 LB (53N) MAX
6 LB (27N) MIN
- INSTALLATION TOOLS:
A. UL LISTED AND CSA CERTIFIED: CT-100, CT-200, CT-570, CT-1570, CT-2457CH
B. UL RECOGNIZED: CT-100, CT-200, CT-570, CT-1570, CT-2457CH
C. PANDUIT APPROVED: CT-160, CT-260
- DIMENSIONS IN BRACKETS ARE IN MILLIMETERS OR mm²



LISTED
20H3
E78522



CERTIFIED
LR31212



RECOGNIZED
E78522

A41305_08

PANDUIT

CORP.

TINLEY PARK, ILLINOIS

NON-INSULATED FEMALE DISCONNECT,
SLEEVED BARREL (.188 SERIES)

08	6/06	DAW	DAW	REMOVED MAX. AMPERAGE RATING	TRO0134				
07	7/03	KLFU	SKB	ADDED INTERNAL SERRATIONS WIRE RANGE 1,0 WAS 1,5	012453		SKB	TRO	
06	1/01	RM	SKB	FILESPEC WAS N41305AA_PCD_05	08933		JAC	CCH	
05	10/96	TM		ADD 187'S, UPDATED NOTES, FILESPEC WAS NPC_41305_04	05164				
04	3/95	MS	RS	UPDATED NOTES AND DIMENSIONS	03051		LA	KS	
REV	DATE	BY	CHK	DESCRIPTION	ECN #	QA	CUST	PM	APP

DRAWN BY

DAW

CHK'D

SCALE

NONE

DRAWING NO.

A41305