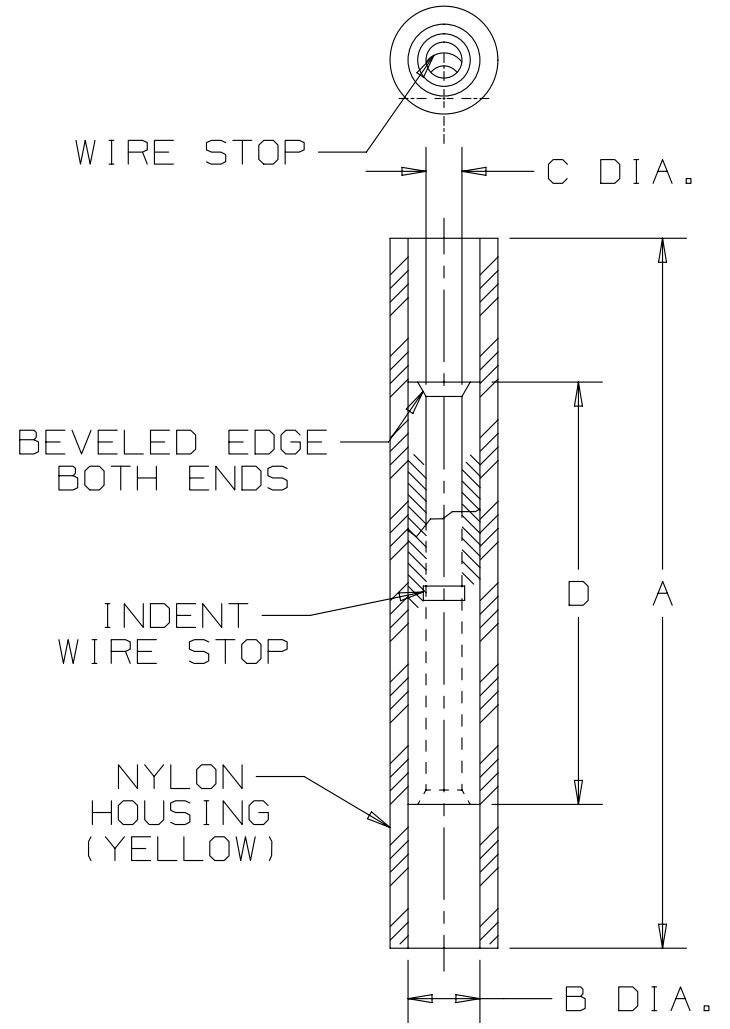


THIS COPY IS PROVIDED ON A RESTRICTED BASIS AND IS NOT TO BE USED IN ANY WAY DETRIMENTAL TO THE INTERESTS OF PANDUIT CORP.

PANDUIT PART NUMBER	WIRE SIZE	DIMENSIONS in.			
		$\pm .03$ A	$\pm .01$ B DIA.	$\pm .01$ C DIA.	$\pm .03$ D
BSN22	26-22	.79 (20.1)	.08 (2.0)	.04 (1.0)	.47 (1.2)



NOTES:

- USED FOR:
 - A. #26-22 AWG SOLID OR STRANDED COPPER WIRE
 - B. 221°F [105°C] MAX. TEMP. RATING
- INSTALLATION TOOLS: CT-520, CT-1525, CT-2500
- WIRE STRIP LENGTH: 1/4 $\pm \frac{1}{32}$ [6,4 $\pm \frac{1}{16}$]
- MATERIAL:
 - A. STAMPING: .02" [0,5] THK COPPER, TIN PLATED
 - B. HOUSING: NYLON, YELLOW
- SEE www.panduit.com FOR PACKAGE QUANTITIES INDICATED BY PART NUMBER SUFFIX
- DIMENSIONS IN BRACKETS ARE METRIC EQUIVALENT.

REV	DATE	BY	CHK	APR	DESCRIPTION	ECN
07	04-25-13	JBN	RTFI	RTFI	UPDATED DRAWING BORDER & TITLE BLOCK	A41337

TITLE BARREL NYLON INSULATED BUTT SPLICE #26-22			
CUSTOMER DRAWING			
ITEM REVISION NAME N41337BA/07		PANDUIT	
DATASET FILE NAME N41337BA_DC/07A			
UNLESS OTHERWISE SPECIFIED, DIMENSIONAL TOLERANCES ARE: IN [mm]		MATERIAL: SEE NOTES	
.x \pm .1 [2.54] .xxx \pm .005 [0.127]		DRAWING NUMBER: A41337	
.xx \pm .01 [0.25] ANGLES \pm 5°		THIRD ANGLE PROJECTION	
DRAWN BY DAW	DATE -	CHK -	SCALE NONE
SHT 1 OF 1			SIZE A

D101000DA/15