

Cast Device Boxes

For Rigid Conduit & IMC

Types

FS - Shallow

FD - Deep

Use:

Accommodates wiring devices and provides opening to splice, tap or pull conductors.

Features:

- Tapered threaded hubs (NPT) with integral bushings.
- Both FS and FD styles are deeper than similar boxes, providing greater internal volume.
- Internal grounding screw standard on all boxes.
- Mounting feet standard on FS, FD, FSC, FDC, FSA and FDA styles. FS/FD boxes without mounting lugs may be supported by the attached conduits per NEC Section 314-23(E).
- Available single gang, two gang and tandem styles.
- Suitable for use in wet locations when used with gasketed covers.
- Gray Iron is suitable for concrete use.
- For use with FS style covers on Pages AE3 and AE4 as well as standard device plates made of steel, brass, bakelite, etc.


Material/Finish:


Gray Iron/Zinc Electroplated/Aluminum Enamel.
Copper-free Aluminum/Aluminum Enamel.

Optional Finish:

For additional corrosion protection, specify Hot Dip Galvanized. Add suffix "G" to Gray Iron catalog number. Contact your local representative for pricing and availability.

Third Party Certification:

 UL Listed: E-18095
Raintight-Suitable for wet locations when used with gasketed covers.
See pages AE3 and AE4.

 CSA Certified: 009795
Raintight-Suitable for wet locations when used with gasketed covers.
See pages AE3 and AE4.

Dimensional Data:

See page AE6.

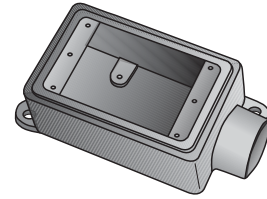
Applicable Third Party Standards:

| Trade Size (inches) | Catalog Number Gray Iron | Catalog Number Aluminum |
|---------------------|--------------------------|-------------------------|
| 1/2 | FS-1-50 | FS-1-50A |
| 3/4 | FS-1-75 | FS-1-75A |
| 1 | FS-1-100 | |
| 1/2 | FD-1-50 | FD-1-50A |
| 3/4 | FD-1-75 | FD-1-75A |
| 1 | FD-1-100 | |
| 1/2 | FSC-1-50 | FSC-1-50A |
| 3/4 | FSC-1-75 | FSC-1-75A |
| 1 | FSC-1-100 | |
| 1/2 | FDC-1-50 | FDC-1-50A |
| 3/4 | FDC-1-75 | FDC-1-75A |
| 1 | FDC-1-100 | |
| 1/2 | FSL-1-50 | |
| 3/4 | FSL-1-75 | |
| 1/2 | FDL-1-50 | |
| 3/4 | FDL-1-75 | |
| 1/2 | FSR-1-50 | |
| 3/4 | FSR-1-75 | |
| 1/2 | FDR-1-50 | |
| 3/4 | FDR-1-75 | |
| 1/2 | FSS-1-50 | FSS-1-50A |
| 3/4 | FSS-1-75 | FSS-1-75A |
| 1/2 | FSA-1-50 | |
| 3/4 | FSA-1-75 | |
| 1/2 | FDA-1-50 | |
| 3/4 | FDA-1-75 | |

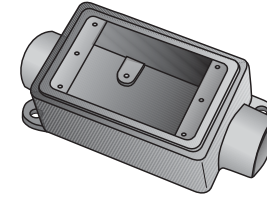
UL Standard: 514A
CSA Standard: C22.2 No. 18
Fed Spec: A-A-50563
NEMA: FB-1

Suggested Specifications:

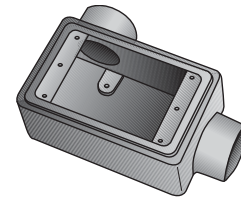
Where cast device boxes are required for mounting wiring devices or splicing, taps or pulling conductors, they are zinc electroplated gray iron with aluminum enamel or copper-free aluminum. They are UL Listed and CSA Certified for wet locations when used with gasketed covers.



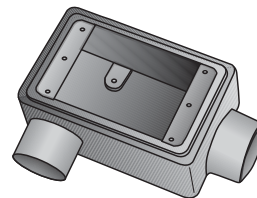
Type FS & FD
Single Gang with mounting feet



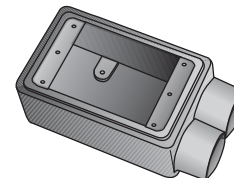
Type FSC & FDC
Single Gang with mounting feet



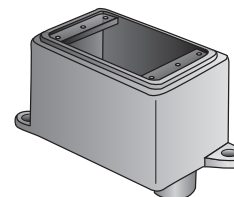
Type FSL & FDL
Single Gang without mounting feet



Type FSR & FDR
Single Gang without mounting feet



Type FSS
Single Gang without mounting feet



Type FSA & FDA
Single Gang with mounting feet