

# Hex Reducing Bushings & Bushed Conduit Nipples

Threaded for Rigid Conduit & IMC

## Type 300R

Provided with hex shoulder

### Use:

To reduce a threaded conduit entry into a smaller trade size.

### Material/Finish:

Malleable Iron/Zinc Electroplated

### Third Party Certification:



UL Listed: E-11853



CSA Certified: 009795

### Applicable Third Party Standards:

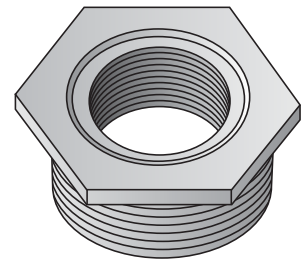
UL Standard: 514B

CSA Standard: C22.2 No. 18

Fed. Spec: W-F-408E

NEMA: FB-1

Trade Size (inches)	Catalog Number	Dimensions in Inches		
		Max. Dim. Across Corners	Thread Length	Flange Thickness
1/2 - 3/8	320-R	1 1/8	1/2	3/32
3/4 - 1/2	321-R	1 1/16	5/8	3/16
1 - 3/4	322-R	1 5/8	3/4	3/16
1 - 1/2	323-R	1 5/8	1 1/16	5/32
1 1/4 - 1/2	324-R	1 15/16	3/4	3/16
1 1/4 - 3/4	325-R	1 15/16	3/4	3/16
1 1/4 - 1	326-R	1 15/16	3/4	3/16
1 1/2 - 1 1/4	327-R	2 3/8	15/16	3/16
1 1/2 - 1	328-R	2 3/8	15/16	3/16
1 1/2 - 3/4	329-R	2 3/8	15/16	3/16
1 1/2 - 1/2	330-R	2 3/8	15/16	3/16
2 - 1 1/2	331-R	2 3/4	15/16	3/16
2 - 1 1/4	332-R	2 3/4	15/16	3/16
2 - 1	333-R	2 3/4	15/16	3/16
2 - 3/4	334-R	2 3/4	15/16	3/16
2 - 1/2	335-R	2 3/4	15/16	3/16
2 1/2 - 2	336-R	3 1/4	15/16	7/16
2 1/2 - 1 1/2	337-R	3 1/4	15/16	7/16
2 1/2 - 1	339-R	3 1/4	15/16	7/16
3 - 1 1/2	340-R	3 15/16	1 1/16	1/2
3 - 2	341-R	3 15/16	1 1/8	1/2
3 - 2 1/2	342-R	3 15/16	1 1/16	1/2
3 1/2 - 3	349-R	4 7/16	1 1/2	1/2
3 1/2 - 2 1/2	350-R	4 7/16	1 1/2	1/2
4 - 2 1/2	355-R	5 1/8	1 7/16	1/2
4 - 3	356-R	5 3/8	1 1/4	1/2
4 - 3 1/2	357-R	5 3/8	1 1/4	1/2



Type 300R

## Type 7

### Bushed Conduit Nipples

#### Use:

Use through knockout to connect box to conduit coupling. Use with a locknut to connect two boxes side by side or back to back. Use with a locknut to connect fixture housings in continuous runs.

#### Features:

- Available with Insulated Throat.
- With rigid conduit threads (NPS)

#### Material/Finish:

Malleable Iron/Zinc Electroplated

#### Optional Finish:

For additional corrosion protection, specify Mechanically Galvanized  
Contact your local representative for pricing and availability.

#### Third Party Certification:



UL Listed: E-11853



CSA Certified: 009795

Trade Size (inches)	Catalog Number	Insulated Throat Catalog Number	Dimensions in Inches		
			Max. Dia. Across Corners	Thread Length	Flange Thickness
3/8	7-38	---	7/8	1/2	1/8
1/2	7-50	7-50T	1 1/8	1/2	3/16
3/4	7-75	7-75T	1 1/4	3/8	3/16
1	7-100	7-100T	1 3/4	5/8	1/4
1 1/4	7-125	7-125T	2 1/8	7/8	1/4
1 1/2	7-150	7-150T	2 1/2	1	5/16
2	7-200	7-200T	3	1 1/8	3/16
2 1/2	7-250	7-250T	3 3/8	1 1/4	3/8
3	7-300	7-300T	4 1/2	1 1/4	3/8
3 1/2	7-350	7-350T	5 1/8	1 3/8	3/8
4	7-400*	7-400T*	5 1/4	1 1/4	7/16
5	7-500*	7-500T*	6 3/8	1 1/4	1/2
6	7-600*	7-600T*	7 3/8	1 3/8	1/2

\*Not CSA Certified

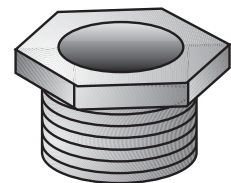
#### Applicable Third Party Standards:

UL Standard: 514B

CSA Standard: C22.2 No. 18

Fed. Spec./CID: A-A-50553

ANSI/NEMA: FB-1



Type 7