

Cable Connectors

For Armored Cable, Flexible Metal Conduit, Interlocked Metal Clad Cables, NM & SE Cable

Type KC

2-Screw & 4-Screw Clamp Connectors

Use:

- To ground and secure Armored Cable, Flexible Metal Conduit and Interlocked Metal Clad Cables to boxes and enclosures.
- To secure NM and SE Cables to boxes and enclosures.


Features:


- Available with insulated throats.
- Male hub threads - NPS.
- All center stopped.
- Provided with locknuts.

Material/Finish:

Malleable Iron/Zinc Electroplated

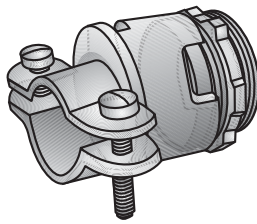
Third Party Certification:

 UL Listed :E-11852, E-11858, E-11856, E-11853

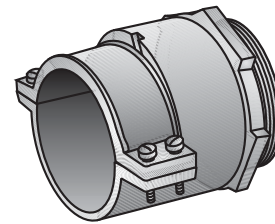
 CSA Certified: 9795

Applicable Third Party Standards:

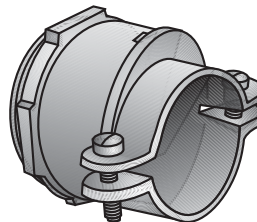
UL Standard: 514B
 CSA Standard C22.2 No. 18
 Fed. Spec: W-F-406E
 NEMA: FB-1



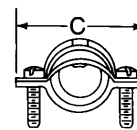
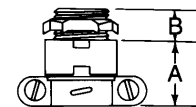
Type KC-50 — Type KC-76



Type KC-350 — Type KC-500



Type KC-100 — Type KC-300



Trade Size (inches)	Catalog Number	Insulated Throat Catalog Number	UL FILE NUMBER					Dimensions in Inches			Flex Opening Min. - Max.
			Metal Clad	Armored Cable	Flex. Metal Conduit	Sheathed Cable	SE Cable	A	B	C	
1/2	KC-50	KC-50T	E-11852	E-11852	E-11852	E-11852	E-11852	1 1/8	7/16	1 7/8	1/2 - 29/32
	KC-51		E-11852	E-11852	E-11852	E-11852	E-11852	1 1/8	7/16	1 7/8	1/2 - 19/16
3/4	KC-75	KC-75T		E-11852	E-11852	E-11852	E-11852	1 3/16	1/2	2 1/8	7/8 - 1 3/32
	KC-76			E-11852	E-11852	E-11852	E-11858 E-11852	1 3/16	1/2	2 1/8	27/32 - 1 3/32
1	KC-100	KC-100T			E-11853	E-11856	E-11858	1 1/4	9/16	2 7/16	1 1/16 - 1 3/8
	KC-125	KC-125T			E-11853	E-11856	E-11858	1 5/16	9/16	2 13/16	1 9/32 - 1 5/8
1 1/2	KC-150	KC-150T			E-11853			1 13/16	3/4	3 7/16	1 3/8 - 2
2	KC-200	KC-200T			E-11853	E-11856	E-11858	2 1/8	7/8	4 1/4	2 1/8 - 2 1/2
	KC-250	KC-250T			E-11853	E-11856	E-11858	2 5/8	7/8	5	2 7/16 - 3
3	KC-300	KC-300T			E-11853			3 1/16	1 1/16	5 1/2	2 15/16 - 3 1/2
3 1/2	KC-350	KC-350T			E-11853			3 9/16	1 1/4	6 1/2	3 23/32 - 4
	KC-400	KC-400T			E-11853			3 11/16	1 1/4	7	4 1/16 - 4 7/16
5	KC-500	KC-500T						5	1 1/2	8 3/8	5 7/16 - 5 1/2

UL & CSA Listing not applicable.