

EMT Malleable Iron Straps and Spacers

Type 15-G

One Hole

Material:
Malleable Iron

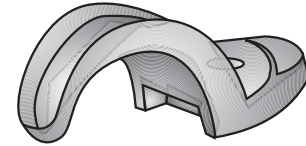
Finish:
Hot Dip Galvanized

Third Party Certification:
 CSA Certified: 9795

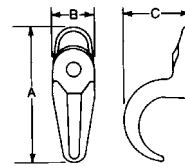
Applicable Third Party Standards:
CSA Standard: C22.2 No. 18

| Trade Size (inches) | Catalog Number | Dimensions in Inches | | | Bolt Size |
|---------------------|----------------|---------------------------------|----------------------------------|---------------------------------|-----------|
| | | A | B | C | |
| 1/2 | 15-50G | 1 ¹⁵ / ₁₆ | 3/4 | 7/8 | 1/4 |
| 3/4 | 15-75G | 2 ⁷ / ₃₂ | 23 ³² / ₃₂ | 1 ¹ / ₈ | 1/4 |
| 1 | 15-100G | 2 ⁷ / ₃₂ | 3/4 | 1 ¹¹ / ₃₂ | 1/4 |
| 1 1/4 | 15-125G | 2 ¹⁹ / ₃₂ | 25 ³² / ₃₂ | 1 ¹¹ / ₃₂ | 5/16 |
| 1 1/2 | 15-150G | 3 ¹ / ₄ | 7/8 | 1 ¹⁵ / ₁₆ | 3/8 |
| 2 | 15-200G | 3 ²⁵ / ₃₂ | 1 | 2 ⁷ / ₁₆ | 7/16 |
| 2 1/2 | 14-250G* | 5 ¹⁵ / ₁₆ | 1 ³ / ₈ | 3 ¹ / ₁₆ | 1/2 |
| 3 | 14-300G* | 7 ⁷ / ₁₆ | 1 ⁵ / ₈ | 3 ¹³ / ₁₆ | 1/2 |
| 3 1/2 | 14-350G* | 8 ³ / ₁₆ | 1 ¹³ / ₁₆ | 4 ³ / ₈ | 5/8 |
| 4 | 14-400G* | 8 ¹¹ / ₁₆ | 2 | 5 | 5/8 |

*Suitable for use with rigid conduit or IMC.



Type 15-G



Note:
For rigid conduit & IMC straps see Page EA15.

Conduit Spacers

Material:
Malleable Iron or Cast Iron

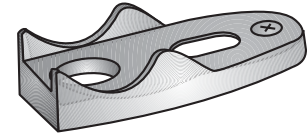
Finish:
Mechanically Galvanized or Hot Dip Galvanized

Third Party Certification:
 CSA Certified: 9795

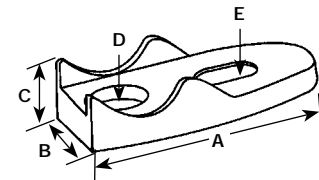
Applicable Third Party Standards:
CSA Standard: C22.2 No. 18

| Trade Size (Inches) | Catalog Number | Dimensions in Inches | | | | |
|---------------------|----------------|----------------------------------|---------------------------------|----------------------------------|----------------------------------|---|
| | | A | B | C | D | E |
| 1/2 | 141G | 1 ¹³ / ₃₂ | 1 ¹ / ₈ | 7/16 | 3/8 | 3/8 X 9/16 |
| 3/4 | 142G | 2 ¹ / ₂ | 1 ¹ / ₈ | 1/2 | 3/8 | 7/16 X 9/16 |
| 1 | 143G | 3 ³ / ₁₆ | 1 ⁷ / ₃₂ | 9/16 | 3/8 | 7/16 X 3/4 |
| 1 1/4 | 144G | 3 ¹¹ / ₁₆ | 1 ¹³ / ₃₂ | 45 ⁶⁴ / ₆₄ | 1/2 | 1/2 X 3/4 |
| 1 1/2 | 145G | 3 ¹⁵ / ₁₆ | 1 ⁹ / ₁₆ | 13 ¹⁶ / ₁₆ | 9/16 | 35 ⁶⁴ / ₆₄ X 15 ¹⁶ / ₁₆ |
| 2 | 146G | 5 ¹ / ₈ | 2 | 3/4 | 9/16 | 5/8 X 1 |
| 2 1/2 | 147G | 5 ³ / ₄ | 2 ¹⁵ / ₃₂ | 3/4 | 15 ³² / ₃₂ | 5/8 X 1 1/8 |
| 3 | 148G | 7 ¹ / ₈ | 2 ¹³ / ₁₆ | 13 ¹⁶ / ₁₆ | 15 ³² / ₃₂ | 5/8 X 1 1/8 |
| 3 1/2 | 149G | 8 | 3 ⁷ / ₃₂ | 3 ¹ / ₃₂ | 15 ³² / ₃₂ | 11 ¹⁶ / ₁₆ X 1 11 ³² / ₃₂ |
| 4 | 150G | 8 ³ / ₄ | 3 ¹³ / ₃₂ | 3 ¹ / ₃₂ | 15 ³² / ₃₂ | 23 ³² / ₃₂ X 1 9 ³² / ₃₂ |
| 5 | 151G | 10 | 3 ²³ / ₃₂ | 1 ¹³ / ₆₄ | 1/2 | 23 ³² / ₃₂ X 1 9 ³² / ₃₂ |
| 6 | 152G | 11 ¹³ / ₁₆ | 3 ¹⁵ / ₁₆ | 1 1/2 | 1/2 | 1 1/4 X 2 |

*Cast Iron



Type 141G



Nest Backs

Use:
Supplementary spacer for use with malleable iron pipe straps and clamp back.

Features:
• Spacer fits snugly under clamp back and makes possible additional spacing away from the mounting surface. Units fit securely into each other so that conduit can be installed at any desired distance from walls or ceilings.

Materials:
Malleable Iron or Cast Iron

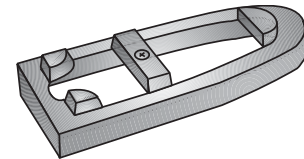
Finish:
Mechanically Galvanized or Hot Dip Galvanized

Third Party Certification:
 CSA Certified: 009795

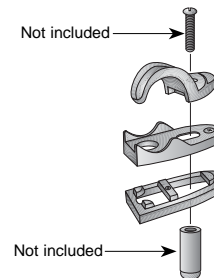
Applicable Third Party Standards:
CSA Standard: C22.2 No. 18

| Trade Size (inches) | Catalog Number | Dimensions in Inches | | |
|---------------------|----------------|---------------------------------|---------------------------------|-----------|
| | | Length | Width | Thickness |
| 1/2 | 141-NG | 2 1/2 | 1 1/16 | 1/4 |
| 3/4 | 142-NG | 2 1/2 | 1 1/8 | 1/4 |
| 1 | 143-NG | 3 3/16 | 1 7/16 | 1/4 |
| 1 1/4 | 144-NG | 3 3/4 | 1 1/4 | 1/4 |
| 1 1/2 | 145-NG | 3 ¹⁵ / ₁₆ | 1 ⁹ / ₁₆ | 1/4 |
| 2 | 146-NG | 5 ⁵ / ₁₆ | 2 ³ / ₁₆ | 1/4 |
| 2 1/2 | 147-NG | 5 ¹³ / ₁₆ | 2 ⁹ / ₁₆ | 3/8 |
| 3 | *148-NG | 7 ³ / ₁₆ | 2 ¹³ / ₁₆ | 3/8 |
| 3 1/2 | *149-NG | 8 | 3 1/4 | 3/8 |
| 4 | 150-NG | 8 3/4 | 3 7/16 | 3/8 |

*Cast Iron



Type 141-NG



Typical Installation